

## Product datasheet

# Anti-PAQR8 antibody ab46535

[4 References](#) [2 Images](#)

### Overview

---

<b>Product name</b>	Anti-PAQR8 antibody
<b>Description</b>	Rabbit polyclonal to PAQR8
<b>Host species</b>	Rabbit
<b>Tested applications</b>	<b>Suitable for:</b> ICC/IF
<b>Species reactivity</b>	<b>Reacts with:</b> Mouse
<b>Immunogen</b>	Synthetic peptide corresponding to PAQR8 (extracellular) conjugated to keyhole limpet haemocyanin.
<b>Positive control</b>	ICC/IF: p19 cells, NS-1 cells
<b>General notes</b>	<p>The Life Science industry has been in the grips of a reproducibility crisis for a number of years. Abcam is leading the way in addressing this with our range of recombinant monoclonal antibodies and knockout edited cell lines for gold-standard validation. Please check that this product meets your needs before purchasing.</p> <p>If you have any questions, special requirements or concerns, please send us an inquiry and/or contact our Support team ahead of purchase. Recommended alternatives for this product can be found below, along with publications, customer reviews and Q&amp;As</p>

### Properties

---

<b>Form</b>	Liquid
<b>Storage instructions</b>	Shipped at 4°C. Upon delivery aliquot and store at -20°C. Avoid freeze / thaw cycles.
<b>Storage buffer</b>	Preservative: 0.05% Sodium azide Constituent: Whole serum
<b>Purity</b>	Whole antiserum
<b>Clonality</b>	Polyclonal
<b>Isotype</b>	IgG

### Applications

---

**The Abpromise guarantee** Our **Abpromise guarantee** covers the use of ab46535 in the following tested applications. The application notes include recommended starting dilutions; optimal dilutions/concentrations should be determined by the end user.

Application	Abreviews	Notes
ICC/IF		Use at an assay dependent concentration.

## Target

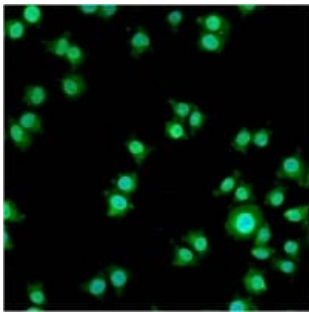
### Relevance

MPRb (Membrane progesterin receptor beta) is a steroid membrane receptor and binds progesterone. MPRb may be involved in oocyte maturation. MPRb is an integral membrane protein and is expressed in brain and testis. It belongs to the ADIPOR family.

### Cellular localization

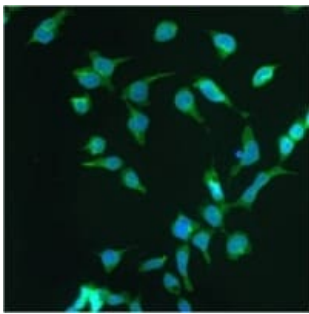
Cell Membrane. Multi-pass membrane protein. Note: Colocalizes with a lysosomal protein cathepsin D.

## Images



Immunofluorescent analysis of Progesterin Receptor Beta using anti-Progesterin Receptor Beta polyclonal antibody (ab46535) shows staining in NS-1 Cells.

Immunocytochemistry/ Immunofluorescence - Anti-PAQR8 antibody (ab46535)



Immunofluorescent analysis of PAQR8 using anti-PAQR8 polyclonal antibody (ab46535) shows staining in p19 Cells.

Immunocytochemistry/ Immunofluorescence - Anti-PAQR8 antibody (ab46535)

**Please note:** All products are "FOR RESEARCH USE ONLY. NOT FOR USE IN DIAGNOSTIC PROCEDURES"

## Our Abpromise to you: Quality guaranteed and expert technical support

- Replacement or refund for products not performing as stated on the datasheet

- Valid for 12 months from date of delivery
- Response to your inquiry within 24 hours
  
- We provide support in Chinese, English, French, German, Japanese and Spanish
- Extensive multi-media technical resources to help you
- We investigate all quality concerns to ensure our products perform to the highest standards

If the product does not perform as described on this datasheet, we will offer a refund or replacement. For full details of the Abpromise, please visit <https://www.abcam.com/abpromise> or contact our technical team.

### **Terms and conditions**

---

- Guarantee only valid for products bought direct from Abcam or one of our authorized distributors