

### Anti-PAR2 antibody ab124227

★★★★★ [1 Abreviews](#) [3 References](#) [2 Images](#)

#### Overview

<b>Product name</b>	Anti-PAR2 antibody
<b>Description</b>	Rabbit polyclonal to PAR2
<b>Host species</b>	Rabbit
<b>Tested applications</b>	<b>Suitable for:</b> IHC-P
<b>Species reactivity</b>	<b>Reacts with:</b> Rat
<b>Immunogen</b>	Synthetic peptide within Human PAR2 aa 300-370 conjugated to keyhole limpet haemocyanin. The exact sequence is proprietary. The immunogen is directed against a cytoplasmic region of PAR2.

#### General notes

The Life Science industry has been in the grips of a reproducibility crisis for a number of years. Abcam is leading the way in addressing this with our range of recombinant monoclonal antibodies and knockout edited cell lines for gold-standard validation. Please check that this product meets your needs before purchasing.

If you have any questions, special requirements or concerns, please send us an inquiry and/or contact our Support team ahead of purchase. Recommended alternatives for this product can be found below, along with publications, customer reviews and Q&As

#### Properties

<b>Form</b>	Liquid
<b>Storage instructions</b>	Shipped at 4°C. Upon delivery aliquot and store at -20°C. Avoid freeze / thaw cycles.
<b>Storage buffer</b>	Contains antibody stabilization buffer.
<b>Purity</b>	Immunogen affinity purified
<b>Purification notes</b>	<b>ab123227</b> is purified on an antigen-based affinity column.
<b>Clonality</b>	Polyclonal
<b>Isotype</b>	IgG

#### Applications

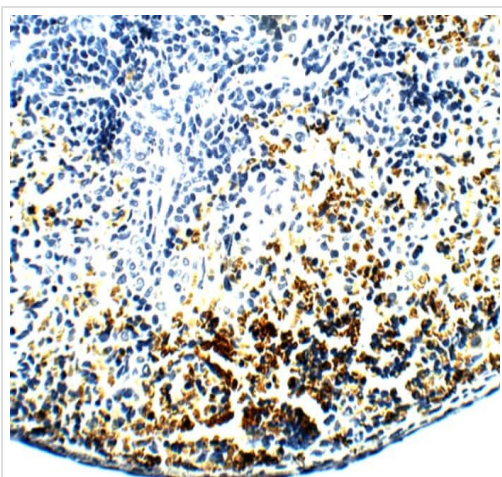
**The Abpromise guarantee** Our **Abpromise guarantee** covers the use of ab124227 in the following tested applications. The application notes include recommended starting dilutions; optimal dilutions/concentrations should be determined by the end user.

Application	Abreviews	Notes
IHC-P	★★★★★ (1)	1/100.

## Target

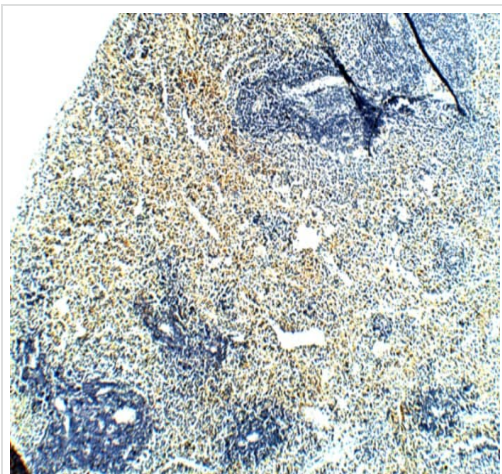
<b>Function</b>	Receptor for trypsin and trypsin-like enzymes coupled to G proteins that stimulate phosphoinositide hydrolysis. May have a role in the regulation of vascular tone.
<b>Tissue specificity</b>	Widely expressed in tissues with especially high levels in pancreas, liver, kidney, small intestine, and colon. Moderate expression is detected in many organs, but none in brain or skeletal muscle.
<b>Sequence similarities</b>	Belongs to the G-protein coupled receptor 1 family.
<b>Post-translational modifications</b>	A proteolytic cleavage generates a new N-terminus that functions as a tethered ligand.
<b>Cellular localization</b>	Cell membrane.

## Images



Immunohistochemistry (Formalin/PFA-fixed paraffin-embedded sections) analysis of rat spleen tissue labelling PAR2 with ab124227 at 1/100 dilution. Counterstained with hematoxylin. 40X magnification.

Immunohistochemistry (Formalin/PFA-fixed paraffin-embedded sections) - Anti-PAR2 antibody (ab124227)



Immunohistochemistry (Formalin/PFA-fixed paraffin-embedded sections) analysis of rat spleen tissue labelling PAR2 with ab124227 at 1/100 dilution. Counterstained with hematoxylin. 5X magnification.

Immunohistochemistry (Formalin/PFA-fixed paraffin-embedded sections) - Anti-PAR2 antibody (ab124227)

**Please note:** All products are "FOR RESEARCH USE ONLY. NOT FOR USE IN DIAGNOSTIC PROCEDURES"

### Our Abpromise to you: Quality guaranteed and expert technical support

---

- Replacement or refund for products not performing as stated on the datasheet
- Valid for 12 months from date of delivery
- Response to your inquiry within 24 hours
- We provide support in Chinese, English, French, German, Japanese and Spanish
- Extensive multi-media technical resources to help you
- We investigate all quality concerns to ensure our products perform to the highest standards

If the product does not perform as described on this datasheet, we will offer a refund or replacement. For full details of the Abpromise, please visit <https://www.abcam.com/abpromise> or contact our technical team.

### Terms and conditions

---

- Guarantee only valid for products bought direct from Abcam or one of our authorized distributors