


## Product datasheet

### Anti-PARM-1 antibody [EPR10009] $\alpha$ b168369

Recombinant RabMAb

[1 References](#) [4 Images](#)

#### Overview

Product name	Anti-PARM-1 antibody [EPR10009]
Description	Rabbit monoclonal [EPR10009] to PARM-1
Host species	Rabbit
Tested applications	<b>Suitable for:</b> Flow Cyt (Intra), WB, IP <b>Unsuitable for:</b> ICC/IF or IHC-P
Species reactivity	<b>Reacts with:</b> Human <b>Predicted to work with:</b> Mouse, Rat 
Immunogen	Synthetic peptide corresponding to Human PARM-1.
Positive control	Human placenta, fetal kidney, fetal heart, and 293T lysates; permeabilized 293 cells; 293 cell lysate.
General notes	<p>This product is a recombinant monoclonal antibody, which offers several advantages including:</p> <ul style="list-style-type: none"> <li>- High batch-to-batch consistency and reproducibility</li> <li>- Improved sensitivity and specificity</li> <li>- Long-term security of supply</li> <li>- Animal-free production</li> </ul> <p>For more information <a href="#">see here</a>.</p> <p>Our RabMAb<sup>®</sup> technology is a patented hybridoma-based technology for making rabbit monoclonal antibodies. For details on our patents, please refer to <a href="#">RabMAb<sup>®</sup> patents</a>.</p>

#### Properties

Form	Liquid
Storage instructions	Shipped at 4°C. Store at +4°C short term (1-2 weeks). Upon delivery aliquot. Store at -20°C long term.
Storage buffer	pH: 7.2 Preservative: 0.01% Sodium azide Constituents: 9% PBS, 40% Glycerol (glycerin, glycerine), 0.05% BSA, 50% Tissue culture supernatant
Purity	Protein A purified
Clonality	Monoclonal

Clone number                      EPR10009  
Isotype                                IgG

## Applications

**The Abpromise guarantee**            Our **Abpromise guarantee** covers the use of ab168369 in the following tested applications.  
The application notes include recommended starting dilutions; optimal dilutions/concentrations should be determined by the end user.

Application	Abreviews	Notes
Flow Cyt (Intra)		1/10 - 1/100. <b>ab172730</b> - Rabbit monoclonal IgG, is suitable for use as an isotype control with this antibody.
WB		1/1000 - 1/10000. Predicted molecular weight: 32 kDa.
IP		1/100 - 1/500.

**Application notes**                      Is unsuitable for ICC/IF or IHC-P.

## Target

**Function**                                      May regulate TLP1 expression and telomerase activity, thus enabling certain prostatic cells to resist apoptosis.

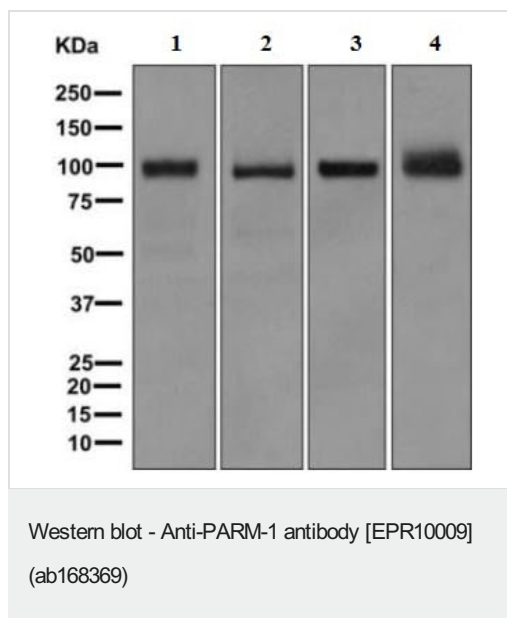
**Tissue specificity**                              Widely expressed with highest levels in heart, kidney and placenta.

**Sequence similarities**                              Belongs to the PARM family.

**Post-translational modifications**                              Highly N-glycosylated and O-glycosylated.

**Cellular localization**                              Cell membrane. Golgi apparatus membrane. Endosome membrane.

## Images



**All lanes :** Anti-PARM-1 antibody [EPR10009] (ab168369) at 1/1000 dilution

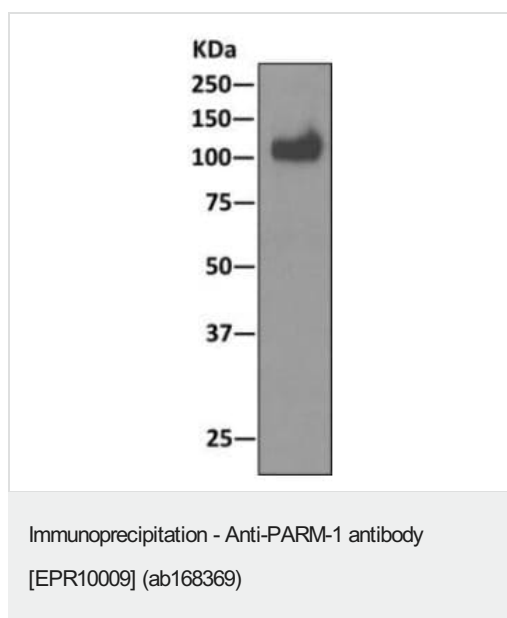
**Lane 1 :** Human placenta lysate

**Lanes 2-3 :** Fetal kidney tissue lysate

**Lane 4 :** 293T (Human embryonic kidney epithelial cell) cell lysate

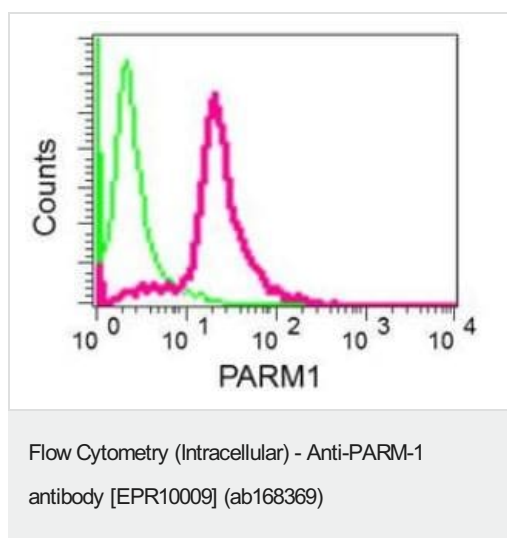
Lysates/proteins at 10 µg per lane.

**Predicted band size:** 32 kDa



Western blot analysis on pellet from 293 cell lysate

immunoprecipitated using ab168369 at a 1/100 dilution, and HRP-conjugated anti-rabbit IgG.



Intracellular flow cytometric analysis of permeabilized 293 cells

using ab168369 at a 1/10 dilution (red) or a rabbit IgG (negative) (green).

### Why choose a recombinant antibody?



**Research with confidence**  
Consistent and reproducible results



**Long-term and scalable supply**  
Recombinant technology



**Success from the first experiment**  
Confirmed specificity



**Ethical standards compliant**  
Animal-free production

Anti-PARM-1 antibody [EPR10009] (ab168369)

**Please note:** All products are "FOR RESEARCH USE ONLY. NOT FOR USE IN DIAGNOSTIC PROCEDURES"

### Our Abpromise to you: Quality guaranteed and expert technical support

---

- Replacement or refund for products not performing as stated on the datasheet
- Valid for 12 months from date of delivery
- Response to your inquiry within 24 hours
- We provide support in Chinese, English, French, German, Japanese and Spanish
- Extensive multi-media technical resources to help you
- We investigate all quality concerns to ensure our products perform to the highest standards

If the product does not perform as described on this datasheet, we will offer a refund or replacement. For full details of the Abpromise, please visit <https://www.abcam.com/abpromise> or contact our technical team.

### Terms and conditions

---

- Guarantee only valid for products bought direct from Abcam or one of our authorized distributors