


## Product datasheet

# Anti-Pat1b antibody ab124257

[2 References](#) [2 Images](#)

### Overview

---

|                            |   |
|----------------------------|---|
| <b>Product name</b>        | Anti-Pat1b antibody   |
| <b>Description</b>         | Rabbit polyclonal to Pat1b  |
| <b>Host species</b>        | Rabbit  |
| <b>Tested applications</b> | <b>Suitable for:</b> WB, IP   |
| <b>Species reactivity</b>  | <b>Reacts with:</b> Human<br><b>Predicted to work with:</b> Mouse, Rabbit, Chimpanzee, Rhesus monkey, Gorilla, Chinese hamster, Orangutan    |
| <b>Immunogen</b>           | Synthetic peptide corresponding to Human Pat1b aa 425-475.<br>Database link: <a href="#">NP_689929.2</a>  |
| <b>Positive control</b>    | HeLa, 293T and Jurkat whole cell lysate ( <a href="#">ab7899</a> )  |
| <b>General notes</b>       | <p>The Life Science industry has been in the grips of a reproducibility crisis for a number of years. Abcam is leading the way in addressing this with our range of recombinant monoclonal antibodies and knockout edited cell lines for gold-standard validation. Please check that this product meets your needs before purchasing.</p> <p>If you have any questions, special requirements or concerns, please send us an inquiry and/or contact our Support team ahead of purchase. Recommended alternatives for this product can be found below, along with publications, customer reviews and Q&amp;As</p> |

### Properties

---

|                             |   |
|-----------------------------|---|
| <b>Form</b>                 | Liquid  |
| <b>Storage instructions</b> | Shipped at 4°C. Upon delivery aliquot and store at -20°C. Avoid freeze / thaw cycles.                 |
| <b>Storage buffer</b>       | pH: 7<br>Preservative: 0.09% Sodium azide<br>Constituent: 99% Tris citrate/phosphate<br><br>pH 7 to 8 |
| <b>Purity</b>               | Immunogen affinity purified   |
| <b>Clonality</b>            | Polyclonal  |
| <b>Isotype</b>              | IgG   |

## Applications

### The Abpromise guarantee

Our **Abpromise guarantee** covers the use of ab124257 in the following tested applications.

The application notes include recommended starting dilutions; optimal dilutions/concentrations should be determined by the end user.

| Application | Abreviews | Notes  |
|-------------|-----------|--|
| WB          |           | 1/2000 - 1/10000. Predicted molecular weight: 1 kDa. |
| IP          |           | Use at 2-10 µg/mg of lysate.                         |

## Target

### Function

RNA-binding protein involved in deadenylation-dependent decapping of mRNAs, leading to the degradation of mRNAs. Acts as a scaffold protein that connects deadenylation and decapping machinery. Required for cytoplasmic mRNA processing body (P-body) assembly. In case of infection, required for translation and replication of hepatitis C virus (HCV).

### Tissue specificity

Ubiquitous.

### Sequence similarities

Belongs to the PAT1 family.

### Domain

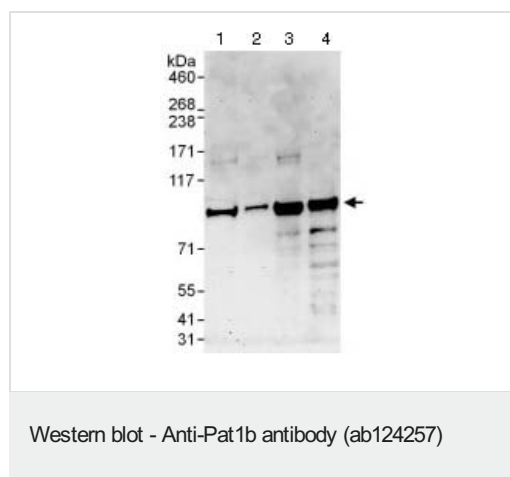
The region A, also named N-term, mediates the interaction with DDX6/RCK and is required for cytoplasmic mRNA processing body assembly.

The region C, also named Pat-C, is required for RNA-binding and mediates the binding with the Lsm-containing SMN-Sm protein complex and the decapping machinery. It folds into an alpha-alpha superhelix, exposing conserved and basic residues on one side of the domain.

### Cellular localization

Cytoplasm > P-body.

## Images



**All lanes :** Anti-Pat1b antibody (ab124257) at 0.1 µg/ml

**Lane 1 :** HeLa whole cell lysate at 50 µg

**Lane 2 :** HeLa whole cell lysate at 15 µg

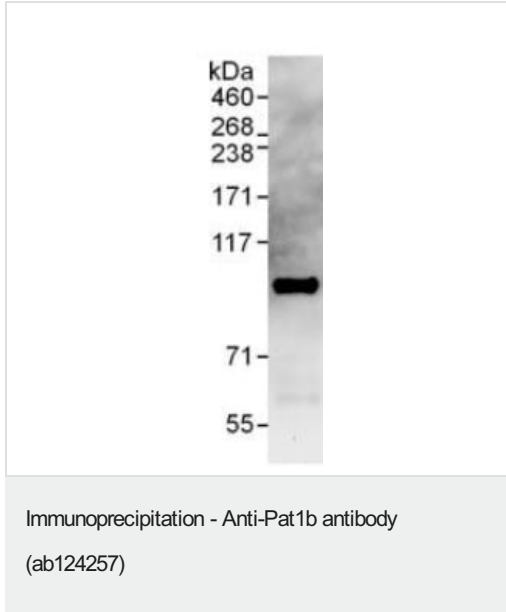
**Lane 3 :** 293T whole cell lysate at 50 µg

**Lane 4 :** Jurkat whole cell lysate at 50 µg

Developed using the ECL technique.

**Predicted band size:** 1 kDa

**Exposure time:** 3 minutes



ab124257 at 1  $\mu\text{g/ml}$  staining Pat1b in HeLa whole cell lysate immunoprecipitated using ab124257 at 6  $\mu\text{g/mg}$  lysate (1 mg/IP; 20% of IP loaded/lane). Detection: Chemiluminescence with exposure time of 30 seconds.

**Please note:** All products are "FOR RESEARCH USE ONLY. NOT FOR USE IN DIAGNOSTIC PROCEDURES"

### Our Abpromise to you: Quality guaranteed and expert technical support

---

- Replacement or refund for products not performing as stated on the datasheet
- Valid for 12 months from date of delivery
- Response to your inquiry within 24 hours
- We provide support in Chinese, English, French, German, Japanese and Spanish
- Extensive multi-media technical resources to help you
- We investigate all quality concerns to ensure our products perform to the highest standards

If the product does not perform as described on this datasheet, we will offer a refund or replacement. For full details of the Abpromise, please visit <https://www.abcam.com/abpromise> or contact our technical team.

### Terms and conditions

---

- Guarantee only valid for products bought direct from Abcam or one of our authorized distributors