

Anti-Paxillin (phospho S83) antibody ab31833

[1 Image](#)

Overview

Product name	Anti-Paxillin (phospho S83) antibody
Description	Rabbit polyclonal to Paxillin (phospho S83)
Host species	Rabbit
Specificity	ab31833 detects a 68kDa protein corresponding to the molecular mass of phosphorylated paxillin.
Tested applications	Suitable for: WB
Species reactivity	Reacts with: Mouse
Immunogen	Synthetic peptide corresponding to Mouse Paxillin (phospho S83) conjugated to keyhole limpet haemocyanin.
General notes	<p>The Life Science industry has been in the grips of a reproducibility crisis for a number of years. Abcam is leading the way in addressing this with our range of recombinant monoclonal antibodies and knockout edited cell lines for gold-standard validation. Please check that this product meets your needs before purchasing.</p> <p>If you have any questions, special requirements or concerns, please send us an inquiry and/or contact our Support team ahead of purchase. Recommended alternatives for this product can be found below, along with publications, customer reviews and Q&As</p>

Properties

Form	Liquid
Storage instructions	Shipped at 4°C. Upon delivery aliquot and store at -20°C. Avoid freeze / thaw cycles.
Storage buffer	Preservative: 0.05% Sodium azide Constituents: PBS, 50% Glycerol, 0.1% BSA
Purity	Immunogen affinity purified
Clonality	Polyclonal
Isotype	IgG

Applications

The Abpromise guarantee Our **Abpromise guarantee** covers the use of ab31833 in the following tested applications.

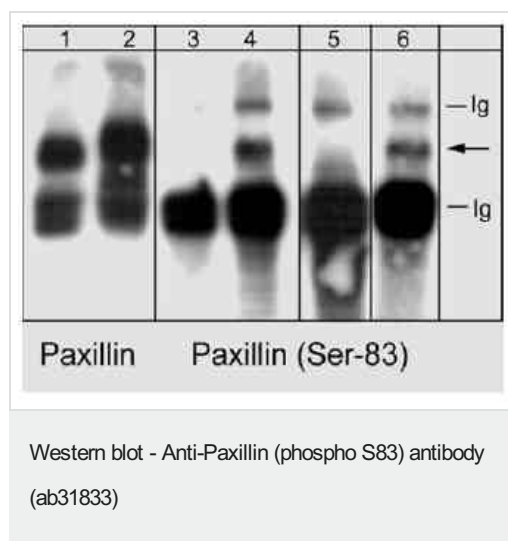
The application notes include recommended starting dilutions; optimal dilutions/concentrations should be determined by the end user.

Application	Abreviews	Notes
WB		1/1000. Predicted molecular weight: 68 kDa. In 5% non-fat milk, PBS, 0.04% Tween20 for 1 hour at room temperature.

Target

Function	Cytoskeletal protein involved in actin-membrane attachment at sites of cell adhesion to the extracellular matrix (focal adhesion).
Sequence similarities	Belongs to the paxillin family. Contains 4 LIM zinc-binding domains.
Post-translational modifications	Phosphorylated on tyrosine residues during integrin-mediated cell adhesion, embryonic development, fibroblast transformation and following stimulation of cells by mitogens.
Cellular localization	Cytoplasm > cytoskeleton. Cell junction > focal adhesion.

Images



Western blot analysis of immunoprecipitated paxillin (arrow) in mouse macrophages untreated (lanes 1 & 3) or treated with calyculin A (100 nM) for 30 min (lanes 2, 4, 5, & 6). Lysates were immunoprecipitated with anti-Paxillin. The blots were probed with anti-Paxillin or anti-phospho-Paxillin (Ser-83). The latter was used in the presence of phospho-Paxillin (Ser-83) peptide (lane 5) or phospho-Paxillin (Ser-85) peptide (lane 6). Immunoglobulin (Ig) chains from the immunoprecipitation were observed above and below the paxillin bands.

Please note: All products are "FOR RESEARCH USE ONLY. NOT FOR USE IN DIAGNOSTIC PROCEDURES"

Our Abpromise to you: Quality guaranteed and expert technical support

- Replacement or refund for products not performing as stated on the datasheet
- Valid for 12 months from date of delivery
- Response to your inquiry within 24 hours
- We provide support in Chinese, English, French, German, Japanese and Spanish
- Extensive multi-media technical resources to help you
- We investigate all quality concerns to ensure our products perform to the highest standards

If the product does not perform as described on this datasheet, we will offer a refund or replacement. For full details of the Abpromise, please visit <https://www.abcam.com/abpromise> or contact our technical team.

Terms and conditions

- Guarantee only valid for products bought direct from Abcam or one of our authorized distributors