


Anti-Paxillin (phospho Y31) antibody ab4832

[8 References](#) [3 Images](#)

Overview

Product name	Anti-Paxillin (phospho Y31) antibody
Description	Rabbit polyclonal to Paxillin (phospho Y31)
Host species	Rabbit
Tested applications	Suitable for: ICC/IF, WB
Species reactivity	Reacts with: Mouse, Human Predicted to work with: Chicken 
Immunogen	Synthetic peptide corresponding to Human Paxillin (phospho Y31).
Positive control	ICC: NIH/3T3 (mouse embryo fibroblast cell line), NM μ MG (mouse mammary) cells. WB: A431 (human epidermoid carcinoma cell line), HeLa (human epithelial cell line from cervix adenocarcinoma), NIH/3T3 (mouse embryo fibroblast cell line), A549 (human lung carcinoma cell line) cell lysate.
General notes	<p>The Life Science industry has been in the grips of a reproducibility crisis for a number of years. Abcam is leading the way in addressing this with our range of recombinant monoclonal antibodies and knockout edited cell lines for gold-standard validation. Please check that this product meets your needs before purchasing.</p> <p>If you have any questions, special requirements or concerns, please send us an inquiry and/or contact our Support team ahead of purchase. Recommended alternatives for this product can be found below, along with publications, customer reviews and Q&As</p>

Properties

Form	Liquid
Storage instructions	Shipped at 4°C. Upon delivery aliquot and store at -20°C or -80°C. Avoid repeated freeze / thaw cycles.
Storage buffer	pH: 7.30 Preservative: 0.05% Sodium azide Constituents: PBS, 50% Glycerol (glycerin, glycerine), 0.1% BSA
Purity	Immunogen affinity purified
Purification notes	Purified from rabbit serum by sequential epitope-specific chromatography. The antibody has been negatively preadsorbed using i) a non-phosphopeptide corresponding to the site of phosphorylation to remove antibody that is reactive with non-phosphorylated paxillin, and ii) a

generic tyrosine phosphorylated peptide to remove antibody that is reactive with phosphotyrosine, irrespective of the sequence. The final product is generated by affinity chromatography using a paxillin-derived peptide that is phosphorylated at tyrosine 31.

Clonality Polyclonal
Isotype IgG

Applications

The Abpromise guarantee Our **Abpromise guarantee** covers the use of ab4832 in the following tested applications.

The application notes include recommended starting dilutions; optimal dilutions/concentrations should be determined by the end user.

Application	Abreviews	Notes
ICC/IF		1/250.
WB		1/1000. Predicted molecular weight: 68 kDa.

Target

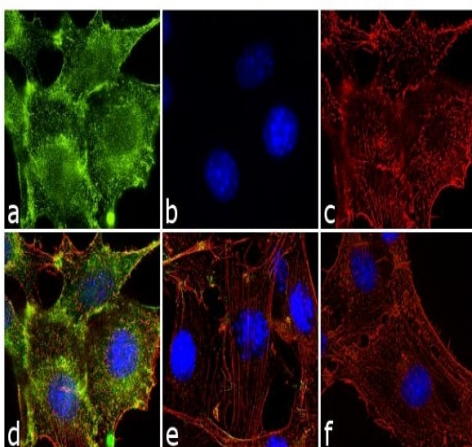
Function Cytoskeletal protein involved in actin-membrane attachment at sites of cell adhesion to the extracellular matrix (focal adhesion).

Sequence similarities Belongs to the paxillin family.
Contains 4 LIM zinc-binding domains.

Post-translational modifications Phosphorylated on tyrosine residues during integrin-mediated cell adhesion, embryonic development, fibroblast transformation and following stimulation of cells by mitogens.

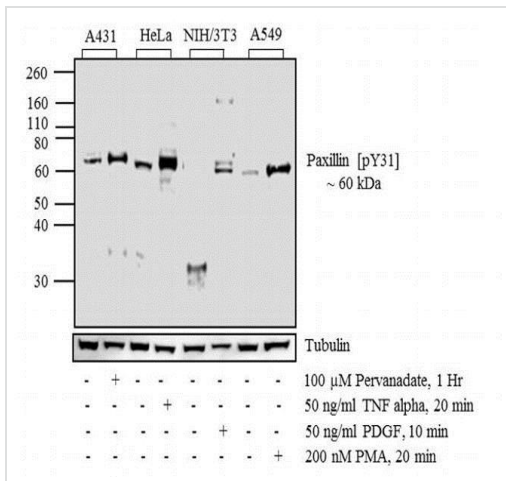
Cellular localization Cytoplasm > cytoskeleton. Cell junction > focal adhesion.

Images



Immunocytochemistry/ Immunofluorescence of NIH/3T3 (mouse embryo fibroblast cell line) treated with 50 ng of PDGF for 10 minutes with ab4832 (1/250). A Goat anti-Rabbit IgG (H+L) Alexa Fluor® 488 conjugate (1/2000) was used as a secondary (Green). DAPI (Blue) was used as a counter stain. F-actin was stained with Alexa Fluor® 555 Rhodamine Phalloidin (1/300). Panel e is untreated cells and panel f had no primary antibody.

Immunocytochemistry/ Immunofluorescence - Anti-Paxillin (phospho Y31) antibody (ab4832)



Western blot - Anti-Paxillin (phospho Y31) antibody (ab4832)

All lanes : Anti-Paxillin (phospho Y31) antibody (ab4832)

Lane 1 : A431 (human epidermoid carcinoma cell line) whole cell lysate

Lane 2 : A431 (human epidermoid carcinoma cell line) whole cell lysate treated for 1 Hr with 100 μM of Pervanadate

Lane 3 : HeLa (human epithelial cell line from cervix adenocarcinoma) whole cell lysate

Lane 4 : HeLa (human epithelial cell line from cervix adenocarcinoma) whole cell lysate treated for 20 minutes with 50 ng/mL of TNF alpha

Lane 5 : NIH/3T3 (mouse embryo fibroblast cell line) whole cell lysate

Lane 6 : NIH/3T3 (mouse embryo fibroblast cell line) whole cell lysate treated for 10 minutes with 50 ng/mL of PDGF

Lane 7 : A549 (human lung carcinoma cell line) whole cell lysate

Lane 8 : A549 (human lung carcinoma cell line) whole cell lysate treated for 20 minutes with 200 nM of PMA

Lysates/proteins at 20 μl per lane.

Secondary

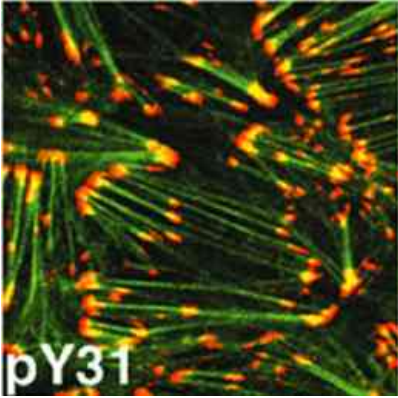
All lanes : Goat anti-Rabbit IgG (H+L) HRP conjugate at 1/2500 dilution

Developed using the ECL technique.

Predicted band size: 68 kDa

Observed band size: 60 kDa

ab4832 was diluted between 1/500 and 1/2000.



Colocalization of phospho Paxillin and actin in TGF-beta treated NM μ MG (mouse mammary) cells. Green = actin stress fibers, Orange = Paxillin [pY31], Yellow = colocalization.

Immunocytochemistry/ Immunofluorescence - Anti-Paxillin (phospho Y31) antibody (ab4832)

Please note: All products are "FOR RESEARCH USE ONLY. NOT FOR USE IN DIAGNOSTIC PROCEDURES"

Our Abpromise to you: Quality guaranteed and expert technical support

- Replacement or refund for products not performing as stated on the datasheet
- Valid for 12 months from date of delivery
- Response to your inquiry within 24 hours
- We provide support in Chinese, English, French, German, Japanese and Spanish
- Extensive multi-media technical resources to help you
- We investigate all quality concerns to ensure our products perform to the highest standards

If the product does not perform as described on this datasheet, we will offer a refund or replacement. For full details of the Abpromise, please visit <https://www.abcam.com/abpromise> or contact our technical team.

Terms and conditions

- Guarantee only valid for products bought direct from Abcam or one of our authorized distributors