


## Product datasheet

# Anti-PCB antibody ab233106

[6 Images](#)

### Overview

---

<b>Product name</b>	Anti-PCB antibody
<b>Description</b>	Rabbit polyclonal to PCB
<b>Host species</b>	Rabbit
<b>Tested applications</b>	<b>Suitable for:</b> WB, IHC-P
<b>Species reactivity</b>	<b>Reacts with:</b> Human, Pig <b>Predicted to work with:</b> Mouse, Rat, Cow 
<b>Immunogen</b>	Recombinant fragment (His-T7-tag) corresponding to Human PCB aa 1-500. (Expressed in E.coli). Database link: <a href="#">P11498</a> <a href="#">Run BLAST with</a> <a href="#">Run BLAST with</a>
<b>Positive control</b>	WB: Recombinant human PCB protein; Pig cerebrum and liver lysates. IHC-P: Human cerebrum, kidney and liver tissues.
<b>General notes</b>	<p>The Life Science industry has been in the grips of a reproducibility crisis for a number of years. Abcam is leading the way in addressing this with our range of recombinant monoclonal antibodies and knockout edited cell lines for gold-standard validation. Please check that this product meets your needs before purchasing.</p> <p>If you have any questions, special requirements or concerns, please send us an inquiry and/or contact our Support team ahead of purchase. Recommended alternatives for this product can be found below, along with publications, customer reviews and Q&amp;As</p>

### Properties

---

<b>Form</b>	Liquid
<b>Storage instructions</b>	Shipped at 4°C. Store at +4°C short term (1-2 weeks). Upon delivery aliquot. Store at -20°C long term. Avoid freeze / thaw cycle.
<b>Storage buffer</b>	pH: 7.40 Preservative: 0.011% Proclin 300 Constituents: 55.77% Glycerol (glycerin, glycerine), 44.219% PBS
<b>Purity</b>	Immunogen affinity purified
<b>Purification notes</b>	ab233106 was purified by antigen-specific affinity chromatography followed by Protein A affinity chromatography.

<b>Clonality</b>	Polyclonal
<b>Isotype</b>	IgG

## Applications

**The Abpromise guarantee** Our **Abpromise guarantee** covers the use of ab233106 in the following tested applications.

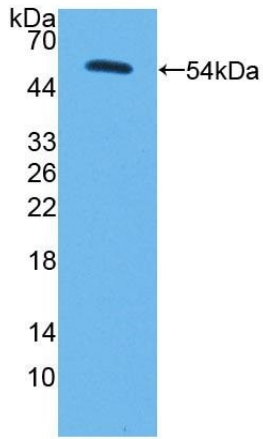
The application notes include recommended starting dilutions; optimal dilutions/concentrations should be determined by the end user.

Application	Abreviews	Notes
WB		Use a concentration of 0.2 - 2 µg/ml. Predicted molecular weight: 130 kDa.
IHC-P		Use a concentration of 5 - 20 µg/ml.

## Target

<b>Function</b>	Pyruvate carboxylase catalyzes a 2-step reaction, involving the ATP-dependent carboxylation of the covalently attached biotin in the first step and the transfer of the carboxyl group to pyruvate in the second. Catalyzes in a tissue specific manner, the initial reactions of glucose (liver, kidney) and lipid (adipose tissue, liver, brain) synthesis from pyruvate.
<b>Pathway</b>	Carbohydrate biosynthesis; gluconeogenesis.
<b>Involvement in disease</b>	Defects in PC are the cause of pyruvate carboxylase deficiency (PC deficiency) [MIM:266150]. PC deficiency leads to lactic acidosis, mental retardation and death. It occurs in three forms: mild or type A, severe neonatal or type B, and a very mild lacticacidemia.
<b>Sequence similarities</b>	Contains 1 ATP-grasp domain. Contains 1 biotin carboxylation domain. Contains 1 biotinyl-binding domain. Contains 1 carboxyltransferase domain.
<b>Cellular localization</b>	Mitochondrion matrix.

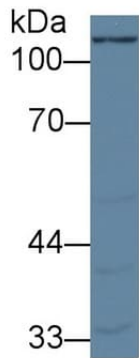
## Images



Western blot - Anti-PCB antibody (ab233106)

Anti-PCB antibody (ab233106) at 2  $\mu$ g/ml + Recombinant human PCB protein

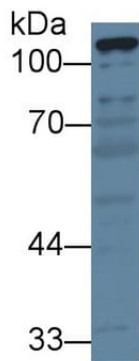
**Predicted band size:** 130 kDa



Western blot - Anti-PCB antibody (ab233106)

Anti-PCB antibody (ab233106) at 2  $\mu$ g/ml + Pig cerebrum lysate

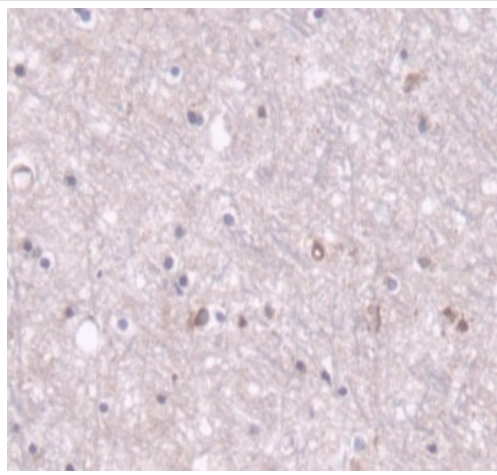
**Predicted band size:** 130 kDa



Western blot - Anti-PCB antibody (ab233106)

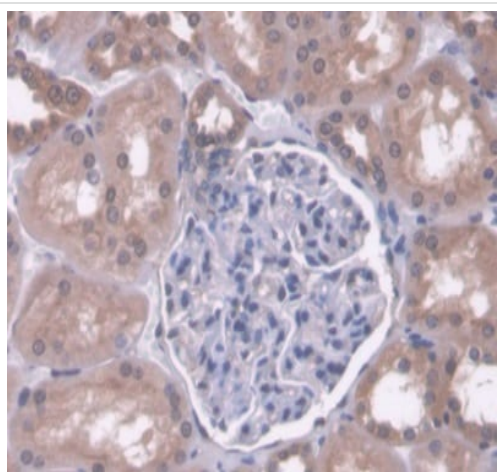
Anti-PCB antibody (ab233106) at 2  $\mu$ g/ml + Pig liver lysate

**Predicted band size:** 130 kDa



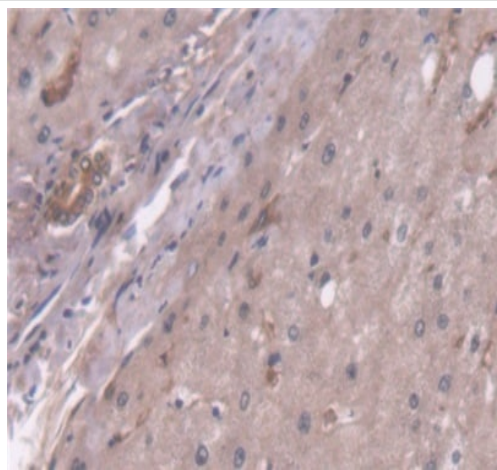
Paraffin-embedded human cerebrum tissue stained for PCB using ab233106 at 20 µg/ml in immunohistochemical analysis. DAB staining.

Immunohistochemistry (Formalin/PFA-fixed paraffin-embedded sections) - Anti-PCB antibody (ab233106)



Paraffin-embedded human kidney tissue stained for PCB using ab233106 at 20 µg/ml in immunohistochemical analysis. DAB staining.

Immunohistochemistry (Formalin/PFA-fixed paraffin-embedded sections) - Anti-PCB antibody (ab233106)



Paraffin-embedded human liver tissue stained for PCB using ab233106 at 20 µg/ml in immunohistochemical analysis. DAB staining.

Immunohistochemistry (Formalin/PFA-fixed paraffin-embedded sections) - Anti-PCB antibody (ab233106)

**Please note:** All products are "FOR RESEARCH USE ONLY. NOT FOR USE IN DIAGNOSTIC PROCEDURES"

### Our Abpromise to you: Quality guaranteed and expert technical support

---

- Replacement or refund for products not performing as stated on the datasheet
- Valid for 12 months from date of delivery
- Response to your inquiry within 24 hours
- We provide support in Chinese, English, French, German, Japanese and Spanish
- Extensive multi-media technical resources to help you
- We investigate all quality concerns to ensure our products perform to the highest standards

If the product does not perform as described on this datasheet, we will offer a refund or replacement. For full details of the Abpromise, please visit <https://www.abcam.com/abpromise> or contact our technical team.

### Terms and conditions

---

- Guarantee only valid for products bought direct from Abcam or one of our authorized distributors