


Anti-PCCB antibody ab96729

[2 References](#) [2 Images](#)

Overview

| | |
|----------------------------|---|
| Product name | Anti-PCCB antibody |
| Description | Rabbit polyclonal to PCCB |
| Host species | Rabbit |
| Tested applications | Suitable for: IHC-P, WB |
| Species reactivity | Reacts with: Human Predicted to work with: Mouse, Rat, Cow, Pig, Zebrafish  |
| Immunogen | Recombinant fragment, corresponding to a region within amino acids 167-450 of Human PCCB (NP_000523). |
| Positive control | HepG2 whole cell lysate (ab7900) for WB and Lung Ad Cancer PC14 for IHC-P |
| General notes | <p>The Life Science industry has been in the grips of a reproducibility crisis for a number of years. Abcam is leading the way in addressing this with our range of recombinant monoclonal antibodies and knockout edited cell lines for gold-standard validation. Please check that this product meets your needs before purchasing.</p> <p>If you have any questions, special requirements or concerns, please send us an inquiry and/or contact our Support team ahead of purchase. Recommended alternatives for this product can be found below, along with publications, customer reviews and Q&As</p> |

Properties

| | |
|-----------------------------|---|
| Form | Liquid |
| Storage instructions | Shipped at 4°C. Upon delivery aliquot and store at -20°C or -80°C. Avoid repeated freeze / thaw cycles. |
| Storage buffer | pH: 7.00 Preservative: 0.01% Thimerosal (merthiolate) Constituents: 1.21% Tris, 0.75% Glycine, 10% Glycerol (glycerin, glycerine) |
| Purity | Immunogen affinity purified |
| Clonality | Polyclonal |
| Isotype | IgG |

Applications

The Abpromise guarantee

Our **Abpromise guarantee** covers the use of ab96729 in the following tested applications.

The application notes include recommended starting dilutions; optimal dilutions/concentrations should be determined by the end user.

| Application | Abreviews | Notes |
|-------------|-----------|---|
| IHC-P | | 1/100 - 1/250. |
| WB | | 1/500 - 1/3000. Predicted molecular weight: 58 kDa. |

Target

Pathway

Metabolic intermediate metabolism; propanoyl-CoA degradation; succinyl-CoA from propanoyl-CoA: step 1/3.

Involvement in disease

Defects in PCCB are the cause of propionic acidemia type II (PA-2) [MIM:606054]. PA-2 is a life-threatening disease characterized by episodic vomiting, lethargy and ketosis, neutropenia, periodic thrombocytopenia, hypogammaglobulinemia, developmental retardation, and intolerance to protein.

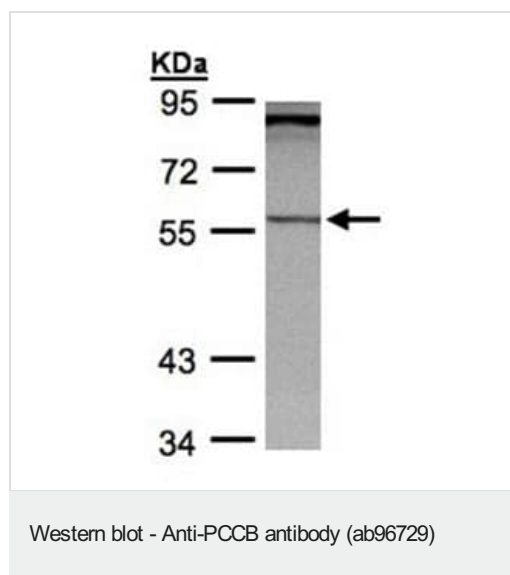
Sequence similarities

Belongs to the AccD/PCCB family.
Contains 1 carboxyltransferase domain.

Cellular localization

Mitochondrion matrix.

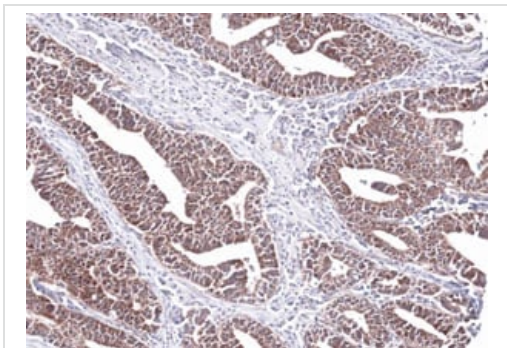
Images



Anti-PCCB antibody (ab96729) at 1/1000 dilution + HepG2 whole cell lysate at 30 µg

Predicted band size: 58 kDa

7.5% SDS PAGE



Immunohistochemical analysis of paraffin-embedded Lung Ad Cancer PC14, using ab96729 at 1:100 dilution.

Immunohistochemistry (Formalin/PFA-fixed paraffin-embedded sections) - Anti-PCCB antibody (ab96729)

Please note: All products are "FOR RESEARCH USE ONLY. NOT FOR USE IN DIAGNOSTIC PROCEDURES"

Our Abpromise to you: Quality guaranteed and expert technical support

- Replacement or refund for products not performing as stated on the datasheet
- Valid for 12 months from date of delivery
- Response to your inquiry within 24 hours
- We provide support in Chinese, English, French, German, Japanese and Spanish
- Extensive multi-media technical resources to help you
- We investigate all quality concerns to ensure our products perform to the highest standards

If the product does not perform as described on this datasheet, we will offer a refund or replacement. For full details of the Abpromise, please visit <https://www.abcam.com/abpromise> or contact our technical team.

Terms and conditions

- Guarantee only valid for products bought direct from Abcam or one of our authorized distributors