

## Product datasheet

### Anti-PCDH15 antibody [EPR19600] ab202560

Recombinant **RabMAb**

★★★★★ **2 Abreviews** [3 Images](#)

#### Overview

<b>Product name</b>	Anti-PCDH15 antibody [EPR19600]
<b>Description</b>	Rabbit monoclonal [EPR19600] to PCDH15
<b>Host species</b>	Rabbit
<b>Tested applications</b>	<b>Suitable for:</b> WB, ICC/IF
<b>Species reactivity</b>	<b>Reacts with:</b> Mouse
<b>Immunogen</b>	Recombinant fragment. This information is proprietary to Abcam and/or its suppliers.
<b>Positive control</b>	WB: 293T whole cell lysate transfected with a DDDK-tagged mouse PCDH15 construct . ICC/IF: HEK-293T cells transfected with a GFP-tagged mouse PCDH15 expression construct.
<b>General notes</b>	<p>This product is a recombinant monoclonal antibody, which offers several advantages including:</p> <ul style="list-style-type: none"> <li>- High batch-to-batch consistency and reproducibility</li> <li>- Improved sensitivity and specificity</li> <li>- Long-term security of supply</li> <li>- Animal-free production</li> </ul> <p>For more information <a href="#">see here</a>.</p> <p>Our RabMAb<sup>®</sup> technology is a patented hybridoma-based technology for making rabbit monoclonal antibodies. For details on our patents, please refer to <a href="#">RabMAb<sup>®</sup> patents</a>.</p>

#### Properties

<b>Form</b>	Liquid
<b>Storage instructions</b>	Shipped at 4°C. Store at +4°C short term (1-2 weeks). Upon delivery aliquot. Store at -20°C long term. Avoid freeze / thaw cycle.
<b>Storage buffer</b>	<p>pH: 7.2</p> <p>Preservative: 0.01% Sodium azide</p> <p>Constituents: 59% PBS, 40% Glycerol (glycerin, glycerine), 0.05% BSA</p>
<b>Purity</b>	Protein A purified
<b>Clonality</b>	Monoclonal
<b>Clone number</b>	EPR19600
<b>Isotype</b>	IgG

## Applications

### The Abpromise guarantee

Our **Abpromise guarantee** covers the use of ab202560 in the following tested applications.

The application notes include recommended starting dilutions; optimal dilutions/concentrations should be determined by the end user.

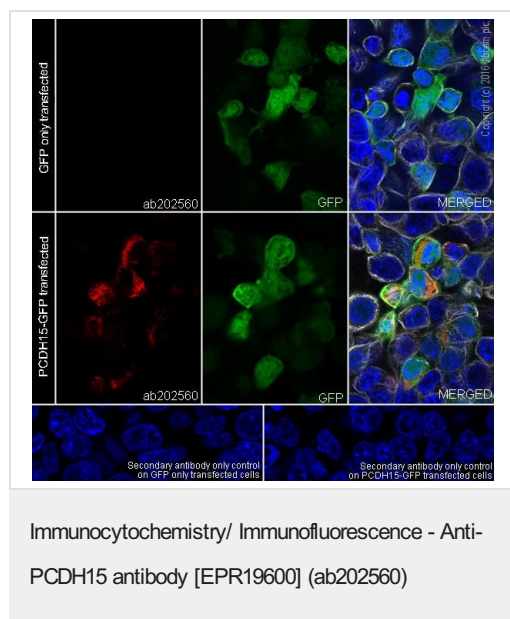
Application	Abreviews	Notes
WB	★★★★★ (1)	1/1000. Detects a band of approximately 260 kDa (predicted molecular weight: 215 kDa).
ICC/IF		1/500.

## Target

### Cellular localization

Cell Membrane

## Images



Immunofluorescent analysis of 4% paraformaldehyde-fixed, 0.1% Triton X-100 permeabilized HEK-293T (Human epithelial cell line from embryonic kidney transformed with large T antigen) cells transfected with a GFP-tagged mouse PCDH15 expression construct or GFP vector only, labeling PCDH15 with ab202560 at 1/500 dilution, followed by Goat anti-rabbit IgG (Alexa Fluor® 594) (**ab150080**) secondary antibody at 1/1000 dilution (red).

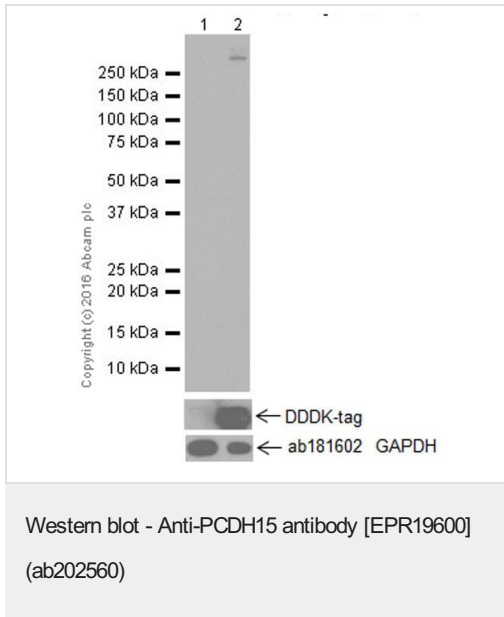
Confocal image showing positive staining on HEK-293 cells transfected with a GFP-tagged mouse PCDH15 expression construct.

This mouse PCDH15 plasmid was kindly provided by our collaborator Dr. Yun Shi, Nanjing University MARC.

The nuclear counterstain is DAPI (blue).

Tubulin is detected with **ab7291** (anti-Tubulin mouse mAb) at 1/1000 dilution and **ab150115** (Alexa Fluor® 647 Goat anti-Mouse secondary) at 1/1000 dilution (white).

Secondary antibody only control: Used PBS instead of primary antibody, secondary antibody is Goat anti-rabbit IgG (Alexa Fluor® 594) (**ab150080**) at 1/1000 dilution.



**All lanes :** Anti-PCDH15 antibody [EPR19600] (ab202560) at 1/1000 dilution

**Lane 1 :** 293T (Human epithelial cell line from embryonic kidney) whole cell lysate transfected with an empty expression vector

**Lane 2 :** 293T whole cell lysate transfected with a DDDK-tagged mouse PCDH15 construct

Lysates/proteins at 10 µg per lane.

### Secondary

**All lanes :** Goat Anti-Rabbit IgG H&L (HRP) (**ab97051**) at 1/100000 dilution

**Predicted band size:** 215 kDa

**Observed band size:** 260 kDa

**Exposure time:** 30 seconds

Blocking/Dilution buffer: 5% NFDm/TBST.

The expression profile observed is consistent with what has been described in the literature (PMID: 16481439).

The mouse PCDH15 plasmid was kindly provided by our collaborator Dr. Yun Shi, Nanjing University MARC.

WB detection of endogenous PCDH15 is not shown due to unavailability of appropriate testing material.

### Why choose a recombinant antibody?



**Research with confidence**  
Consistent and reproducible results



**Long-term and scalable supply**  
Recombinant technology



**Success from the first experiment**  
Confirmed specificity



**Ethical standards compliant**  
Animal-free production

Anti-PCDH15 antibody [EPR19600] (ab202560)

**Please note:** All products are "FOR RESEARCH USE ONLY. NOT FOR USE IN DIAGNOSTIC PROCEDURES"

### Our Abpromise to you: Quality guaranteed and expert technical support

---

- Replacement or refund for products not performing as stated on the datasheet
- Valid for 12 months from date of delivery
- Response to your inquiry within 24 hours
- We provide support in Chinese, English, French, German, Japanese and Spanish
- Extensive multi-media technical resources to help you
- We investigate all quality concerns to ensure our products perform to the highest standards

If the product does not perform as described on this datasheet, we will offer a refund or replacement. For full details of the Abpromise, please visit <https://www.abcam.com/abpromise> or contact our technical team.

### Terms and conditions

---

- Guarantee only valid for products bought direct from Abcam or one of our authorized distributors