


Product datasheet

Anti-PCDHAC2 antibody ab154720

1 Image

Overview

Product name	Anti-PCDHAC2 antibody
Description	Rabbit polyclonal to PCDHAC2
Host species	Rabbit
Tested applications	Suitable for: WB
Species reactivity	Reacts with: Human Predicted to work with: Mouse, Rat 
Immunogen	Recombinant fragment, corresponding to a region within internal sequence amino acids 598-827 of Human PCDHAC2 (UniProt Q9Y5I4).
Positive control	NT2D1 and SK-N-SH whole cell lysates.
General notes	<p>The Life Science industry has been in the grips of a reproducibility crisis for a number of years. Abcam is leading the way in addressing this with our range of recombinant monoclonal antibodies and knockout edited cell lines for gold-standard validation. Please check that this product meets your needs before purchasing.</p> <p>If you have any questions, special requirements or concerns, please send us an inquiry and/or contact our Support team ahead of purchase. Recommended alternatives for this product can be found below, along with publications, customer reviews and Q&As</p>

Properties

Form	Liquid
Storage instructions	Shipped at 4°C. Upon delivery aliquot. Store at -20°C or -80°C. Avoid freeze / thaw cycle.
Storage buffer	pH: 7.00 Preservative: 0.01% Thimerosal (merthiolate) Constituents: 79.99% PBS, 20% Glycerol (glycerin, glycerine)
Purity	Immunogen affinity purified
Clonality	Polyclonal
Isotype	IgG

Applications

The Abpromise guarantee

Our **Abpromise guarantee** covers the use of ab154720 in the following tested applications.

The application notes include recommended starting dilutions; optimal dilutions/concentrations should be determined by the end user.

Application	Abreviews	Notes
WB		1/500 - 1/3000. Predicted molecular weight: 109 kDa.

Target

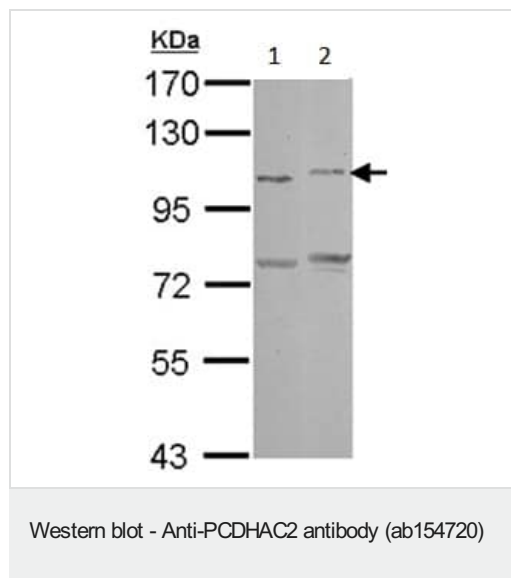
Relevance

PCDHAC2 (Protocadherin alpha C2) is a member of the protocadherin family, a subgroup of the cadherin superfamily. Protocadherins are neural cadherin-like cell adhesion proteins that are integral membrane proteins. Their specific functions are unknown but they most likely play a critical role in the establishment and function of specific neuronal connections in the brain. PCDHAC2 is one of fifteen tandemly arranged genes within the alpha cluster of protocadherin genes on 5q31.

Cellular localization

Cell membrane. Single-pass type I membrane protein.

Images



All lanes : Anti-PCDHAC2 antibody (ab154720) at 1/500 dilution

Lane 1 : NT2D1 whole cell lysate

Lane 2 : SK-N-SH whole cell lysate

Lysates/proteins at 30 µg per lane.

Predicted band size: 109 kDa

7.5% SDS PAGE

Please note: All products are "FOR RESEARCH USE ONLY. NOT FOR USE IN DIAGNOSTIC PROCEDURES"

Our Abpromise to you: Quality guaranteed and expert technical support

- Replacement or refund for products not performing as stated on the datasheet
- Valid for 12 months from date of delivery
- Response to your inquiry within 24 hours
- We provide support in Chinese, English, French, German, Japanese and Spanish
- Extensive multi-media technical resources to help you
- We investigate all quality concerns to ensure our products perform to the highest standards

If the product does not perform as described on this datasheet, we will offer a refund or replacement. For full details of the Abpromise, please visit <https://www.abcam.com/abpromise> or contact our technical team.

Terms and conditions

- Guarantee only valid for products bought direct from Abcam or one of our authorized distributors