


Anti-PCF11 antibody ab134391

[2 References](#) [2 Images](#)

Overview

Product name	Anti-PCF11 antibody
Description	Rabbit polyclonal to PCF11
Host species	Rabbit
Tested applications	Suitable for: WB, IP
Species reactivity	Reacts with: Human Predicted to work with: Chimpanzee, Rhesus monkey, Gorilla, Orangutan 
Immunogen	Synthetic peptide, corresponding to a region within amino acids 1505-1555 of Human PCF11 (NP_056969.2).
Positive control	HeLa, 293T and Jurkat whole cell lysate (ab7899)
General notes	<p>The Life Science industry has been in the grips of a reproducibility crisis for a number of years. Abcam is leading the way in addressing this with our range of recombinant monoclonal antibodies and knockout edited cell lines for gold-standard validation. Please check that this product meets your needs before purchasing.</p> <p>If you have any questions, special requirements or concerns, please send us an inquiry and/or contact our Support team ahead of purchase. Recommended alternatives for this product can be found below, along with publications, customer reviews and Q&As</p>

Properties

Form	Liquid
Storage instructions	Shipped at 4°C. Upon delivery aliquot and store at -20°C. Avoid repeated freeze / thaw cycles.
Storage buffer	<p>pH: 7</p> <p>Preservative: 0.09% Sodium azide</p> <p>Constituent: 99% Tris citrate/phosphate</p> <p>pH 7 to 8</p>
Purity	Immunogen affinity purified
Clonality	Polyclonal
Isotype	IgG

Applications

The Abpromise guarantee

Our **Abpromise guarantee** covers the use of ab134391 in the following tested applications.

The application notes include recommended starting dilutions; optimal dilutions/concentrations should be determined by the end user.

Application	Abreviews	Notes
WB		1/2000 - 1/10000. Predicted molecular weight: 173 kDa.
IP		Use a concentration of 2 - 10 µg/ml.

Target

Function

Component of pre-mRNA cleavage complex II.

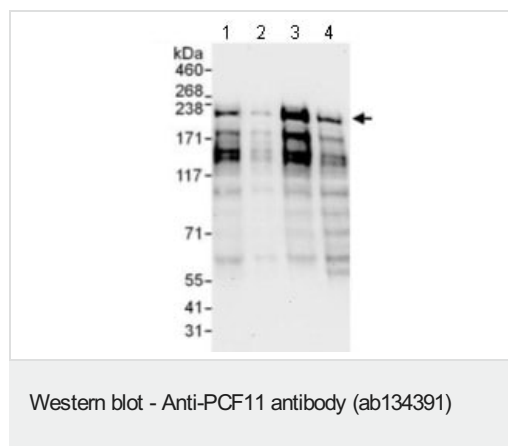
Sequence similarities

Contains 1 CID domain.

Cellular localization

Nucleus.

Images



All lanes : Anti-PCF11 antibody (ab134391) at 0.1 µg/ml

Lane 1 : HeLa whole cell lysate at 50 µg

Lane 2 : HeLa whole cell lysate at 15 µg

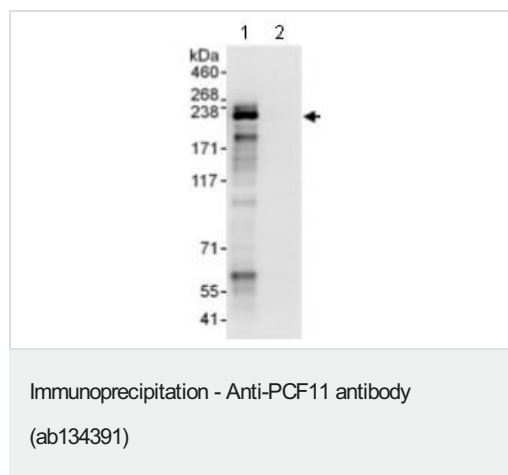
Lane 3 : 293T whole cell lysate at 50 µg

Lane 4 : Jurkat whole cell lysate at 50 µg

Developed using the ECL technique.

Predicted band size: 173 kDa

Exposure time: 30 seconds



Detection of PCF11 in Immunoprecipitates of HeLa whole cell lysates (1 mg for IP, 20% of IP loaded) using ab134391 at 6 µg/mg lysate for IP (Lane 1) and at 1 µg/ml for subsequent Western blot detection. Lane 2 represents control IgG IP.

Detection: Chemiluminescence with an exposure time of 3 seconds.

Please note: All products are "FOR RESEARCH USE ONLY. NOT FOR USE IN DIAGNOSTIC PROCEDURES"

Our Abpromise to you: Quality guaranteed and expert technical support

- Replacement or refund for products not performing as stated on the datasheet
- Valid for 12 months from date of delivery
- Response to your inquiry within 24 hours

- We provide support in Chinese, English, French, German, Japanese and Spanish
- Extensive multi-media technical resources to help you
- We investigate all quality concerns to ensure our products perform to the highest standards

If the product does not perform as described on this datasheet, we will offer a refund or replacement. For full details of the Abpromise, please visit <https://www.abcam.com/abpromise> or contact our technical team.

Terms and conditions

- Guarantee only valid for products bought direct from Abcam or one of our authorized distributors