




Product datasheet

Anti-PCIF1 antibody ab205016

[3 References](#) [2 Images](#)

Overview

Product name	Anti-PCIF1 antibody
Description	Rabbit polyclonal to PCIF1
Host species	Rabbit
Tested applications	Suitable for: IP, WB
Species reactivity	Reacts with: Mouse, Human Predicted to work with: Rabbit, Horse, Cat, Dog, Chimpanzee, Cynomolgus monkey, Rhesus monkey, Gorilla, Orangutan 
Immunogen	Synthetic peptide within Human PCIF1 aa 650 to the C-terminus (C terminal). The exact immunogen sequence used to generate this antibody is proprietary information. If additional detail on the immunogen is needed to determine the suitability of the antibody for your needs, please contact our Scientific Support team to discuss your requirements. NP_071387.1. Database link: Q9H4Z3  Run BLAST with  Run BLAST with
Positive control	Jurkat, HeLa, NIH 3T3, 293T and TCMK1 whole cell lysates.
General notes	<p>The Life Science industry has been in the grips of a reproducibility crisis for a number of years. Abcam is leading the way in addressing this with our range of recombinant monoclonal antibodies and knockout edited cell lines for gold-standard validation. Please check that this product meets your needs before purchasing.</p> <p>If you have any questions, special requirements or concerns, please send us an inquiry and/or contact our Support team ahead of purchase. Recommended alternatives for this product can be found below, along with publications, customer reviews and Q&As</p>

Properties

Form	Liquid
Storage instructions	Shipped at 4°C. Store at +4°C short term (1-2 weeks). Upon delivery aliquot. Store at -20°C long term. Avoid freeze / thaw cycle.
Storage buffer	pH: 7 Preservative: 0.09% Sodium azide Constituent: 99% Tris citrate/phosphate pH 7 to 8

Purity	Immunogen affinity purified
Purification notes	ab205016 was affinity purified using an epitope specific to PCIF1 immobilized on solid support.
Clonality	Polyclonal
Isotype	IgG

Applications

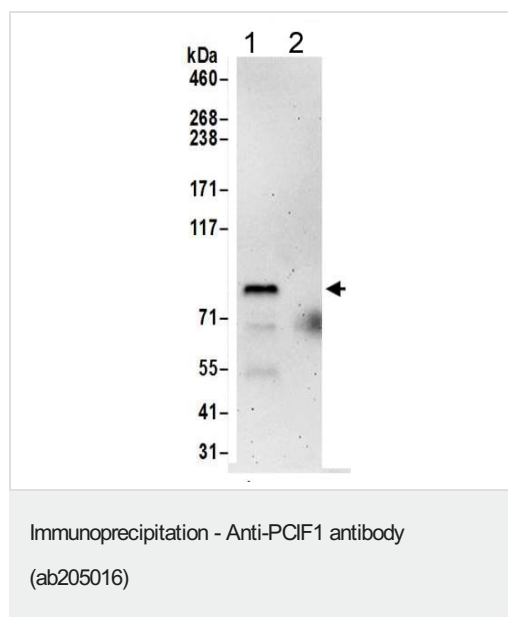
The Abpromise guarantee Our **Abpromise guarantee** covers the use of ab205016 in the following tested applications. The application notes include recommended starting dilutions; optimal dilutions/concentrations should be determined by the end user.

Application	Abreviews	Notes
IP		Use at 2-10 µg/mg of lysate.
WB		1/1000 - 1/5000. Predicted molecular weight: 81 kDa.

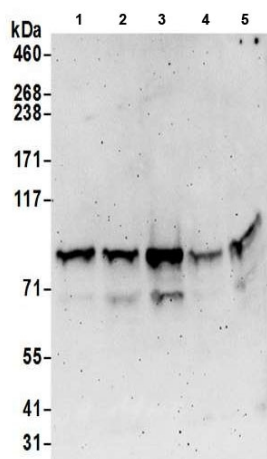
Target

Function	May play a role in transcription elongation or in coupling transcription to pre-mRNA processing through its association with the phosphorylated C-terminal domain (CTD) of RNAPII largest subunit.
Tissue specificity	Ubiquitous.
Sequence similarities	Contains 1 WW domain.
Domain	The WW domain is sufficient for direct and specific interaction with the phosphorylated CTD of RNAPII largest subunit.
Cellular localization	Nucleus.

Images



Detection of PCIF1 in Immunoprecipitates of 293T whole cell lysates (1 mg for IP, 20% of IP loaded) using ab205016 at 6 µg/mg lysate for IP (Lane 1). For WB detection an ab205016 was used at 0.4 µg/ml. Lane 2 represents control IgG IP. Detection: Chemiluminescence with an exposure time of 3 minutes.



Western blot - Anti-PCIF1 antibody (ab205016)

All lanes : Anti-PCIF1 antibody (ab205016) at 0.4 µg/ml

Lane 1 : HeLa whole cell lysate

Lane 2 : 293T whole cell lysate

Lane 3 : Jurkat whole cell lysate

Lane 4 : TCMK1 whole cell lysate

Lane 5 : NIH 3T3 whole cell lysate

Lysates/proteins at 50 µg per lane.

Developed using the ECL technique.

Predicted band size: 81 kDa

Exposure time: 3 minutes

Please note: All products are "FOR RESEARCH USE ONLY. NOT FOR USE IN DIAGNOSTIC PROCEDURES"

Our Abpromise to you: Quality guaranteed and expert technical support

- Replacement or refund for products not performing as stated on the datasheet
- Valid for 12 months from date of delivery
- Response to your inquiry within 24 hours
- We provide support in Chinese, English, French, German, Japanese and Spanish
- Extensive multi-media technical resources to help you
- We investigate all quality concerns to ensure our products perform to the highest standards

If the product does not perform as described on this datasheet, we will offer a refund or replacement. For full details of the Abpromise, please visit <https://www.abcam.com/abpromise> or contact our technical team.

Terms and conditions

- Guarantee only valid for products bought direct from Abcam or one of our authorized distributors