


## Product datasheet

### Anti-PCM1 antibody ab72443

★★★★★ [2 Abreviews](#) [6 References](#) [2 Images](#)

#### Overview

<b>Product name</b>	Anti-PCM1 antibody
<b>Description</b>	Rabbit polyclonal to PCM1
<b>Host species</b>	Rabbit
<b>Tested applications</b>	<b>Suitable for:</b> WB, IP
<b>Species reactivity</b>	<b>Reacts with:</b> Mouse, Human <b>Predicted to work with:</b> Rat, Rabbit, Horse, Guinea pig, Cow, Dog, Pig, Chimpanzee, Ferret, Rhesus monkey, Orangutan 
<b>Immunogen</b>	A synthetic peptide corresponding to a region between residues 1925 and 1975 of human PCM1.
<b>Positive control</b>	HeLa whole cell lysate; 293T and mouse NIH3T3 cell lysates
<b>General notes</b>	<p>The Life Science industry has been in the grips of a reproducibility crisis for a number of years. Abcam is leading the way in addressing this with our range of recombinant monoclonal antibodies and knockout edited cell lines for gold-standard validation. Please check that this product meets your needs before purchasing.</p> <p>If you have any questions, special requirements or concerns, please send us an inquiry and/or contact our Support team ahead of purchase. Recommended alternatives for this product can be found below, along with publications, customer reviews and Q&amp;As</p>

#### Properties

<b>Form</b>	Liquid
<b>Storage instructions</b>	Shipped at 4°C. Upon delivery aliquot and store at -20°C. Avoid freeze / thaw cycles.
<b>Storage buffer</b>	pH: 6.8 Preservative: 0.09% Sodium azide Constituents: 0.1% BSA, Tris buffered saline
<b>Purity</b>	Immunogen affinity purified
<b>Clonality</b>	Polyclonal
<b>Isotype</b>	IgG

#### Applications

## The Abpromise guarantee

Our **Abpromise guarantee** covers the use of ab72443 in the following tested applications.

The application notes include recommended starting dilutions; optimal dilutions/concentrations should be determined by the end user.

Application	Abreviews	Notes
WB		1/2000 - 1/10000. Detects a band of approximately 270 kDa.
IP		Use a concentration of 2 - 5 µg/ml.

## Target

### Function

Required for centrosome assembly and function. Essential for the correct localization of several centrosomal proteins including CEP250, CETN3, PCNT and NEK2. Required to anchor microtubules to the centrosome. Involved in the biogenesis of cilia.

### Tissue specificity

Expressed in blood, bone marrow, breast, lymph node, ovary and thyroid.

### Involvement in disease

Defects in PCM1 are a cause of thyroid papillary carcinoma (TPC) [MIM:188550]. TPC is a common tumor of the thyroid that typically arises as an irregular, solid or cystic mass from otherwise normal thyroid tissue. Papillary carcinomas are malignant neoplasm characterized by the formation of numerous, irregular, finger-like projections of fibrous stroma that is covered with a surface layer of neoplastic epithelial cells. Note=A chromosomal aberration involving PCM1 is found in thyroid papillary carcinomas. Translocation t(8;10)(p21.3;q11.2) with RET links the protein kinase domain of RET to the major portion of PCM1.

Note=A chromosomal aberration involving PCM1 is found in a variety of hematological malignancies including atypical chronic myeloid leukemia (atypical CML) and T-cell lymphoma. Translocation t(8;9)(p22;p24) with JAK2 links the protein kinase domain of JAK2 to the major portion of PCM1.

### Sequence similarities

Belongs to the PCM1 family.

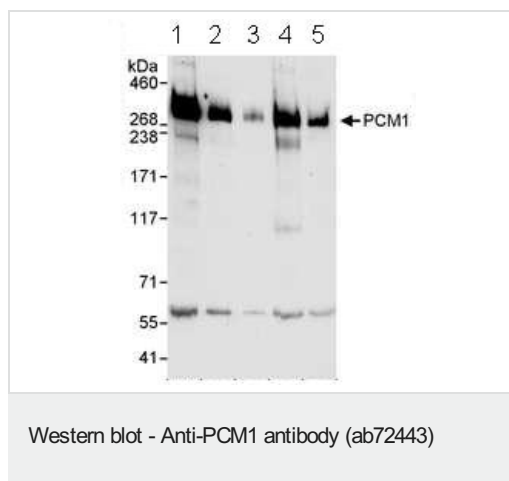
### Post-translational modifications

Phosphorylated upon DNA damage, probably by ATM or ATR.

### Cellular localization

Cytoplasm > cytoskeleton. Cytoplasm > cytoskeleton > centrosome. Cytoplasmic granule. Localizes to cytoplasmic granules which are enriched around the centrosome. This centrosomal enrichment requires microtubules and dynein. The majority of the protein dissociates from the centrosome during metaphase and subsequently localizes to the cleavage site in telophase.

## Images



**All lanes :** Anti-PCM1 antibody (ab72443) at 0.04 µg/ml

**Lane 1 :** HeLa whole cell lysate at 50 µg

**Lane 2 :** HeLa whole cell lysate at 15 µg

**Lane 3 :** HeLa whole cell lysate at 5 µg

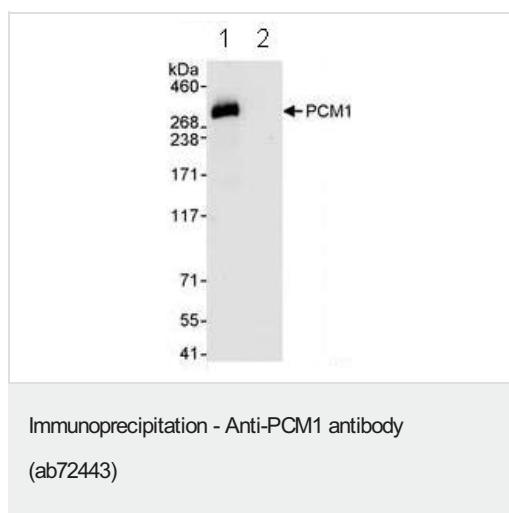
**Lane 4 :** 293T cell lysate at 50 µg

**Lane 5 :** Mouse NIH3T3 cell lysate at 50 µg

**Observed band size:** 270 kDa

**Additional bands at:** 60 kDa. We are unsure as to the identity of these extra bands.

Detection: Chemiluminescence with exposure times of 30 seconds



Immunoprecipitation of PCM1 from 1mg HeLa whole cell lysate by 3 µg ab72443 followed by WB (20% of IP loaded):

Lane 1: PCM1 precipitate

Lane 2: Control IgG

For blotting immunoprecipitated PCM1, ab72443 was used at 1 µg/ml.

Detection: Chemiluminescence with an exposure time of 10 seconds.

**Please note:** All products are "FOR RESEARCH USE ONLY. NOT FOR USE IN DIAGNOSTIC PROCEDURES"

## Our Abpromise to you: Quality guaranteed and expert technical support

- Replacement or refund for products not performing as stated on the datasheet
- Valid for 12 months from date of delivery
- Response to your inquiry within 24 hours
- We provide support in Chinese, English, French, German, Japanese and Spanish
- Extensive multi-media technical resources to help you
- We investigate all quality concerns to ensure our products perform to the highest standards

If the product does not perform as described on this datasheet, we will offer a refund or replacement. For full details of the Abpromise, please visit <https://www.abcam.com/abpromise> or contact our technical team.

## Terms and conditions

- Guarantee only valid for products bought direct from Abcam or one of our authorized distributors