


Product datasheet

Anti-PCM1 antibody [CL0206] ab154142

★★★★☆ [3 Abreviews](#) [3 References](#) [6 Images](#)

Overview

Product name	Anti-PCM1 antibody [CL0206]
Description	Mouse monoclonal [CL0206] to PCM1
Host species	Mouse
Tested applications	Suitable for: IHC-P, WB
Species reactivity	Reacts with: Human Predicted to work with: Mouse, Rat 
Immunogen	Recombinant fragment. This information is proprietary to Abcam and/or its suppliers.
Positive control	Human testis, cerebral cortex, fallopian tube and striated muscle tissues; RT4 cell lysate.
General notes	<p>The Life Science industry has been in the grips of a reproducibility crisis for a number of years. Abcam is leading the way in addressing this with our range of recombinant monoclonal antibodies and knockout edited cell lines for gold-standard validation. Please check that this product meets your needs before purchasing.</p> <p>If you have any questions, special requirements or concerns, please send us an inquiry and/or contact our Support team ahead of purchase. Recommended alternatives for this product can be found below, along with publications, customer reviews and Q&As</p>

Properties

Form	Liquid
Storage instructions	Shipped at 4°C. Upon delivery aliquot and store at -20°C. Avoid repeated freeze / thaw cycles.
Storage buffer	pH: 7.20 Preservative: 0.02% Sodium azide Constituents: 59% PBS, 40% Glycerol (glycerin, glycerine)
Purity	Protein A purified
Clonality	Monoclonal
Clone number	CL0206
Isotype	IgG1

Applications

The Abpromise guarantee

Our **Abpromise guarantee** covers the use of ab154142 in the following tested applications.

The application notes include recommended starting dilutions; optimal dilutions/concentrations should be determined by the end user.

Application	Abreviews	Notes
IHC-P		1/200 - 1/500. Perform heat mediated antigen retrieval with citrate buffer pH 6 before commencing with IHC staining protocol.
WB	★★★★★ (1)	1/500 - 1/1000. Predicted molecular weight: 229 kDa.

Target

Function

Required for centrosome assembly and function. Essential for the correct localization of several centrosomal proteins including CEP250, CETN3, PCNT and NEK2. Required to anchor microtubules to the centrosome. Involved in the biogenesis of cilia.

Tissue specificity

Expressed in blood, bone marrow, breast, lymph node, ovary and thyroid.

Involvement in disease

Defects in PCM1 are a cause of thyroid papillary carcinoma (TPC) [MIM:188550]. TPC is a common tumor of the thyroid that typically arises as an irregular, solid or cystic mass from otherwise normal thyroid tissue. Papillary carcinomas are malignant neoplasm characterized by the formation of numerous, irregular, finger-like projections of fibrous stroma that is covered with a surface layer of neoplastic epithelial cells. Note=A chromosomal aberration involving PCM1 is found in thyroid papillary carcinomas. Translocation t(8;10)(p21.3;q11.2) with RET links the protein kinase domain of RET to the major portion of PCM1.

Note=A chromosomal aberration involving PCM1 is found in a variety of hematological malignancies including atypical chronic myeloid leukemia (atypical CML) and T-cell lymphoma. Translocation t(8;9)(p22;p24) with JAK2 links the protein kinase domain of JAK2 to the major portion of PCM1.

Sequence similarities

Belongs to the PCM1 family.

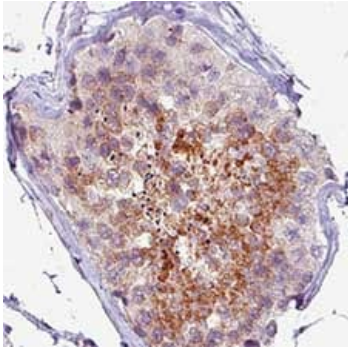
Post-translational modifications

Phosphorylated upon DNA damage, probably by ATM or ATR.

Cellular localization

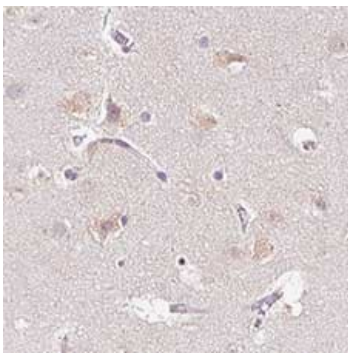
Cytoplasm > cytoskeleton. Cytoplasm > cytoskeleton > centrosome. Cytoplasmic granule. Localizes to cytoplasmic granules which are enriched around the centrosome. This centrosomal enrichment requires microtubules and dynein. The majority of the protein dissociates from the centrosome during metaphase and subsequently localizes to the cleavage site in telophase.

Images



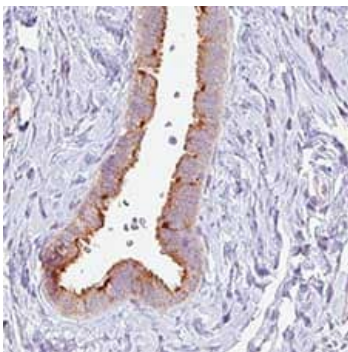
Immunohistochemical analysis of Human testis tissue labeling PCM1 with ab154142 at 1/200 dilution.

Immunohistochemistry (Formalin/PFA-fixed paraffin-embedded sections) - Anti-PCM1 antibody [CL0206] (ab154142)



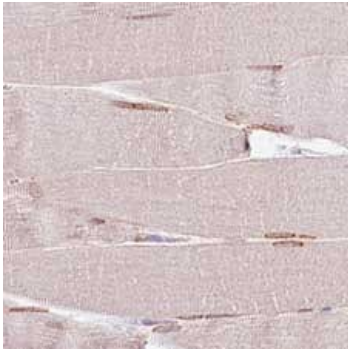
Immunohistochemical analysis of Human cerebral cortex tissue labeling PCM1 with ab154142 at 1/200 dilution.

Immunohistochemistry (Formalin/PFA-fixed paraffin-embedded sections) - Anti-PCM1 antibody [CL0206] (ab154142)



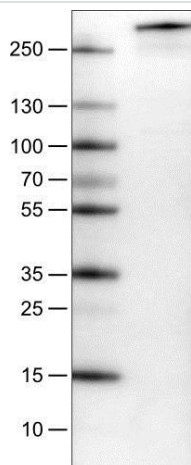
Immunohistochemical analysis of Human fallopian tube tissue labeling PCM1 with ab154142 at 1/200 dilution.

Immunohistochemistry (Formalin/PFA-fixed paraffin-embedded sections) - Anti-PCM1 antibody [CL0206] (ab154142)



Immunohistochemical analysis of Human dtriated muscle tissue labeling PCM1 with ab154142 at 1/200 dilution.

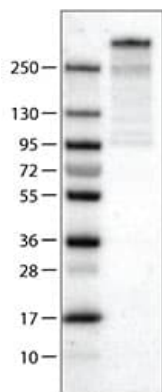
Immunohistochemistry (Formalin/PFA-fixed paraffin-embedded sections) - Anti-PCM1 antibody [CL0206] (ab154142)



Anti-PCM1 antibody [CL0206] (ab154142) at 1/1000 dilution + Human cell line U-251

Predicted band size: 229 kDa

Western blot - Anti-PCM1 antibody [CL0206] (ab154142)



Western blot - Anti-PCM1 antibody [CL0206]
(ab154142)

Anti-PCM1 antibody [CL0206] (ab154142) at 1/1000 dilution + RT4
cell lysate

Predicted band size: 229 kDa

Please note: All products are "FOR RESEARCH USE ONLY. NOT FOR USE IN DIAGNOSTIC PROCEDURES"

Our Abpromise to you: Quality guaranteed and expert technical support

- Replacement or refund for products not performing as stated on the datasheet
- Valid for 12 months from date of delivery
- Response to your inquiry within 24 hours
- We provide support in Chinese, English, French, German, Japanese and Spanish
- Extensive multi-media technical resources to help you
- We investigate all quality concerns to ensure our products perform to the highest standards

If the product does not perform as described on this datasheet, we will offer a refund or replacement. For full details of the Abpromise, please visit <https://www.abcam.com/abpromise> or contact our technical team.

Terms and conditions

- Guarantee only valid for products bought direct from Abcam or one of our authorized distributors