



Anti-PCOLCE antibody ab220040

2 Images

Overview

Product name	Anti-PCOLCE antibody
Description	Rabbit polyclonal to PCOLCE
Host species	Rabbit
Tested applications	Suitable for: ICC/IF, WB
Species reactivity	Reacts with: Human
Immunogen	Recombinant fragment corresponding to Human PCOLCE aa 250-400. Database link: Q15113
	<div>  Run BLAST with  Run BLAST with </div>
Positive control	ICC/IF: U-2 OS cells. WB: U-251 MG cell lysate, human plasma and tonsil tissue lysate.
General notes	<p>The Life Science industry has been in the grips of a reproducibility crisis for a number of years. Abcam is leading the way in addressing this with our range of recombinant monoclonal antibodies and knockout edited cell lines for gold-standard validation. Please check that this product meets your needs before purchasing.</p> <p>If you have any questions, special requirements or concerns, please send us an inquiry and/or contact our Support team ahead of purchase. Recommended alternatives for this product can be found below, along with publications, customer reviews and Q&As</p>

Properties

Form	Liquid
Storage instructions	Shipped at 4°C. Store at +4°C short term (1-2 weeks). Upon delivery aliquot. Store at -20°C long term. Avoid freeze / thaw cycle.
Storage buffer	pH: 7.20 Preservative: 0.02% Sodium azide Constituents: 40% Glycerol (glycerin, glycerine), 59% PBS
Purity	Immunogen affinity purified
Clonality	Polyclonal
Isotype	IgG

Applications

The Abpromise guarantee

Our **Abpromise guarantee** covers the use of ab220040 in the following tested applications.

The application notes include recommended starting dilutions; optimal dilutions/concentrations should be determined by the end user.

Application	Abreviews	Notes
ICC/IF		Use a concentration of 0.25 - 2 µg/ml.
WB		Use a concentration of 0.04 - 0.4 µg/ml. Predicted molecular weight: 48 kDa.

Target

Function

Binds to the C-terminal propeptide of type I procollagen and enhances procollagen C-proteinase activity.
C-terminal processed part of PCPE (CT-PCPE) may have an metalloproteinase inhibitory activity.

Sequence similarities

Contains 2 CUB domains.
Contains 1 NTR domain.

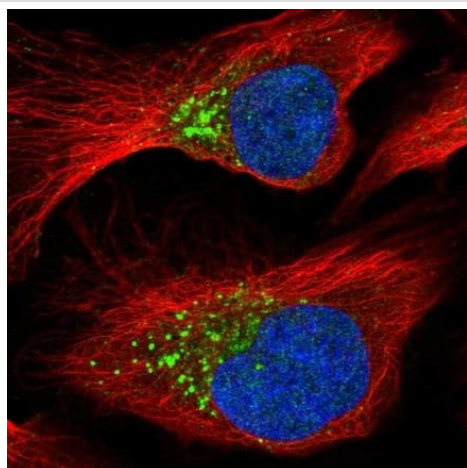
Post-translational modifications

C-terminally processed at multiple positions.

Cellular localization

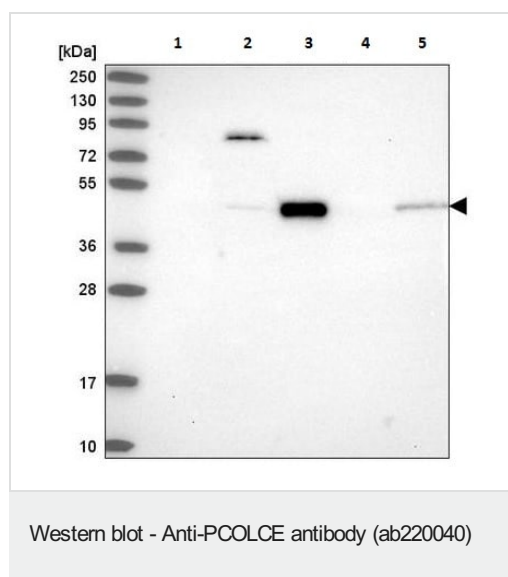
Secreted.

Images



Immunocytochemistry/ Immunofluorescence - Anti-PCOLCE antibody (ab220040)

Immunofluorescent analysis of formalin fixed, triton X-100 permeabilized U-2 OS cells labeling PCOLCE using ab220040 at 4 µg/ml (green).



All lanes : Anti-PCOLCE antibody (ab220040) at 1/100 dilution

Lane 1 : RT-4 cell lysate

Lane 2 : U-251 MG cell lysate

Lane 3 : Human plasma lysate

Lane 4 : Human liver tissue lysate

Lane 5 : Human tonsil tissue lysate

Predicted band size: 48 kDa

Please note: All products are "FOR RESEARCH USE ONLY. NOT FOR USE IN DIAGNOSTIC PROCEDURES"

Our Abpromise to you: Quality guaranteed and expert technical support

- Replacement or refund for products not performing as stated on the datasheet
- Valid for 12 months from date of delivery
- Response to your inquiry within 24 hours
- We provide support in Chinese, English, French, German, Japanese and Spanish
- Extensive multi-media technical resources to help you
- We investigate all quality concerns to ensure our products perform to the highest standards

If the product does not perform as described on this datasheet, we will offer a refund or replacement. For full details of the Abpromise, please visit <https://www.abcam.com/abpromise> or contact our technical team.

Terms and conditions

- Guarantee only valid for products bought direct from Abcam or one of our authorized distributors