

## Product datasheet

# Anti-PD-L1 antibody [SP142] - C-terminal, prediluted ab228463

Recombinant RabMAb

[21 References](#) [11 Images](#)

### Overview

<b>Product name</b>	Anti-PD-L1 antibody [SP142] - C-terminal, prediluted
<b>Description</b>	Rabbit monoclonal [SP142] to PD-L1 - C-terminal, prediluted
<b>Host species</b>	Rabbit
<b>Tested applications</b>	<b>Suitable for:</b> IHC-P
<b>Species reactivity</b>	<b>Reacts with:</b> Human
<b>Immunogen</b>	Synthetic peptide. This information is proprietary to Abcam and/or its suppliers.
<b>Positive control</b>	IHC-P: Human placenta, tonsil, lung squamous cell carcinoma, cervical squamous cell carcinoma, skin squamous cell carcinoma, Hodgkin's lymphoma, pancreatic adenocarcinoma and prostate adenocarcinoma tissues.
<b>General notes</b>	<b>This product is FOR RESEARCH USE ONLY. For commercial use, please contact <a href="mailto:partnerships@abcam.com">partnerships@abcam.com</a>.</b>

### Properties

<b>Form</b>	Liquid
<b>Storage instructions</b>	Shipped at 4°C. Store at +4°C. Do Not Freeze.
<b>Storage buffer</b>	pH: 7.60 Preservative: 0.1% Sodium azide Constituents: Tris buffered saline, 1% BSA
<b>Purity</b>	Protein A/G purified
<b>Purification notes</b>	Purified from TCS by protein A/G.
<b>Clonality</b>	Monoclonal
<b>Clone number</b>	SP142
<b>Isotype</b>	IgG

### Applications

## The Abpromise guarantee

Our **Abpromise guarantee** covers the use of ab228463 in the following tested applications.

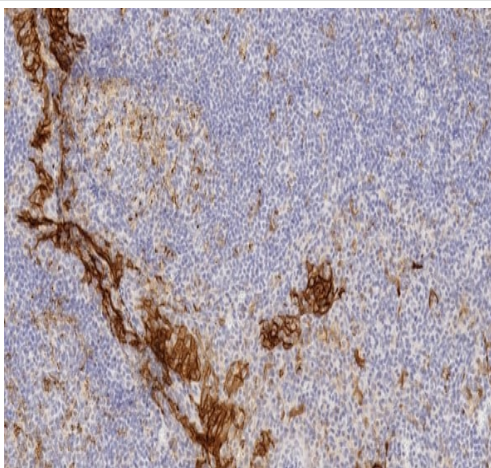
The application notes include recommended starting dilutions; optimal dilutions/concentrations should be determined by the end user.

Application	Abreviews	Notes
IHC-P		1/1. Ready to use.  Boil tissue section in EDTA buffer, pH 8.0 for 10 minutes followed by cooling at room temperature for 20 minutes.  Primary antibody incubation for 10 minutes at room temperature.

## Target

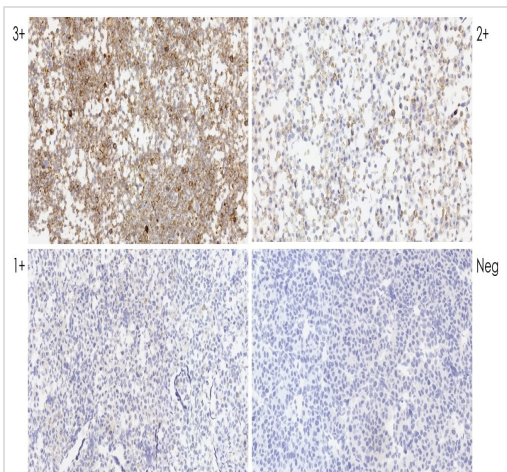
Function	Involved in the costimulatory signal, essential for T-cell proliferation and production of IL10 and IFNG, in an IL2-dependent and a PDCD1-independent manner. Interaction with PDCD1 inhibits T-cell proliferation and cytokine production.
Tissue specificity	Highly expressed in the heart, skeletal muscle, placenta and lung. Weakly expressed in the thymus, spleen, kidney and liver. Expressed on activated T- and B-cells, dendritic cells, keratinocytes and monocytes.
Sequence similarities	Belongs to the immunoglobulin superfamily. BTN/MOG family. Contains 1 Ig-like C2-type (immunoglobulin-like) domain. Contains 1 Ig-like V-type (immunoglobulin-like) domain.
Cellular localization	Cell membrane and Endomembrane system.

## Images



Immunohistochemistry (Formalin/PFA-fixed paraffin-embedded sections) - Anti-PD-L1 antibody [SP142] - C-terminal, prediluted (ab228463)

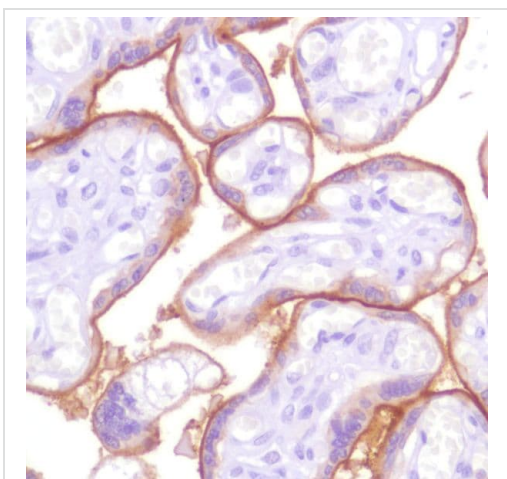
IHC image of **ab228462** staining PD-L1 in human tonsil formalin fixed paraffin embedded tissue sections\*, performed on a Leica BOND RX (standard Protocol F, Polymer Refine kit). The section was pre-treated using heat mediated antigen retrieval with EDTA buffer (pH9, epitope retrieval solution 2) for 30 mins at 98°C. The section was then incubated with **ab228462**, 1/400 working dilution, for 15 mins at room temperature and detected using an HRP conjugated compact polymer system for 8 minutes at room temperature. DAB was used as the chromogen for 10 minutes at room temperature. The section was then counterstained with hematoxylin, blued, dehydrated, cleared and mounted with DPX.



Immunohistochemistry (Formalin/PFA-fixed paraffin-embedded sections) - Anti-PD-L1 antibody [SP142] - C-terminal, prediluted (ab228463)

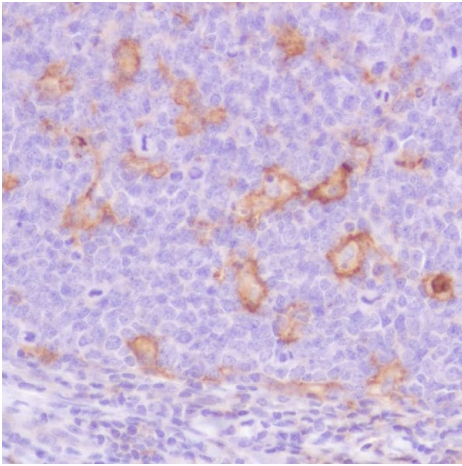
IHC image of **ab228462** staining PD-L1 in PD-L1 Dynamic Range Analyte Control formalin fixed paraffin embedded cell lines (**HistoCyte Laboratories**), performed on a Leica BOND RX (standard Protocol F, Polymer Refine kit). The section was pre-treated using heat mediated antigen retrieval with EDTA buffer (pH9, epitope retrieval solution 2) for 30 mins at 98°C. The section was then incubated with **ab228462**, 1/400 working dilution, for 15 mins at room temperature and detected using an HRP conjugated compact polymer system for 8 minutes at room temperature. DAB was used as the chromogen for 10 minutes at room temperature. The section was then counterstained with hematoxylin, blued, dehydrated, cleared and mounted with DPX.

For other IHC staining systems (automated and non-automated) customers should optimize variable parameters such as antigen retrieval conditions, primary antibody concentration and antibody incubation times.



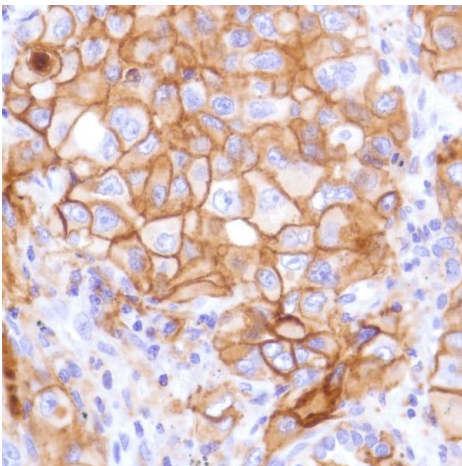
Immunohistochemistry (Formalin/PFA-fixed paraffin-embedded sections) - Anti-PD-L1 antibody [SP142] - C-terminal, prediluted (ab228463)

Formalin-fixed, paraffin-embedded human placenta tissue stained for PD-L1 using ab228463 in immunohistochemical analysis.



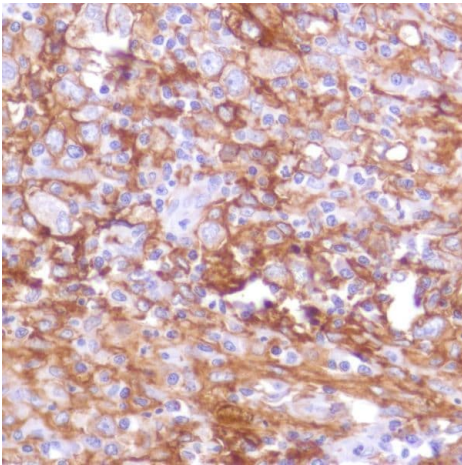
Formalin-fixed, paraffin-embedded human tonsil tissue stained for PD-L1 using ab228463 in immunohistochemical analysis.

Immunohistochemistry (Formalin/PFA-fixed paraffin-embedded sections) - Anti-PD-L1 antibody [SP142] - C-terminal, prediluted (ab228463)



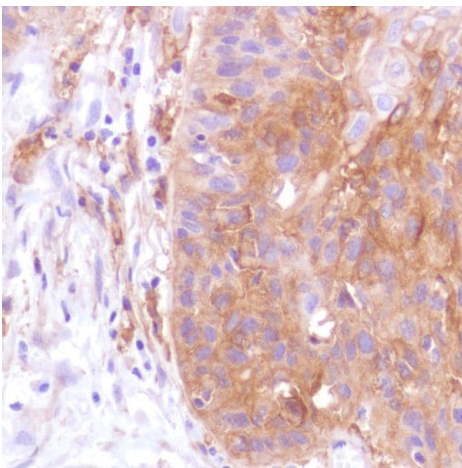
Formalin-fixed, paraffin-embedded human lung squamous cell carcinoma tissue stained for PD-L1 using ab228463 in immunohistochemical analysis.

Immunohistochemistry (Formalin/PFA-fixed paraffin-embedded sections) - Anti-PD-L1 antibody [SP142] - C-terminal, prediluted (ab228463)



Formalin-fixed, paraffin-embedded human Hodgkin's lymphoma tissue stained for PD-L1 using ab228463 in immunohistochemical analysis.

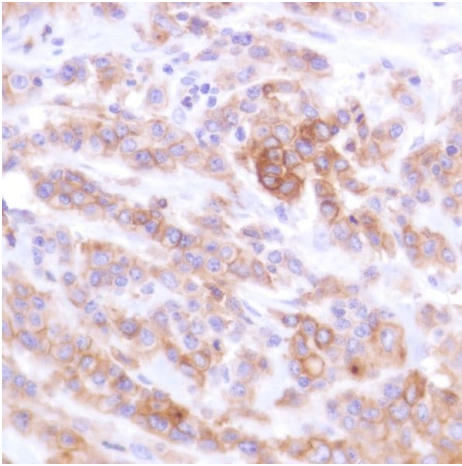
Immunohistochemistry (Formalin/PFA-fixed paraffin-embedded sections) - Anti-PD-L1 antibody [SP142] - C-terminal, prediluted (ab228463)



Formalin-fixed, paraffin-embedded human cervical squamous cell carcinoma tissue stained for PD-L1 using ab228463 in immunohistochemical analysis.

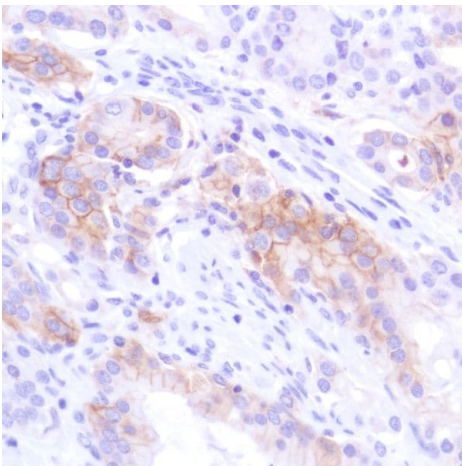
Immunohistochemistry (Formalin/PFA-fixed paraffin-embedded sections) - Anti-PD-L1 antibody [SP142] - C-terminal, prediluted (ab228463)





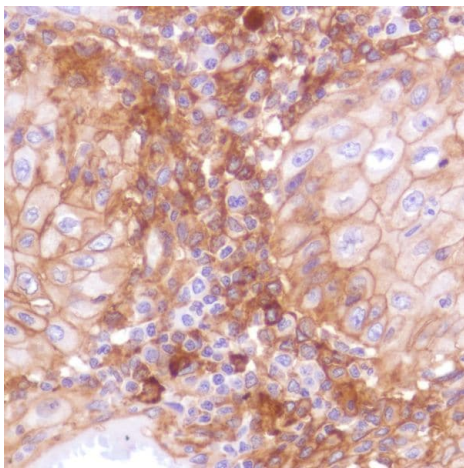
Formalin-fixed, paraffin-embedded human pancreatic adenocarcinoma tissue stained for PD-L1 using ab228463 in immunohistochemical analysis.

Immunohistochemistry (Formalin/PFA-fixed paraffin-embedded sections) - Anti-PD-L1 antibody [SP142] - C-terminal, prediluted (ab228463)



Formalin-fixed, paraffin-embedded human prostate adenocarcinoma tissue stained for PD-L1 using ab228463 in immunohistochemical analysis.

Immunohistochemistry (Formalin/PFA-fixed paraffin-embedded sections) - Anti-PD-L1 antibody [SP142] - C-terminal, prediluted (ab228463)



Formalin-fixed, paraffin-embedded human skin squamous cell carcinoma tissue stained for PD-L1 using ab228463 in immunohistochemical analysis.

Immunohistochemistry (Formalin/PFA-fixed paraffin-embedded sections) - Anti-PD-L1 antibody [SP142] - C-terminal, prediluted (ab228463)

Why choose a recombinant antibody?



**Research with confidence**  
Consistent and reproducible results



**Long-term and scalable supply**  
Recombinant technology



**Success from the first experiment**  
Confirmed specificity



**Ethical standards compliant**  
Animal-free production

Anti-PD-L1 antibody [SP142] - C-terminal, prediluted (ab228463)

**Please note:** All products are "FOR RESEARCH USE ONLY. NOT FOR USE IN DIAGNOSTIC PROCEDURES"

### Our Abpromise to you: Quality guaranteed and expert technical support

- Replacement or refund for products not performing as stated on the datasheet
- Valid for 12 months from date of delivery
- Response to your inquiry within 24 hours
- We provide support in Chinese, English, French, German, Japanese and Spanish
- Extensive multi-media technical resources to help you

- We investigate all quality concerns to ensure our products perform to the highest standards

If the product does not perform as described on this datasheet, we will offer a refund or replacement. For full details of the Abpromise, please visit <https://www.abcam.com/abpromise> or contact our technical team.

### **Terms and conditions**

---

- Guarantee only valid for products bought direct from Abcam or one of our authorized distributors