

## Product datasheet

# Anti-PD1 antibody [EH12.2H7] - Low endotoxin, Azide free ab234159

[1 Image](#)

### Overview

---

<b>Product name</b>	Anti-PD1 antibody [EH12.2H7] - Low endotoxin, Azide free
<b>Description</b>	Mouse monoclonal [EH12.2H7] to PD1 - Low endotoxin, Azide free
<b>Host species</b>	Mouse
<b>Tested applications</b>	<b>Suitable for:</b> Flow Cyt
<b>Species reactivity</b>	<b>Reacts with:</b> Human, Non human primates
<b>Immunogen</b>	Recombinant fragment corresponding to Human PD1.
<b>Epitope</b>	Extracellular
<b>Positive control</b>	Flow Cytometry: PHA-activated (3 days) human PBMC.
<b>General notes</b>	<p>The Life Science industry has been in the grips of a reproducibility crisis for a number of years. Abcam is leading the way in addressing this with our range of recombinant monoclonal antibodies and knockout edited cell lines for gold-standard validation. Please check that this product meets your needs before purchasing.</p> <p>If you have any questions, special requirements or concerns, please send us an inquiry and/or contact our Support team ahead of purchase. Recommended alternatives for this product can be found below, along with publications, customer reviews and Q&amp;As</p>

### Properties

---

<b>Form</b>	Liquid
<b>Storage instructions</b>	Shipped at 4°C. Store at +4°C short term (1-2 weeks). Upon delivery aliquot. Store at -20°C long term. Avoid freeze / thaw cycle.
<b>Storage buffer</b>	pH: 7.40 Constituent: PBS
<b>Carrier free</b>	Yes
<b>Purity</b>	Protein A purified
<b>Purification notes</b>	Purity is > 95% by SDS-PAGE. Endotoxin level is less than 0.01 EU/μg of the protein, as determined by the LAL test.
<b>Clonality</b>	Monoclonal

Clone number EH12.2H7  
Isotype IgG1

## Applications

**The Abpromise guarantee** Our **Abpromise guarantee** covers the use of ab234159 in the following tested applications. The application notes include recommended starting dilutions; optimal dilutions/concentrations should be determined by the end user.

Application	Abreviews	Notes
Flow Cyt		Use a concentration of 1 - 4 µg/ml.

## Target

**Function** Possible cell death inducer, in association with other factors.

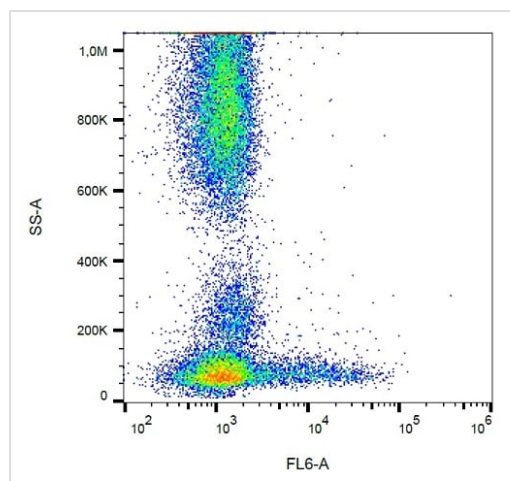
**Involvement in disease** Genetic variation in PDCD1 is associated with susceptibility to systemic lupus erythematosus type 2 (SLEB2) [MIM:605218]. Systemic lupus erythematosus is a chronic, inflammatory and often febrile multisystemic disorder of connective tissue. It affects principally the skin, joints, kidneys and serosal membranes. It is thought to represent a failure of the regulatory mechanisms of the autoimmune system.

**Sequence similarities** Contains 1 Ig-like V-type (immunoglobulin-like) domain.

**Developmental stage** Induced at programmed cell death.

**Cellular localization** Membrane.

## Images



Surface staining of PHA-activated (3 days) human PBMC using ab234159.

Flow Cytometry - Anti-PD1 antibody [EH12.2H7] - Low endotoxin, Azide free (ab234159)

**Please note:** All products are "FOR RESEARCH USE ONLY. NOT FOR USE IN DIAGNOSTIC PROCEDURES"

## **Our Abpromise to you: Quality guaranteed and expert technical support**

---

- Replacement or refund for products not performing as stated on the datasheet
- Valid for 12 months from date of delivery
- Response to your inquiry within 24 hours
  
- We provide support in Chinese, English, French, German, Japanese and Spanish
- Extensive multi-media technical resources to help you
- We investigate all quality concerns to ensure our products perform to the highest standards

If the product does not perform as described on this datasheet, we will offer a refund or replacement. For full details of the Abpromise, please visit <https://www.abcam.com/abpromise> or contact our technical team.

## **Terms and conditions**

---

- Guarantee only valid for products bought direct from Abcam or one of our authorized distributors