

Anti-PD1 antibody [NAT105] - Rabbit IgG (Chimeric) - BSA and Azide free ab233091

Recombinant

3 Images

Overview

Product name	Anti-PD1 antibody [NAT105] - Rabbit IgG (Chimeric) - BSA and Azide free
Description	Rabbit monoclonal [NAT105] to PD1 - Chimeric – BSA and Azide free
Host species	Rabbit
Tested applications	Suitable for: Flow Cyt (Intra), WB, IP, IHC-P
Species reactivity	Reacts with: Human
Immunogen	Tissue, cells or virus corresponding to Human PD1. Specifically, human YT cells (NK-like leukemia cell line) that express PD1. Database link: Q15116
Positive control	IHC-P: Human tonsil tissue. Flow Cyt (intra): MOLT-4 cells treated with 500 ng/ml Ionomycin and 10 ng/ml Phorbol-12-myristate-13-acetate (PMA) for 24 hours.
General notes	<p>ab233091 is the carrier-free version of ab216352.</p> <p>This rabbit monoclonal chimeric antibody has been engineered from the mouse monoclonal parent antibody Anti-PD1 antibody [NAT105] (ab52587). By necessity, some mouse sequence is retained as part of the variable domain. We recommend using an Fc-directed, preadsorbed secondary antibody if multiplexing with mouse monoclonals. For example, ab150097 (AF488), ab150100 (AF594), ab150099 (AF647) or ab98467 (HRP).</p> <p>Our carrier-free antibodies are typically supplied in a PBS-only formulation, purified and free of BSA, sodium azide and glycerol. The carrier-free buffer and high concentration allow for increased conjugation efficiency.</p> <p>This conjugation-ready format is designed for use with fluorochromes, metal isotopes, oligonucleotides, and enzymes, which makes them ideal for antibody labelling, functional and cell-based assays, flow-based assays (e.g. mass cytometry) and Multiplex Imaging applications.</p> <p>Use our conjugation kits for antibody conjugates that are ready-to-use in as little as 20 minutes with <1 minute hands-on-time and 100% antibody recovery: available for fluorescent dyes, HRP, biotin and gold.</p> <p>This product is compatible with the Maxpar[®] Antibody Labeling Kit from Fluidigm, without the need for antibody preparation. Maxpar[®] is a trademark of Fluidigm Canada Inc.</p>

Properties

Form	Liquid
Storage instructions	Shipped at 4°C. Store at +4°C. Do Not Freeze.
Storage buffer	pH: 7.2 Constituent: PBS
Carrier free	Yes
Purity	Protein A purified
Clonality	Monoclonal
Clone number	NAT105
Isotype	IgG

Applications

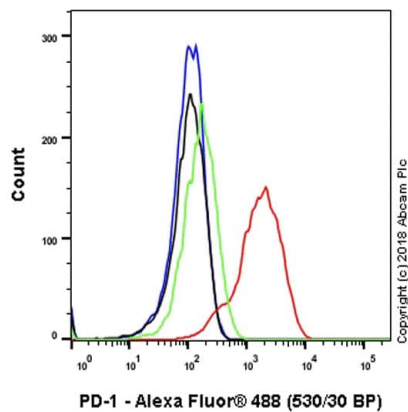
The Abpromise guarantee Our **Abpromise guarantee** covers the use of ab233091 in the following tested applications. The application notes include recommended starting dilutions; optimal dilutions/concentrations should be determined by the end user.

Application	Abreviews	Notes
Flow Cyt (Intra)		Use at an assay dependent concentration.
WB		Use at an assay dependent concentration. Detects a band of approximately 50-55 kDa (predicted molecular weight: 32 kDa).
IP		Use at an assay dependent concentration.
IHC-P		Use at an assay dependent concentration. Perform heat mediated antigen retrieval before commencing with IHC staining protocol.

Target

Function	Possible cell death inducer, in association with other factors.
Involvement in disease	Genetic variation in PDCD1 is associated with susceptibility to systemic lupus erythematosus type 2 (SLEB2) [MIM:605218]. Systemic lupus erythematosus is a chronic, inflammatory and often febrile multisystemic disorder of connective tissue. It affects principally the skin, joints, kidneys and serosal membranes. It is thought to represent a failure of the regulatory mechanisms of the autoimmune system.
Sequence similarities	Contains 1 Ig-like V-type (immunoglobulin-like) domain.
Developmental stage	Induced at programmed cell death.
Cellular localization	Membrane.

Images



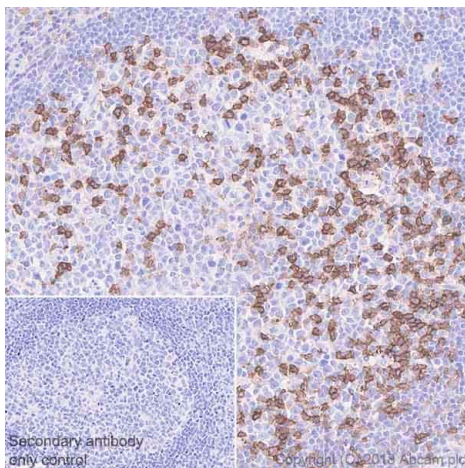
Flow Cytometry (Intracellular) - Anti-PD1 antibody [NAT105] - Rabbit IgG (Chimeric) - BSA and Azide free (ab233091)

Intracellular flow cytometric analysis of MOLT-4

(human lymphoblastic leukemia cell line) cell line treated with 500 ng/ml Ionomycin and 10 ng/ml Phorbol-12-myristate-13-acetate (PMA) for 24 hours (Red) or Untreated control (Green) labeling PD1 with **ab216352** at 1/600 dilution compared with a Rabbit IgG, monoclonal [EPR25A] - Isotype Control (**ab172730**) (black) and an unlabeled control (cells without incubation with primary antibody and secondary antibody) (blue). Goat Anti-Rabbit IgG H&L (Alexa Fluor® 488) (**ab150077**) at 1/2000 dilution was used as the secondary antibody.

Gated on viable cells.

This data was developed using the same antibody clone in a different buffer formulation containing PBS, BSA, glycerol, and sodium azide (**ab216352**).



Immunohistochemistry (Formalin/PFA-fixed paraffin-embedded sections) - Anti-PD1 antibody [NAT105] - Rabbit IgG (Chimeric) - BSA and Azide free (ab233091)

Immunohistochemical analysis of paraffin-embedded human tonsil tissue labeling PD1 with **ab216352** at 1/50 dilution, followed by Rabbit specific IHC polymer detection kit HRP/DAB (**ab209101**) Ready to use. Positive staining on T cells of human tonsil germinal center (PMID: 20087161; PMID: 17640856). Counter stained with hematoxylin.

Secondary antibody only control: Used PBS instead of primary antibody, secondary antibody is Rabbit specific IHC polymer detection kit HRP/DAB (**ab209101**) Ready to use.

This data was developed using the same antibody clone in a different buffer formulation containing PBS, BSA, glycerol, and sodium azide (**ab216352**).

Heat mediated antigen retrieval was performed before commencing with IHC staining protocol.

Why choose a recombinant antibody?



Research with confidence
Consistent and reproducible results



Long-term and scalable supply
Recombinant technology



Success from the first experiment
Confirmed specificity



Ethical standards compliant
Animal-free production

Anti-PD1 antibody [NAT105] - Rabbit IgG (Chimeric)

- BSA and Azide free (ab233091)

Please note: All products are "FOR RESEARCH USE ONLY. NOT FOR USE IN DIAGNOSTIC PROCEDURES"

Our Abpromise to you: Quality guaranteed and expert technical support

- Replacement or refund for products not performing as stated on the datasheet
- Valid for 12 months from date of delivery
- Response to your inquiry within 24 hours
- We provide support in Chinese, English, French, German, Japanese and Spanish
- Extensive multi-media technical resources to help you
- We investigate all quality concerns to ensure our products perform to the highest standards

If the product does not perform as described on this datasheet, we will offer a refund or replacement. For full details of the Abpromise, please visit <https://www.abcam.com/abpromise> or contact our technical team.

Terms and conditions

- Guarantee only valid for products bought direct from Abcam or one of our authorized distributors