

Product datasheet

Anti-PDCD10/CCM3 antibody ab180706

[2 References](#) [2 Images](#)

Overview

Product name	Anti-PDCD10/CCM3 antibody
Description	Rabbit polyclonal to PDCD10/CCM3
Host species	Rabbit
Tested applications	Suitable for: WB, IHC-P
Species reactivity	Reacts with: Mouse, Human
Immunogen	Synthetic peptide corresponding to Human PDCD10/CCM3. Database link: Q9BUL8
Positive control	Mouse fetal brain, HeLa and K562 cell extracts; Human renal cancer tissue.
General notes	<p>The Life Science industry has been in the grips of a reproducibility crisis for a number of years. Abcam is leading the way in addressing this with our range of recombinant monoclonal antibodies and knockout edited cell lines for gold-standard validation. Please check that this product meets your needs before purchasing.</p> <p>If you have any questions, special requirements or concerns, please send us an inquiry and/or contact our Support team ahead of purchase. Recommended alternatives for this product can be found below, along with publications, customer reviews and Q&As</p>

Properties

Form	Liquid
Storage instructions	Shipped at 4°C. Store at +4°C short term (1-2 weeks). Upon delivery aliquot. Store at -20°C long term. Avoid freeze / thaw cycle.
Storage buffer	pH: 7.30 Preservative: 0.02% Sodium azide Constituents: 49% PBS, 50% Glycerol
Purity	Immunogen affinity purified
Clonality	Polyclonal
Isotype	IgG

Applications

The Abpromise guarantee

Our **Abpromise guarantee** covers the use of ab180706 in the following tested applications.

The application notes include recommended starting dilutions; optimal dilutions/concentrations should be determined by the end user.

Application	Abreviews	Notes
WB		1/500 - 1/1000. Predicted molecular weight: 25 kDa.
IHC-P		1/50 - 1/100. ab171870 - Rabbit polyclonal IgG, is suitable for use as an isotype control with this antibody.

Target

Function

Promotes cell proliferation. Modulates apoptotic pathways. Increases mitogen-activated protein kinase activity and MST4 activity. Important for cell migration, and for normal structure and assembly of the Golgi complex. Important for KDR/VEGFR2 signaling. Increases the stability of KDR/VEGFR2 and prevents its breakdown. Required for normal cardiovascular development. Required for normal angiogenesis, vasculogenesis and hematopoiesis during embryonic development.

Tissue specificity

Ubiquitous.

Involvement in disease

Defects in PDCD10 are the cause of cerebral cavernous malformations type 3 (CCM3) [MIM:603285]. Cerebral cavernous malformations (CCMs) are congenital vascular anomalies of the central nervous system that can result in hemorrhagic stroke, seizures, recurrent headaches, and focal neurologic deficits. CCMs have an incidence of 0.1%-0.5% in the general population and usually present clinically during the 3rd to 5th decade of life. The lesions are characterized by grossly enlarged blood vessels consisting of a single layer of endothelium and without any intervening neural tissue, ranging in diameter from a few millimeters to several centimeters.

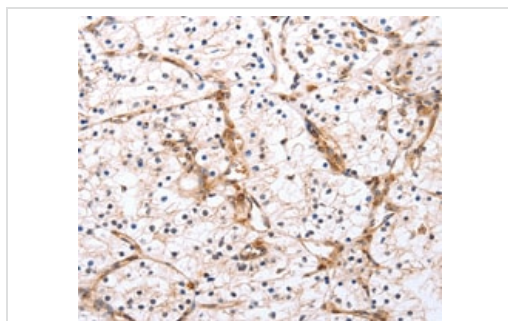
Sequence similarities

Belongs to the PDCD10 family.

Cellular localization

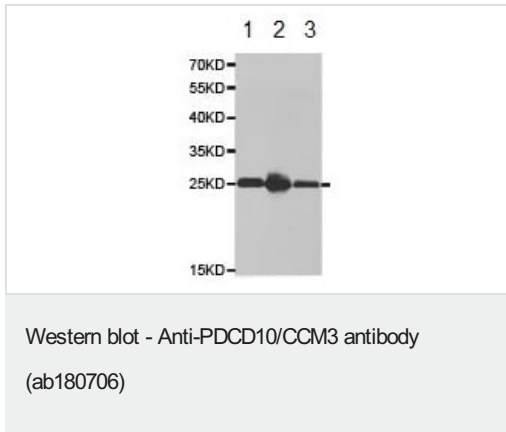
Cytoplasm. Golgi apparatus membrane. Cell membrane. Partially co-localizes with endogenous PXN at the leading edges of migrating cells.

Images



Immunohistochemical analysis of paraffin-embedded Human renal cancer tissue labeling PDCD10/CCM3 with ab180706 at 1/50 dilution.

Immunohistochemistry (Formalin/PFA-fixed paraffin-embedded sections) - Anti-PDCD10/CCM3 antibody (ab180706)



All lanes : Anti-PDCD10/CCM3 antibody (ab180706) at 1/500 dilution

Lane 1 : Mouse fetal brain cell extract

Lane 2 : HeLa cell extract

Lane 3 : K562 cell extract

Predicted band size: 25 kDa

Please note: All products are "FOR RESEARCH USE ONLY. NOT FOR USE IN DIAGNOSTIC PROCEDURES"

Our Abpromise to you: Quality guaranteed and expert technical support

- Replacement or refund for products not performing as stated on the datasheet
- Valid for 12 months from date of delivery
- Response to your inquiry within 24 hours
- We provide support in Chinese, English, French, German, Japanese and Spanish
- Extensive multi-media technical resources to help you
- We investigate all quality concerns to ensure our products perform to the highest standards

If the product does not perform as described on this datasheet, we will offer a refund or replacement. For full details of the Abpromise, please visit <https://www.abcam.com/abpromise> or contact our technical team.

Terms and conditions

- Guarantee only valid for products bought direct from Abcam or one of our authorized distributors