


Product datasheet

Anti-PDCD5 antibody ab126213

[2 Images](#)

Overview

Product name	Anti-PDCD5 antibody
Description	Rabbit polyclonal to PDCD5
Host species	Rabbit
Tested applications	Suitable for: WB, ICC/IF
Species reactivity	Reacts with: Human Predicted to work with: Mouse, Rat, Cow 
Immunogen	Recombinant fragment, corresponding to a region within amino acids 1-75 of Human PDCD5 (UniProt O14737).
Positive control	WB: HeLa and HCT116 cell lysates; A549 whole cell lysate ICC/IF: HeLa cells
General notes	<p>The Life Science industry has been in the grips of a reproducibility crisis for a number of years. Abcam is leading the way in addressing this with our range of recombinant monoclonal antibodies and knockout edited cell lines for gold-standard validation. Please check that this product meets your needs before purchasing.</p> <p>If you have any questions, special requirements or concerns, please send us an inquiry and/or contact our Support team ahead of purchase. Recommended alternatives for this product can be found below, along with publications, customer reviews and Q&As</p>

Properties

Form	Liquid
Storage instructions	Shipped at 4°C. Upon delivery aliquot and store at -20°C or -80°C. Avoid repeated freeze / thaw cycles.
Storage buffer	pH: 7.00 Preservative: 0.01% Thimerosal (merthiolate) Constituents: 1.21% Tris, 0.75% Glycine, 20% Glycerol (glycerin, glycerine)
Purity	Immunogen affinity purified
Clonality	Polyclonal
Isotype	IgG

Applications

The Abpromise guarantee

Our **Abpromise guarantee** covers the use of ab126213 in the following tested applications.

The application notes include recommended starting dilutions; optimal dilutions/concentrations should be determined by the end user.

Application	Abreviews	Notes
WB		1/500 - 1/3000. Predicted molecular weight: 14 kDa.
ICC/IF		1/100 - 1/500.

Target

Function

May function in the process of apoptosis.

Tissue specificity

Widely expressed. Highest levels in heart, testis, kidney, pituitary gland, adrenal gland and placenta.

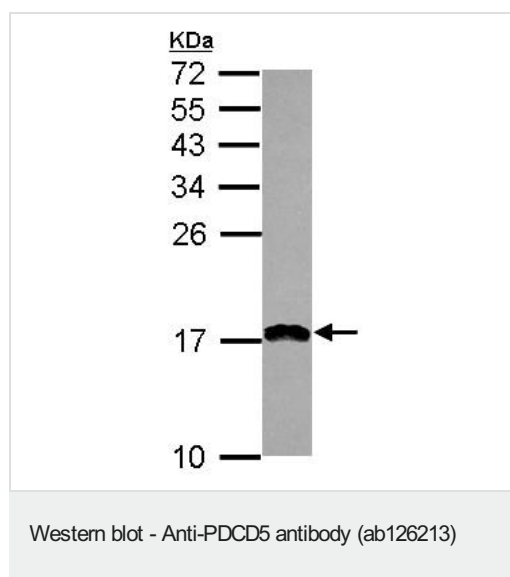
Sequence similarities

Belongs to the PDCD5 family.

Developmental stage

Expression in fetal tissues is significantly lower than in adult tissues.

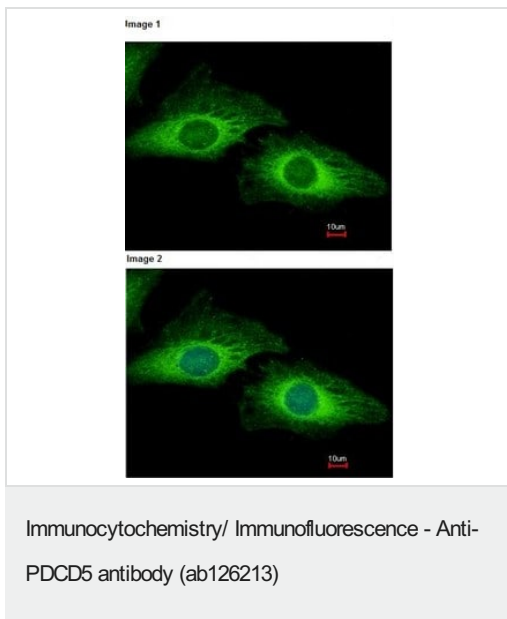
Images



Anti-PDCD5 antibody (ab126213) at 1/1000 dilution + A549 whole cell lysate at 30 μ g

Predicted band size: 14 kDa

15% SDS PAGE



ab126213, at a 1/500 dilution, staining PDCD5 in methanol fixed HeLa cells by Immunofluorescence.

Image 2 (lower panel) shows costaining with Hoechst 33342.

Please note: All products are "FOR RESEARCH USE ONLY. NOT FOR USE IN DIAGNOSTIC PROCEDURES"

Our Abpromise to you: Quality guaranteed and expert technical support

- Replacement or refund for products not performing as stated on the datasheet
- Valid for 12 months from date of delivery
- Response to your inquiry within 24 hours
- We provide support in Chinese, English, French, German, Japanese and Spanish
- Extensive multi-media technical resources to help you
- We investigate all quality concerns to ensure our products perform to the highest standards

If the product does not perform as described on this datasheet, we will offer a refund or replacement. For full details of the Abpromise, please visit <https://www.abcam.com/abpromise> or contact our technical team.

Terms and conditions

- Guarantee only valid for products bought direct from Abcam or one of our authorized distributors