


Product datasheet

Anti-PDCD6/ALG-2 antibody [EP3259] ab109181

KO VALIDATED Recombinant RabMAB[®]

[4 References](#) [5 Images](#)

Overview

Product name	Anti-PDCD6/ALG-2 antibody [EP3259]
Description	Rabbit monoclonal [EP3259] to PDCD6/ALG-2
Host species	Rabbit
Tested applications	Suitable for: WB, IHC-P Unsuitable for: Flow Cyt, ICC/IF or IP
Species reactivity	Reacts with: Human Predicted to work with: Mouse, Rat 
Immunogen	Synthetic peptide. This information is proprietary to Abcam and/or its suppliers.
Positive control	WB: Daudi, Jurkat, HeLa and 293T cell lysates. IHC-P: Human hepatoma and Human lung adenocarcinoma.
General notes	This product is a recombinant monoclonal antibody, which offers several advantages including: <ul style="list-style-type: none">- High batch-to-batch consistency and reproducibility- Improved sensitivity and specificity- Long-term security of supply- Animal-free production For more information see here . Our RabMAB [®] technology is a patented hybridoma-based technology for making rabbit monoclonal antibodies. For details on our patents, please refer to RabMAB[®] patents .

Properties

Form	Liquid
Storage instructions	Shipped at 4°C. Store at -20°C. Stable for 12 months at -20°C.
Storage buffer	pH: 7.20 Preservative: 0.01% Sodium azide Constituents: 9% PBS, 40% Glycerol (glycerin, glycerine), 0.05% BSA, 50% Tissue culture supernatant
Purity	Protein A purified
Clonality	Monoclonal

Clone number EP3259
Isotype IgG

Applications

The Abpromise guarantee Our **Abpromise guarantee** covers the use of ab109181 in the following tested applications. The application notes include recommended starting dilutions; optimal dilutions/concentrations should be determined by the end user.

Application	Abreviews	Notes
WB		1/1000 - 1/2000. Detects a band of approximately 22 kDa (predicted molecular weight: 21 kDa).
IHC-P		1/100 - 1/250. Perform heat mediated antigen retrieval with citrate buffer pH 6 before commencing with IHC staining protocol.

Application notes Is unsuitable for Flow Cyt, ICC/IF or IP.

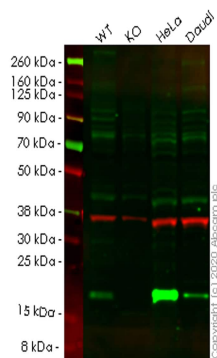
Target

Function Calcium-binding protein required for T-cell receptor-, Fas-, and glucocorticoid-induced cell death. May mediate Ca(2+)-regulated signals along the death pathway (By similarity). Calcium-dependent adapter necessary for the association between PDCD6IP and TSG101. Interaction with DAPK1 can accelerate apoptotic cell death by increasing caspase-3 activity. May inhibit KDR/VEGFR2-dependent angiogenesis; the function involves inhibition of VEGF-induced phosphorylation of the Akt signaling pathway. Seems to play a role in the regulation of the distribution and function of MCOLN1 in the endosomal pathway. Isoform 2 has a lower Ca(2+) affinity than isoform 1. Isoform 1 and, to a lesser extent, isoform 2, can stabilize SHISA5.

Sequence similarities Contains 5 EF-hand domains.

Cellular localization Nucleus membrane. Endoplasmic reticulum membrane. Nucleus. Endosome. Interaction with RBM22 induces relocalization from the cytoplasm to the nucleus. Translocated from the cytoplasm to the nucleus after heat shock cell treatment. Accumulates in cytoplasmic vesicle-like organelles after heat shock treatment, which may represent stress granules.

Images



Western blot - Anti-PDCD6/ALG-2 antibody [EP3259] (ab109181)

All lanes : Anti-PDCD6/ALG-2 antibody [EP3259] (ab109181) at 1/1000 dilution

Lane 1 : Wild-type HEK293T cell lysate

Lane 2 : PDCD6 knockout HEK293T cell lysate

Lane 3 : HeLa cell lysate

Lane 4 : Daudi cell lysate

Lysates/proteins at 20 µg per lane.

Secondary

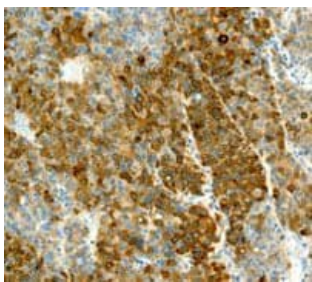
All lanes : Goat anti-Rabbit IgG H&L (IRDye® 800CW) preadsorbed ([ab216773](#)) at 1/10000 dilution

Predicted band size: 21 kDa

Observed band size: 22 kDa

Lanes 1-4: Merged signal (red and green). Green - ab109181 observed at 22 kDa. Red - loading control [ab8245](#) observed at 36 kDa.

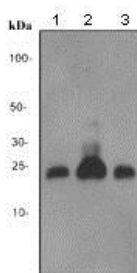
ab109181 Anti-PDCD6/ALG-2 antibody [EP3259] was shown to specifically react with PDCD6/ALG-2 in wild-type HEK293T cells. Loss of signal was observed when knockout cell line [ab266323](#) (knockout cell lysate [ab258570](#)) was used. Wild-type and PDCD6/ALG-2 knockout samples were subjected to SDS-PAGE. ab109181 and Anti-GAPDH antibody [6C5] - Loading Control ([ab8245](#)) were incubated overnight at 4°C at 1 in 1000 dilution and 1 in 20000 dilution respectively. Blots were developed with Goat anti-Rabbit IgG H&L (IRDye® 800CW) preadsorbed ([ab216773](#)) and Goat anti-Mouse IgG H&L (IRDye® 680RD) preadsorbed ([ab216776](#)) secondary antibodies at 1 in 20000 dilution for 1 hour at room temperature before imaging.



Immunohistochemistry (Formalin/PFA-fixed paraffin-embedded sections) - Anti-PDCD6/ALG-2 antibody [EP3259] (ab109181)

Immunohistochemical analysis of paraffin-embedded Human hepatoma using ab109181 at 1/100.

Perform heat mediated antigen retrieval with citrate buffer pH 6 before commencing with IHC staining protocol.



Western blot - Anti-PDCD6/ALG-2 antibody [EP3259] (ab109181)

All lanes : Anti-PDCD6/ALG-2 antibody [EP3259] (ab109181) at 1/1000 dilution

Lane 1 : Jurkat cell lysate

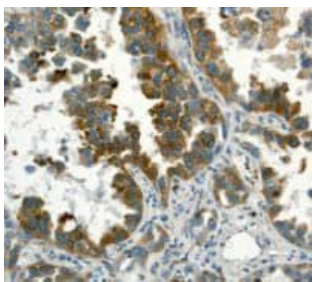
Lane 2 : HeLa cell lysate

Lane 3 : 293T cell lysate

Lysates/proteins at 10 µg per lane.

Predicted band size: 21 kDa

Observed band size: 22 kDa







Immunohistochemistry (Formalin/PFA-fixed paraffin-embedded sections) - Anti-PDCD6/ALG-2 antibody [EP3259] (ab109181)

Immunohistochemical analysis of paraffin-embedded Human lung adenocarcinoma using ab109181 at 1/100.

Perform heat mediated antigen retrieval with citrate buffer pH 6 before commencing with IHC staining protocol.

Why choose a recombinant antibody?

 <p>Research with confidence Consistent and reproducible results</p>	 <p>Long-term and scalable supply Recombinant technology</p>
 <p>Success from the first experiment Confirmed specificity</p>	 <p>Ethical standards compliant Animal-free production</p>

Anti-PDCD6/ALG-2 antibody [EP3259] (ab109181)

Please note: All products are "FOR RESEARCH USE ONLY. NOT FOR USE IN DIAGNOSTIC PROCEDURES"

Our Abpromise to you: Quality guaranteed and expert technical support

- Replacement or refund for products not performing as stated on the datasheet
- Valid for 12 months from date of delivery
- Response to your inquiry within 24 hours
- We provide support in Chinese, English, French, German, Japanese and Spanish
- Extensive multi-media technical resources to help you
- We investigate all quality concerns to ensure our products perform to the highest standards

If the product does not perform as described on this datasheet, we will offer a refund or replacement. For full details of the Abpromise, please visit <https://www.abcam.com/abpromise> or contact our technical team.

Terms and conditions

- Guarantee only valid for products bought direct from Abcam or one of our authorized distributors