

## Product datasheet

### Anti-PDE10A antibody [EPR22383] ab227829

**KO VALIDATED** Recombinant RabMAb

[1 References](#) [9 Images](#)

#### Overview

<b>Product name</b>	Anti-PDE10A antibody [EPR22383]
<b>Description</b>	Rabbit monoclonal [EPR22383] to PDE10A
<b>Host species</b>	Rabbit
<b>Tested applications</b>	<b>Suitable for:</b> WB, IHC-Fr, IP <b>Unsuitable for:</b> Flow Cyt, ICC/IF or IHC-P
<b>Species reactivity</b>	<b>Reacts with:</b> Mouse, Rat, Human
<b>Immunogen</b>	Synthetic peptide. This information is proprietary to Abcam and/or its suppliers.
<b>Positive control</b>	WB: HeLa whole cell lysate; Wild-type HAP1 whole cell lysate; Human, mouse and rat brain lysates; Mouse testis lysate. IHC-Fr: Mouse and rat brain tissues. IP: HeLa whole cell lysate.
<b>General notes</b>	This product is a recombinant monoclonal antibody, which offers several advantages including: <ul style="list-style-type: none"> <li>- High batch-to-batch consistency and reproducibility</li> <li>- Improved sensitivity and specificity</li> <li>- Long-term security of supply</li> <li>- Animal-free production</li> </ul> For more information <a href="#">see here</a> . Our RabMAb <sup>®</sup> technology is a patented hybridoma-based technology for making rabbit monoclonal antibodies. For details on our patents, please refer to <a href="#">RabMAb<sup>®</sup> patents</a> .

#### Properties

<b>Form</b>	Liquid
<b>Storage instructions</b>	Shipped at 4°C. Store at +4°C short term (1-2 weeks). Upon delivery aliquot. Store at -20°C long term. Avoid freeze / thaw cycle.
<b>Storage buffer</b>	pH: 7.2 Preservative: 0.01% Sodium azide Constituents: PBS, 40% Glycerol (glycerin, glycerine), 0.05% BSA
<b>Purity</b>	Protein A purified
<b>Clonality</b>	Monoclonal
<b>Clone number</b>	EPR22383

Isotype

IgG

## Applications

---

### The Abpromise guarantee

Our **Abpromise guarantee** covers the use of ab227829 in the following tested applications.

The application notes include recommended starting dilutions; optimal dilutions/concentrations should be determined by the end user.

Application	Abreviews	Notes
WB		1/1000. Detects a band of approximately 88 kDa (predicted molecular weight: 88 kDa).
IHC-Fr		1/2000. Perform heat mediated antigen retrieval using sodium citrate buffer (10mM citrate pH 6.0 + 0.05% Tween-20).
IP		1/30.

### Application notes

Is unsuitable for Flow Cyt, ICC/IF or IHC-P.

## Target

---

### Function

Plays a role in signal transduction by regulating the intracellular concentration of cyclic nucleotides. Can hydrolyze both cAMP and cGMP, but has higher affinity for cAMP and is more efficient with cAMP as substrate.

### Tissue specificity

Abundant in the putamen and caudate nucleus regions of brain and testis, moderately expressed in the thyroid gland, pituitary gland, thalamus and cerebellum.

### Pathway

Purine metabolism; 3',5'-cyclic AMP degradation; AMP from 3',5'-cyclic AMP: step 1/1.  
Purine metabolism; 3',5'-cyclic GMP degradation; GMP from 3',5'-cyclic GMP: step 1/1.

### Sequence similarities

Belongs to the cyclic nucleotide phosphodiesterase family.  
Contains 2 GAF domains.

### Domain

The tandem GAF domains bind cAMP, and regulate enzyme activity. The binding of cAMP stimulates enzyme activity.  
Composed of a C-terminal catalytic domain containing two divalent metal sites and an N-terminal regulatory domain which contains one cyclic nucleotide-binding region.

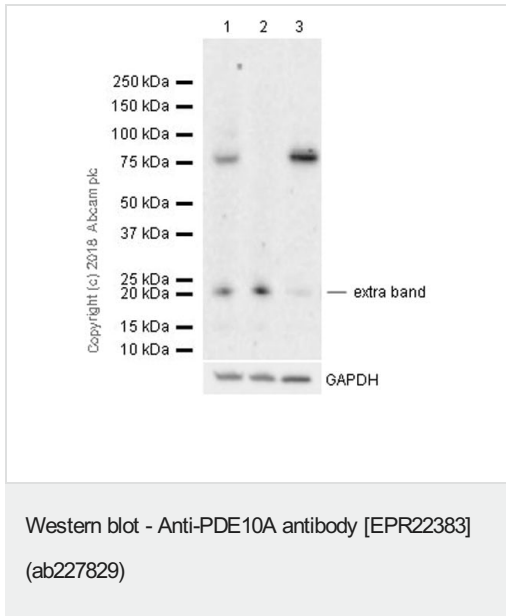
### Cellular localization

Cytoplasm. Located mostly to soluble cellular fractions.

---

## Images

---



**All lanes :** Anti-PDE10A antibody [EPR22383] (ab227829) at 1/1000 dilution

**Lane 1 :** Wild-type HAP1 whole cell lysate

**Lane 2 :** PDE10A knockout HAP1 whole cell lysate

**Lane 3 :** HeLa (human epithelial cell line from cervix adenocarcinoma) whole cell lysate

Lysates/proteins at 20 µg per lane.

#### Secondary

**All lanes :** Goat Anti-Rabbit IgG H&L (HRP) ([ab97051](#)) at 1/100000 dilution

**Predicted band size:** 88 kDa

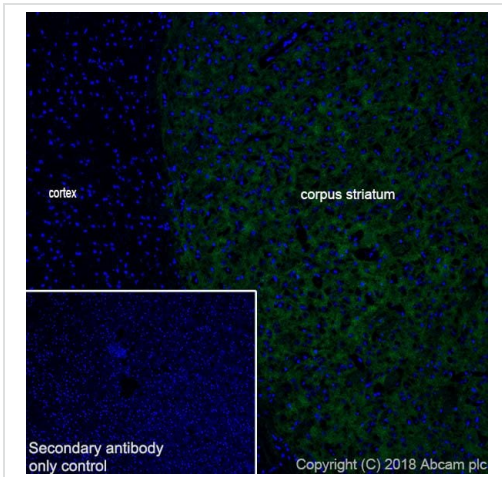
**Observed band size:** 88 kDa

**Exposure time:** 3 minutes

Blocking/Dilution buffer: 5% NFDm/TBST.

ab227829 was shown to specifically react with PDE10A in wild-type HAP1 cells as signal was lost in PDE10A knockout cells. Wild-type and PDE10A knockout samples were subjected to SDS-PAGE. ab227829 and [ab181602](#) (Rabbit anti-GAPDH loading control) were incubated 1 hour at room temperature at 1/1000 dilution and 1/200,000 dilution respectively. Blots were developed with Goat Anti-Rabbit IgG, (H+L), Peroxidase conjugated ([ab97051](#)) secondary antibody at 1/100,000 dilution for 1 hour at room temperature before imaging.

The blot was developed on a BIO-RAD® ChemiDoc™ MP instrument using the ECL technique.

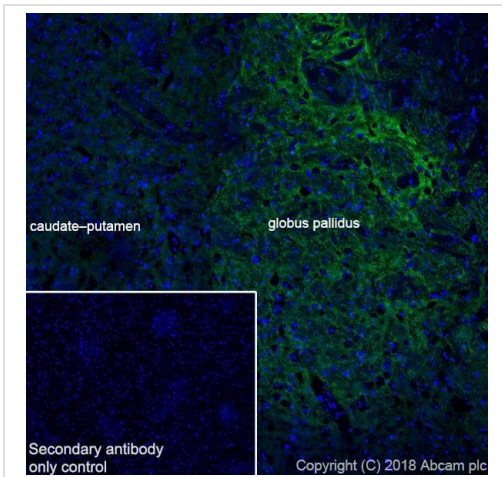


Immunohistochemistry (Frozen sections) - Anti-PDE10A antibody [EPR22383] (ab227829)

Immunohistochemical analysis of 4% PFA-fixed, 0.2% Triton X-100 permeabilized frozen mouse brain tissue labeling PDE10A with ab227829 at 1/2000 dilution, followed by Goat Anti-Rabbit IgG H&L (Alexa Fluor<sup>®</sup> 488) ([ab150077](#)) secondary antibody at 1/1000 dilution (green). Cytoplasmic staining on corpus striatum in mouse brain (PMID:16864896) is observed. Counterstained with DAPI (blue).

Heat mediated antigen retrieval using sodium citrate buffer (10mM citrate pH 6.0 + 0.05% Tween-20).

Secondary antibody only control: Used PBS instead of primary antibody, secondary antibody is Goat Anti-Rabbit IgG H&L (Alexa Fluor<sup>®</sup> 488) ([ab150077](#)) secondary antibody at 1/1000 dilution.

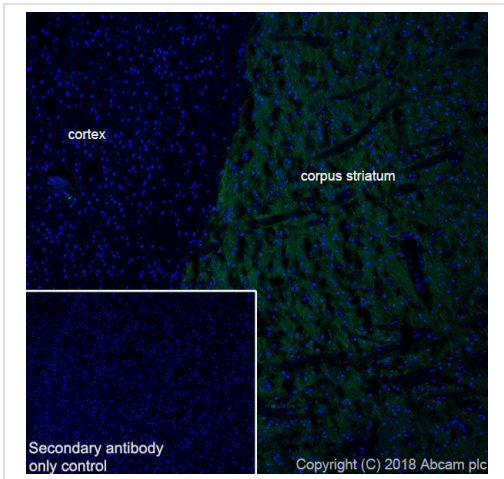


Immunohistochemistry (Frozen sections) - Anti-PDE10A antibody [EPR22383] (ab227829)

Immunohistochemical analysis of 4% PFA-fixed, 0.2% Triton X-100 permeabilized frozen mouse brain tissue labeling PDE10A with ab227829 at 1/2000 dilution, followed by Goat Anti-Rabbit IgG H&L (Alexa Fluor<sup>®</sup> 488) ([ab150077](#)) secondary antibody at 1/1000 dilution (green). Cytoplasmic staining on mouse caudate-putamen and globus pallidus in mouse brain (PMID:16864896; PMID:28115486) is observed. Counterstained with DAPI (blue).

Heat mediated antigen retrieval using sodium citrate buffer (10mM citrate pH 6.0 + 0.05% Tween-20).

Secondary antibody only control: Used PBS instead of primary antibody, secondary antibody is Goat Anti-Rabbit IgG H&L (Alexa Fluor<sup>®</sup> 488) ([ab150077](#)) secondary antibody at 1/1000 dilution.

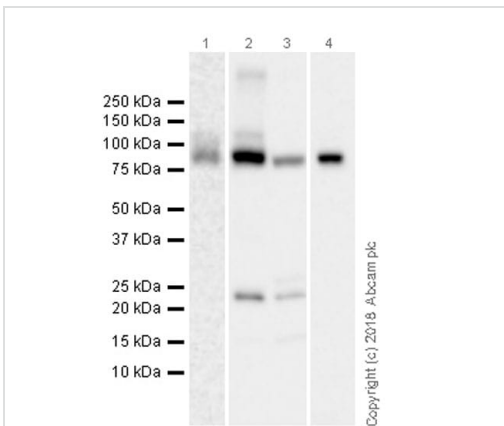


Immunohistochemistry (Frozen sections) - Anti-PDE10A antibody [EPR22383] (ab227829)

Immunohistochemical analysis of 4% PFA-fixed, 0.2% Triton X-100 permeabilized frozen rat brain tissue labeling PDE10A with ab227829 at 1/2000 dilution, followed by Goat Anti-Rabbit IgG H&L (Alexa Fluor<sup>®</sup> 488) ([ab150077](#)) secondary antibody at 1/1000 dilution (green). Cytoplasmic staining on corpus striatum in rat brain (PMID:16864896) is observed. Counterstained with DAPI (blue).

Heat mediated antigen retrieval using sodium citrate buffer (10mM citrate pH 6.0 + 0.05% Tween-20).

Secondary antibody only control: Used PBS instead of primary antibody, secondary antibody is Goat Anti-Rabbit IgG H&L (Alexa Fluor<sup>®</sup> 488) ([ab150077](#)) secondary antibody at 1/1000 dilution.



Western blot - Anti-PDE10A antibody [EPR22383] (ab227829)

**All lanes :** Anti-PDE10A antibody [EPR22383] (ab227829) at 1/1000 dilution

**Lane 1 :** Human brain lysate

**Lane 2 :** Mouse brain lysate

**Lane 3 :** Mouse testis lysate

**Lane 4 :** Rat brain lysate

Lysates/proteins at 20 µg per lane.

#### Secondary

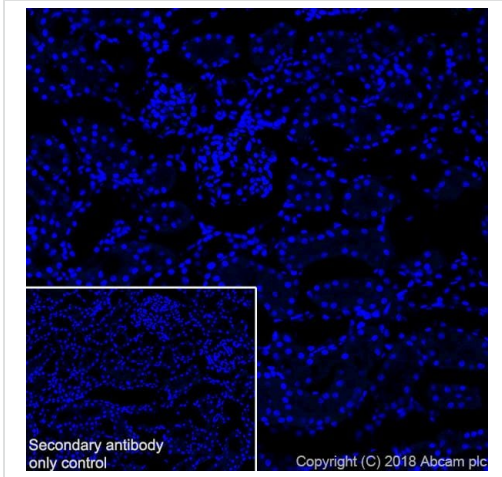
**All lanes :** Goat Anti-Rabbit IgG H&L (HRP) ([ab97051](#)) at 1/100000 dilution

**Predicted band size:** 88 kDa

**Observed band size:** 88 kDa

**Exposure time :** Lane 1: 3 minutes; Lane 2-3: 3 seconds; Lane 4: 26 seconds.

Blocking/Dilution buffer: 5% NFDm/TBST.



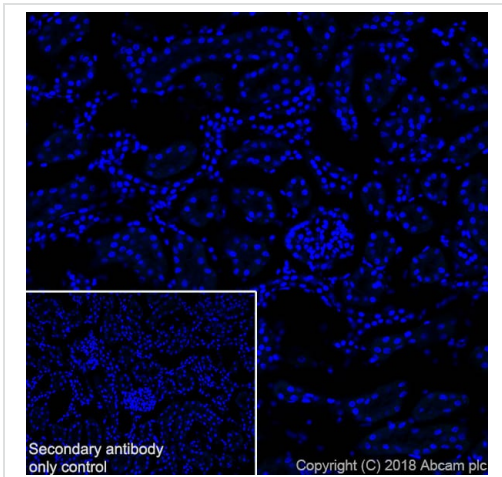
Immunohistochemistry (Frozen sections) - Anti-PDE10A antibody [EPR22383] (ab227829)

Immunohistochemical analysis of 4% PFA-fixed, 0.2% Triton X-100 permeabilized frozen rat kidney tissue labeling PDE10A with ab227829 at 1/2000 dilution, followed by Goat Anti-Rabbit IgG H&L (Alexa Fluor® 488) ([ab150077](#)) secondary antibody at 1/1000 dilution (green).

**Negative control:** No staining on rat kidney (PMID:16864896). Counterstained with DAPI (blue).

Heat mediated antigen retrieval using sodium citrate buffer (10mM citrate pH 6.0 + 0.05% Tween-20).

Secondary antibody only control: Used PBS instead of primary antibody, secondary antibody is Goat Anti-Rabbit IgG H&L (Alexa Fluor® 488) ([ab150077](#)) secondary antibody at 1/1000 dilution.



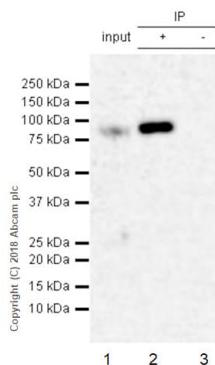
Immunohistochemistry (Frozen sections) - Anti-PDE10A antibody [EPR22383] (ab227829)

Immunohistochemical analysis of 4% PFA-fixed, 0.2% Triton X-100 permeabilized frozen mouse kidney tissue labeling PDE10A with ab227829 at 1/2000 dilution, followed by Goat Anti-Rabbit IgG H&L (Alexa Fluor® 488) ([ab150077](#)) secondary antibody at 1/1000 dilution (green).

**Negative control:** No staining on mouse kidney (PMID:16864896). Counterstained with DAPI (blue).

Heat mediated antigen retrieval using sodium citrate buffer (10mM citrate pH 6.0 + 0.05% Tween-20).

Secondary antibody only control: Used PBS instead of primary antibody, secondary antibody is Goat Anti-Rabbit IgG H&L (Alexa Fluor® 488) ([ab150077](#)) secondary antibody at 1/1000 dilution.



Immunoprecipitation - Anti-PDE10A antibody  
[EPR22383] (ab227829)

PDE10A was immunoprecipitated from 0.35 mg HeLa (human epithelial cell line from cervix adenocarcinoma) whole cell lysate with ab227829 at 1/30 dilution. Western blot was performed from the immunoprecipitate using ab227829 at 1/500 dilution. VeriBlot for IP Detection Reagent (HRP) ([ab131366](#)), was used for detection at 1/1000 dilution.

**Lane 1:** HeLa whole cell lysate 10 µg (Input).

**Lane 2:** ab227829 IP in HeLa whole cell lysate.

**Lane 3:** Rabbit monoclonal IgG ([ab172730](#)) instead of ab227829 in HeLa whole cell lysate.

Blocking/Dilution buffer: 5% NFDm/TBST.

Exposure time: 3 minutes.

### Why choose a recombinant antibody?



**Research with confidence**  
Consistent and reproducible results



**Long-term and scalable supply**  
Recombinant technology



**Success from the first experiment**  
Confirmed specificity



**Ethical standards compliant**  
Animal-free production

Anti-PDE10A antibody [EPR22383] (ab227829)

**Please note:** All products are "FOR RESEARCH USE ONLY. NOT FOR USE IN DIAGNOSTIC PROCEDURES"

### Our Abpromise to you: Quality guaranteed and expert technical support

- Replacement or refund for products not performing as stated on the datasheet
- Valid for 12 months from date of delivery

- Response to your inquiry within 24 hours
- We provide support in Chinese, English, French, German, Japanese and Spanish
- Extensive multi-media technical resources to help you
- We investigate all quality concerns to ensure our products perform to the highest standards

If the product does not perform as described on this datasheet, we will offer a refund or replacement. For full details of the Abpromise, please visit <https://www.abcam.com/abpromise> or contact our technical team.

### **Terms and conditions**

---

- Guarantee only valid for products bought direct from Abcam or one of our authorized distributors