

Product datasheet

Anti-PDE10A antibody [OTI3G9] ab114025

2 Images

Overview

Product name	Anti-PDE10A antibody [OTI3G9]
Description	Mouse monoclonal [OTI3G9] to PDE10A
Host species	Mouse
Tested applications	Suitable for: Flow Cyt (Intra), ICC/IF
Species reactivity	Reacts with: Human, African green monkey
Immunogen	Recombinant full length protein corresponding to Human PDE10A aa 1-779. Produced in HEK-293T cells (NP_006652). Database link: Q9Y233
Positive control	ICC/IF: COS-7 cells transiently transfected by pCMV6-ENTRY PDE10A cDNA. Flow Cyt (Intra): HEK-293T cells transfected with PDE10A overexpress plasmid.
General notes	Clone OTI3G9 (formerly 3G9). The Life Science industry has been in the grips of a reproducibility crisis for a number of years. Abcam is leading the way in addressing this with our range of recombinant monoclonal antibodies and knockout edited cell lines for gold-standard validation. Please check that this product meets your needs before purchasing. If you have any questions, special requirements or concerns, please send us an inquiry and/or contact our Support team ahead of purchase. Recommended alternatives for this product can be found below, along with publications, customer reviews and Q&As

Properties

Form	Liquid
Storage instructions	Shipped at 4°C. Store at +4°C short term (1-2 weeks). Upon delivery aliquot. Store at -20°C. Avoid freeze / thaw cycle.
Storage buffer	pH: 7.30 Preservative: 0.02% Sodium azide Constituents: PBS, 1% BSA, 50% Glycerol
Purity	Affinity purified
Purification notes	Purified from cell culture supernatant by affinity chromatography.
Clonality	Monoclonal

Clone number OT13G9
Isotype IgG2b

Applications

The Abpromise guarantee Our **Abpromise guarantee** covers the use of ab114025 in the following tested applications. The application notes include recommended starting dilutions; optimal dilutions/concentrations should be determined by the end user.

Application	Abreviews	Notes
Flow Cyt (Intra)		1/100. ab170192 - Mouse monoclonal IgG2b, is suitable for use as an isotype control with this antibody.
ICC/IF		1/100.

Target

Function Plays a role in signal transduction by regulating the intracellular concentration of cyclic nucleotides. Can hydrolyze both cAMP and cGMP, but has higher affinity for cAMP and is more efficient with cAMP as substrate.

Tissue specificity Abundant in the putamen and caudate nucleus regions of brain and testis, moderately expressed in the thyroid gland, pituitary gland, thalamus and cerebellum.

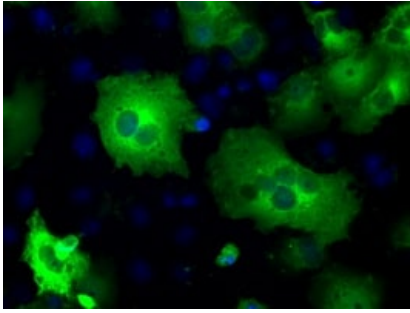
Pathway Purine metabolism; 3',5'-cyclic AMP degradation; AMP from 3',5'-cyclic AMP: step 1/1. Purine metabolism; 3',5'-cyclic GMP degradation; GMP from 3',5'-cyclic GMP: step 1/1.

Sequence similarities Belongs to the cyclic nucleotide phosphodiesterase family. Contains 2 GAF domains.

Domain The tandem GAF domains bind cAMP, and regulate enzyme activity. The binding of cAMP stimulates enzyme activity. Composed of a C-terminal catalytic domain containing two divalent metal sites and an N-terminal regulatory domain which contains one cyclic nucleotide-binding region.

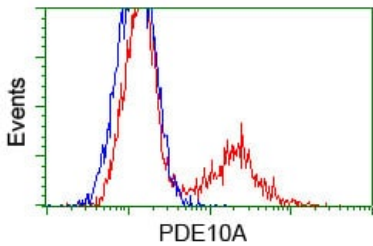
Cellular localization Cytoplasm. Located mostly to soluble cellular fractions.

Images



Immunocytochemistry/ Immunofluorescence - Anti-PDE10A antibody [OTI3G9] (ab114025)

pCMV6-ENTRY PDE10A cDNA transfected COS-7 (African green monkey kidney fibroblast-like cell line) cells stained for PDE10A using ab114025 at a 1/100 dilution in ICC/IF.



Flow Cytometry (Intracellular) - Anti-PDE10A antibody [OTI3G9] (ab114025)

HEK-293T (Human epithelial cell line from embryonic kidney transformed with large T antigen) cells transfected with either pCMV6-ENTRY PDE10A (Red) or empty vector control plasmid (Blue) were immunostained with ab114025 at 1/100 and then analyzed by flow cytometry.

Please note: All products are "FOR RESEARCH USE ONLY. NOT FOR USE IN DIAGNOSTIC PROCEDURES"

Our Abpromise to you: Quality guaranteed and expert technical support

- Replacement or refund for products not performing as stated on the datasheet
- Valid for 12 months from date of delivery
- Response to your inquiry within 24 hours
- We provide support in Chinese, English, French, German, Japanese and Spanish
- Extensive multi-media technical resources to help you
- We investigate all quality concerns to ensure our products perform to the highest standards

If the product does not perform as described on this datasheet, we will offer a refund or replacement. For full details of the Abpromise, please visit <https://www.abcam.com/abpromise> or contact our technical team.

Terms and conditions

- Guarantee only valid for products bought direct from Abcam or one of our authorized distributors