

## Product datasheet

### Anti-PDE1B antibody [EPR12293(2)] ab182565

Recombinant RabMAb

★★★★★ 1 Abreviews 1 References 8 Images

#### Overview

Product name	Anti-PDE1B antibody [EPR12293(2)]
Description	Rabbit monoclonal [EPR12293(2)] to PDE1B
Host species	Rabbit
Tested applications	<b>Suitable for:</b> WB, IHC-P
Species reactivity	<b>Reacts with:</b> Mouse, Rat, Human
Immunogen	Recombinant fragment. This information is proprietary to Abcam and/or its suppliers.
Positive control	WB: Human cerebellum, Human brain, Mouse brain, and Rat brain lysates. IHC-P: human cerebellum, mouse cerebrum, and rat cerebrum tissues.
General notes	<p>This product is a recombinant monoclonal antibody, which offers several advantages including:</p> <ul style="list-style-type: none"> <li>- High batch-to-batch consistency and reproducibility</li> <li>- Improved sensitivity and specificity</li> <li>- Long-term security of supply</li> <li>- Animal-free production</li> </ul> <p>For more information <a href="#">see here</a>.</p> <p>Our RabMAb<sup>®</sup> technology is a patented hybridoma-based technology for making rabbit monoclonal antibodies. For details on our patents, please refer to <a href="#">RabMAb<sup>®</sup> patents</a>.</p>

#### Properties

Form	Liquid
Storage instructions	Shipped at 4°C. Store at +4°C short term (1-2 weeks). Upon delivery aliquot. Store at -20°C long term. Avoid freeze / thaw cycle.
Storage buffer	<p>pH: 7.2</p> <p>Preservative: 0.01% Sodium azide</p> <p>Constituents: PBS, 40% Glycerol (glycerin, glycerine), 0.05% BSA</p>
Purity	Protein A purified
Clonality	Monoclonal
Clone number	EPR12293(2)
Isotype	IgG

## Applications

### The Abpromise guarantee

Our **Abpromise guarantee** covers the use of ab182565 in the following tested applications.

The application notes include recommended starting dilutions; optimal dilutions/concentrations should be determined by the end user.

Application	Abreviews	Notes
WB		1/1000 - 1/10000. Detects a band of approximately 61 kDa (predicted molecular weight: 61 kDa).
IHC-P		1/100 - 1/2000. Perform heat mediated antigen retrieval with Tris/EDTA buffer pH 9.0 before commencing with IHC staining protocol. 1:100 in human tissues / 1:2000 in mouse and rat tissues

## Target

### Function

Cyclic nucleotide phosphodiesterase with a dual-specificity for the second messengers cAMP and cGMP, which are key regulators of many important physiological processes. Has a preference for cGMP as a substrate.

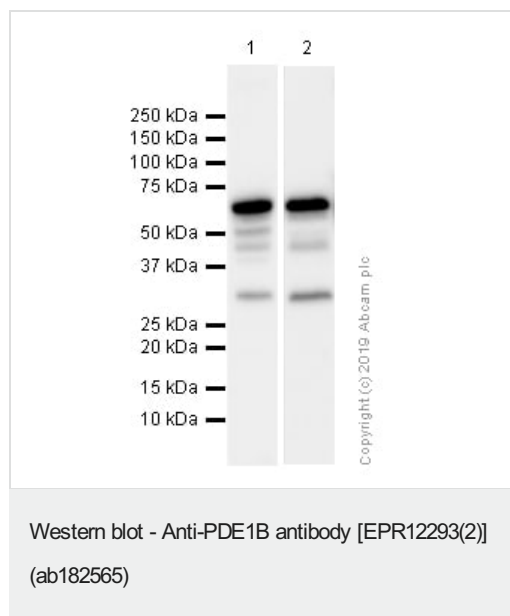
### Sequence similarities

Belongs to the cyclic nucleotide phosphodiesterase family. PDE1 subfamily.

### Cellular localization

Cytoplasm.

## Images



**All lanes :** Anti-PDE1B antibody [EPR12293(2)] (ab182565) at 1/1000 dilution (Purified)

**Lane 1 :** Human cerebellum lysates

**Lane 2 :** Human brain lysates

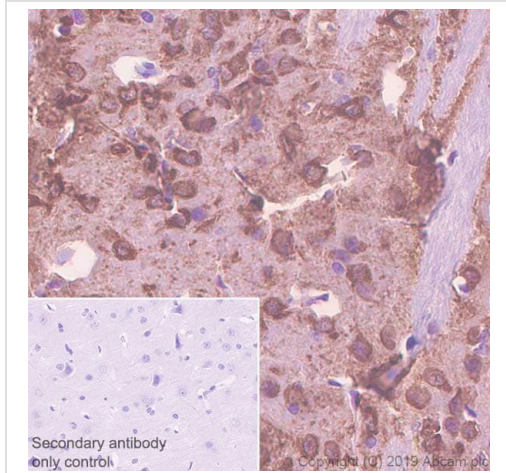
Lysates/proteins at 20 µg per lane.

### Secondary

**All lanes :** Goat Anti-Rabbit IgG (HRP) with minimal cross-reactivity with human IgG at 1/2000 dilution

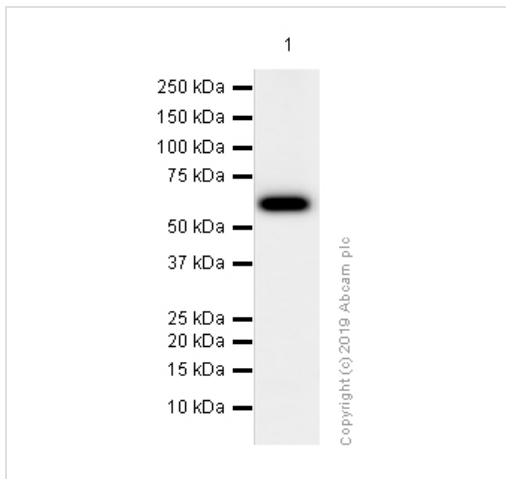
**Predicted band size:** 61 kDa

**Observed band size:** 61 kDa



Immunohistochemistry (Formalin/PFA-fixed paraffin-embedded sections) - Anti-PDE1B antibody [EPR12293(2)] (ab182565)

Immunohistochemistry (Formalin/PFA-fixed paraffin-embedded sections) analysis of rat cerebrum tissue sections labeling PDE1B with purified ab182565 at 1/2000 dilution (0.47 µg/ml). Heat mediated antigen retrieval using Bond™ Epitope Retrieval Solution 1 (pH 6.0). Rabbit specific IHC polymer detection kit HRP/DAB (**ab209101**) was used as the secondary antibody. Negative control: PBS instead of the primary antibody. Hematoxylin was used as a counterstain.



Western blot - Anti-PDE1B antibody [EPR12293(2)] (ab182565)

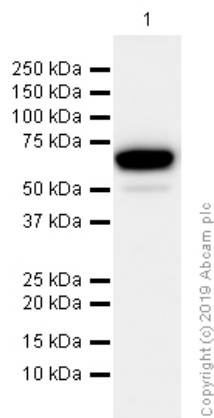
Anti-PDE1B antibody [EPR12293(2)] (ab182565) at 1/10000 dilution (Purified) + Rat brain lysates at 15 µg

#### Secondary

Goat Anti-Rabbit IgG (HRP) with minimal cross-reactivity with human IgG at 1/5000 dilution

**Predicted band size:** 61 kDa

**Observed band size:** 61 kDa



Western blot - Anti-PDE1B antibody [EPR12293(2)]  
(ab182565)

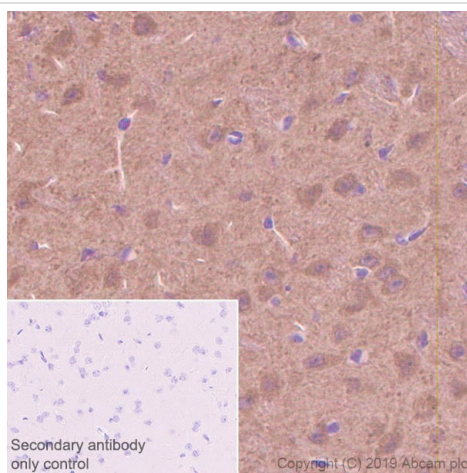
Anti-PDE1B antibody [EPR12293(2)] (ab182565) at 1/5000  
dilution (Purified) + Mouse brain lysates at 20 µg

### Secondary

Goat Anti-Rabbit IgG (HRP) with minimal cross-reactivity with  
human IgG at 1/5000 dilution

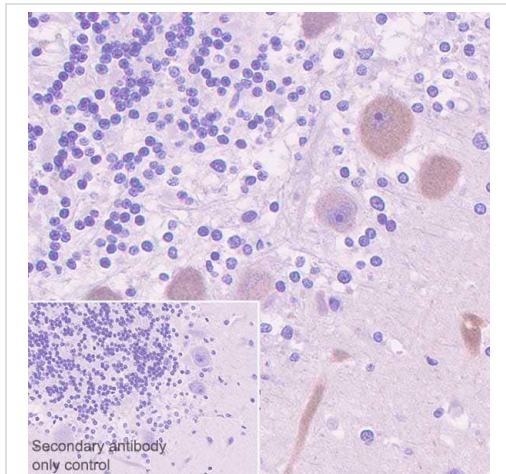
**Predicted band size:** 61 kDa

**Observed band size:** 61 kDa



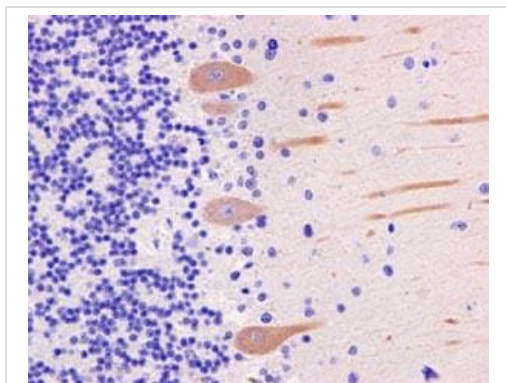
Immunohistochemistry (Formalin/PFA-fixed paraffin-  
embedded sections) - Anti-PDE1B antibody  
[EPR12293(2)] (ab182565)

Immunohistochemistry (Formalin/PFA-fixed paraffin-embedded  
sections) analysis of mouse cerebrum tissue sections labeling  
PDE1B with purified ab182565 at 1/2000 dilution (0.47 µg/ml).  
Heat mediated antigen retrieval using Bond™ Epitope Retrieval  
Solution 1 (pH 6.0). Rabbit specific IHC polymer detection kit  
HRP/DAB (**ab209101**) was used as the secondary antibody.  
Negative control: PBS instead of the primary antibody. Hematoxylin  
was used as a counterstain.



Immunohistochemistry (Formalin/PFA-fixed paraffin-embedded sections) - Anti-PDE1B antibody  
[EPR12293(2)] (ab182565)

Immunohistochemistry (Formalin/PFA-fixed paraffin-embedded sections) analysis of human cerebellum tissue sections labeling PDE1B with purified ab182565 at 1/100 dilution (9.43 µg/ml). Heat mediated antigen retrieval using Bond™ Epitope Retrieval Solution 1 (pH 6.0). Rabbit specific IHC polymer detection kit HRP/DAB (**ab209101**) was used as the secondary antibody. Negative control: PBS instead of the primary antibody. Hematoxylin was used as a counterstain.







Immunohistochemistry (Formalin/PFA-fixed paraffin-embedded sections) - Anti-PDE1B antibody  
[EPR12293(2)] (ab182565)

Immunohistochemical analysis of paraffin-embedded Human cerebellum tissue labeling PDE1B with unpurified ab182565 at 1/100 dilution followed by prediluted HRP Polymer for Rabbit IgG. Counter stained with Hematoxylin.

Perform heat mediated antigen retrieval with EDTA buffer pH 9 before commencing with IHC staining protocol.

Why choose a recombinant antibody?

 <p><b>Research with confidence</b> Consistent and reproducible results</p>	 <p><b>Long-term and scalable supply</b> Recombinant technology</p>
 <p><b>Success from the first experiment</b> Confirmed specificity</p>	 <p><b>Ethical standards compliant</b> Animal-free production</p>

Anti-PDE1B antibody [EPR12293(2)] (ab182565)

### **Our Abpromise to you: Quality guaranteed and expert technical support**

---

- Replacement or refund for products not performing as stated on the datasheet
- Valid for 12 months from date of delivery
- Response to your inquiry within 24 hours
- We provide support in Chinese, English, French, German, Japanese and Spanish
- Extensive multi-media technical resources to help you
- We investigate all quality concerns to ensure our products perform to the highest standards

If the product does not perform as described on this datasheet, we will offer a refund or replacement. For full details of the Abpromise, please visit <https://www.abcam.com/abpromise> or contact our technical team.

### **Terms and conditions**

---

- Guarantee only valid for products bought direct from Abcam or one of our authorized distributors