

Anti-PDE2A antibody ab224616

[1 References](#) [4 Images](#)

Overview

Product name	Anti-PDE2A antibody
Description	Rabbit polyclonal to PDE2A
Host species	Rabbit
Tested applications	Suitable for: WB, IHC-P, ICC/IF
Species reactivity	Reacts with: Human
Immunogen	Recombinant fragment corresponding to Human PDE2A aa 15-226. Database link: O00408
Positive control	WB: HeLa cell lysate. IHC-P: Human kidney and adrenal gland tissues. ICC/IF: HepG2 cells.
General notes	<p>The Life Science industry has been in the grips of a reproducibility crisis for a number of years. Abcam is leading the way in addressing this with our range of recombinant monoclonal antibodies and knockout edited cell lines for gold-standard validation. Please check that this product meets your needs before purchasing.</p> <p>If you have any questions, special requirements or concerns, please send us an inquiry and/or contact our Support team ahead of purchase. Recommended alternatives for this product can be found below, along with publications, customer reviews and Q&As</p>

Properties

Form	Liquid
Storage instructions	Shipped at 4°C. Store at +4°C short term (1-2 weeks). Upon delivery aliquot. Store at -20°C long term. Avoid freeze / thaw cycle.
Storage buffer	pH: 7.40 Preservative: 0.03% Proclin 300 Constituents: 50% Glycerol (glycerin, glycerine), PBS
Purity	Protein G purified
Purification notes	Purity >95%.
Clonality	Polyclonal
Isotype	IgG

Applications

The Abpromise guarantee

Our **Abpromise guarantee** covers the use of ab224616 in the following tested applications.

The application notes include recommended starting dilutions; optimal dilutions/concentrations should be determined by the end user.

Application	Abreviews	Notes
WB		1/500 - 1/5000. Detects a band of approximately 106 kDa (predicted molecular weight: 106 kDa).
IHC-P		1/20 - 1/200.
ICC/IF		1/50 - 1/200.

Target

Function

Cyclic nucleotide phosphodiesterase with a dual-specificity for the second messengers cAMP and cGMP, which are key regulators of many important physiological processes.

Tissue specificity

Expressed in brain and to a lesser extent in heart, placenta, lung, skeletal muscle, kidney and pancreas.

Sequence similarities

Belongs to the cyclic nucleotide phosphodiesterase family. PDE2 subfamily. Contains 2 GAF domains.

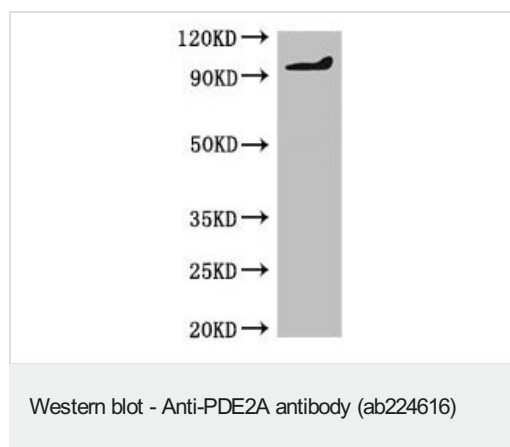
Domain

GAF 1 functions as a dimerization domain, whereas GAF 2 binds cGMP, which causes activation of the catalytic activity of the enzyme.

Cellular localization

Membrane.

Images



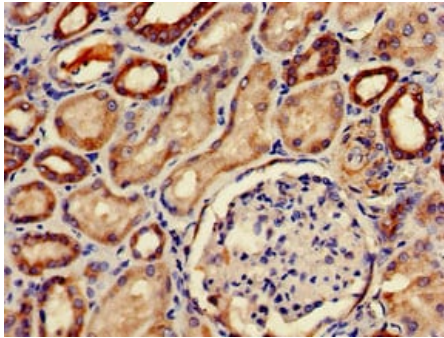
Anti-PDE2A antibody (ab224616) at 1/500 dilution + HeLa (human epithelial cell line from cervix adenocarcinoma) cell lysate

Secondary

Goat polyclonal to rabbit IgG at 1/50000 dilution

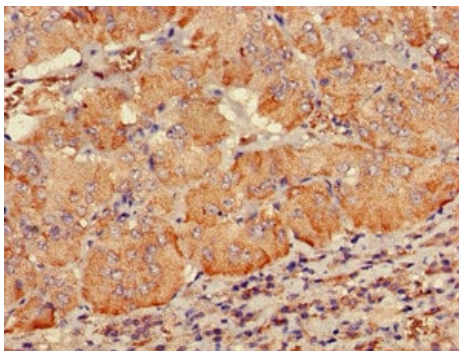
Predicted band size: 106 kDa

Observed band size: 106 kDa



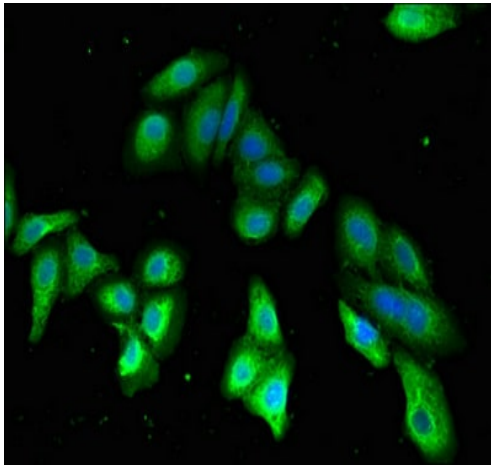
Paraffin-embedded human kidney tissue stained for PDE2A using ab224616 at 1/100 dilution in immunohistochemical analysis.

Immunohistochemistry (Formalin/PFA-fixed paraffin-embedded sections) - Anti-PDE2A antibody (ab224616)



Paraffin-embedded human adrenal gland tissue stained for PDE2A using ab224616 at 1/100 dilution in immunohistochemical analysis.

Immunohistochemistry (Formalin/PFA-fixed paraffin-embedded sections) - Anti-PDE2A antibody (ab224616)



Immunocytochemistry/ Immunofluorescence - Anti-PDE2A antibody (ab224616)

HepG2 (human liver hepatocellular carcinoma cell line) cells stained for PDE2A (green) using ab224616 at 1/100 dilution in ICC/IF, followed by Alexa Fluor 488[®] conjugated Goat Anti-Rabbit IgG (H+L).

Please note: All products are "FOR RESEARCH USE ONLY. NOT FOR USE IN DIAGNOSTIC PROCEDURES"

Our Abpromise to you: Quality guaranteed and expert technical support

- Replacement or refund for products not performing as stated on the datasheet
- Valid for 12 months from date of delivery
- Response to your inquiry within 24 hours
- We provide support in Chinese, English, French, German, Japanese and Spanish
- Extensive multi-media technical resources to help you
- We investigate all quality concerns to ensure our products perform to the highest standards

If the product does not perform as described on this datasheet, we will offer a refund or replacement. For full details of the Abpromise, please visit <https://www.abcam.com/abpromise> or contact our technical team.

Terms and conditions

- Guarantee only valid for products bought direct from Abcam or one of our authorized distributors