


Anti-PDE3B antibody **ab99290**

[2 References](#) [2 Images](#)

Overview

Product name	Anti-PDE3B antibody
Description	Rabbit polyclonal to PDE3B
Host species	Rabbit
Tested applications	Suitable for: WB, IP
Species reactivity	Reacts with: Human Predicted to work with: Horse, Chicken, Turkey, Chimpanzee, Rhesus monkey, Gorilla, Orangutan, Elephant 
Immunogen	Synthetic peptide corresponding to a region between residue 1062 and 1112 of human PDE3B. (NP_000913.2)
Positive control	HeLa whole cell lysate (ab150035)
General notes	<p>The Life Science industry has been in the grips of a reproducibility crisis for a number of years. Abcam is leading the way in addressing this with our range of recombinant monoclonal antibodies and knockout edited cell lines for gold-standard validation. Please check that this product meets your needs before purchasing.</p> <p>If you have any questions, special requirements or concerns, please send us an inquiry and/or contact our Support team ahead of purchase. Recommended alternatives for this product can be found below, along with publications, customer reviews and Q&As</p>

Properties

Form	Liquid
Storage instructions	Shipped at 4°C. Upon delivery aliquot and store at -20°C. Avoid freeze / thaw cycles.
Storage buffer	pH: 6.8 Preservative: 0.09% Sodium azide Constituents: 0.1% BSA, Tris buffered saline
Purity	Immunogen affinity purified
Clonality	Polyclonal
Isotype	IgG

Applications

The Abpromise guarantee

Our **Abpromise guarantee** covers the use of ab99290 in the following tested applications.

The application notes include recommended starting dilutions; optimal dilutions/concentrations should be determined by the end user.

Application	Abreviews	Notes
WB		1/2000 - 1/10000. Predicted molecular weight: 124 kDa.
IP		Use at 2-5 µg/mg of lysate.

Target

Function

Cyclic nucleotide phosphodiesterase with a dual-specificity for the second messengers cAMP and cGMP, which are key regulators of many important physiological processes. May play a role in fat metabolism.

Tissue specificity

Abundant in adipose tissues.

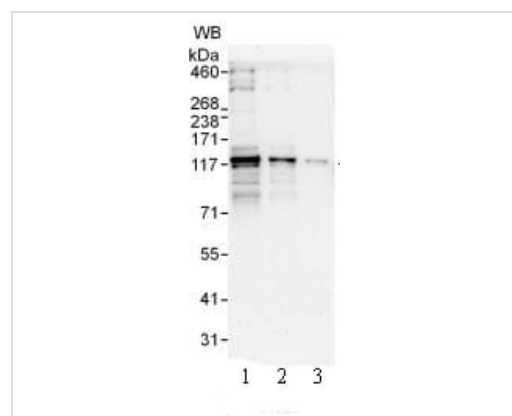
Sequence similarities

Belongs to the cyclic nucleotide phosphodiesterase family. PDE3 subfamily.

Cellular localization

Membrane.

Images



Western blot - Anti-PDE3B antibody (ab99290)

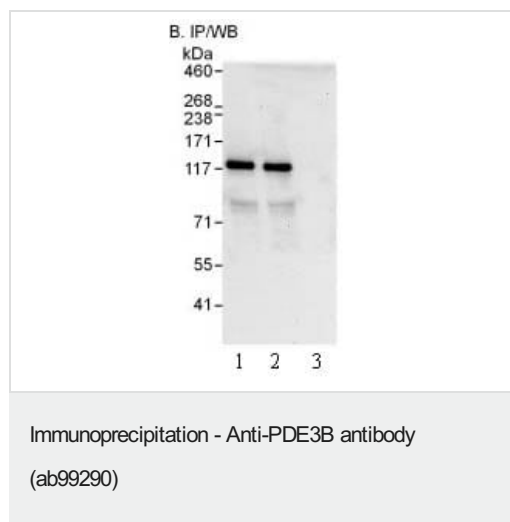
All lanes : Anti-PDE3B antibody (ab99290) at 0.04 µg/ml

Lane 1 : HeLa whole cell lysate at 50 µg

Lane 2 : HeLa whole cell lysate at 15 µg

Lane 3 : HeLa whole cell lysate at 5 µg

Predicted band size: 124 kDa



Lane 1: Detection of Human PDE3B by Immunoprecipitation from HeLa whole cell lysate (1 mg for IP, 20% of IP loaded), using an antibody recognising an upstream epitope of PDE3B.

Lane 2: Detection of Human PDE3B by Immunoprecipitation from HeLa whole cell lysate (1 mg for IP, 20% of IP loaded), using ab99290 at 3 µg/mg lysate for IP.

Lane 3 : Immunoprecipitation from HeLa whole cell lysate (1 mg for IP, 20% of IP loaded), using Control IgG.

Subsequent Western blot detection used ab99290 at 1 µg/ml.

Developed using the ECL technique with an exposure time of 10 seconds.

Please note: All products are "FOR RESEARCH USE ONLY. NOT FOR USE IN DIAGNOSTIC PROCEDURES"

Our Abpromise to you: Quality guaranteed and expert technical support

- Replacement or refund for products not performing as stated on the datasheet
- Valid for 12 months from date of delivery
- Response to your inquiry within 24 hours
- We provide support in Chinese, English, French, German, Japanese and Spanish
- Extensive multi-media technical resources to help you
- We investigate all quality concerns to ensure our products perform to the highest standards

If the product does not perform as described on this datasheet, we will offer a refund or replacement. For full details of the Abpromise, please visit <https://www.abcam.com/abpromise> or contact our technical team.

Terms and conditions

- Guarantee only valid for products bought direct from Abcam or one of our authorized distributors