

Product datasheet

Anti-PDE4B antibody [EPR11830] ab170939

KO VALIDATED

Recombinant

RabMAb

[3 References](#) [4 Images](#)

Overview

Product name	Anti-PDE4B antibody [EPR11830]
Description	Rabbit monoclonal [EPR11830] to PDE4B
Host species	Rabbit
Tested applications	Suitable for: Flow Cyt (Intra), WB Unsuitable for: ICC/IF, IHC-P or IP
Species reactivity	Reacts with: Mouse, Human Does not react with: Rat
Immunogen	Recombinant fragment within Human PDE4B aa 550 to the C-terminus. The exact sequence is proprietary. Database link: Q07343
Positive control	WB: HeLa, A549, Human fetal brain and Human glioma lysates; Mouse brain tissue lysate. Flow Cyt (intra): A549 cells.
General notes	This product is a recombinant monoclonal antibody, which offers several advantages including: <ul style="list-style-type: none"> - High batch-to-batch consistency and reproducibility - Improved sensitivity and specificity - Long-term security of supply - Animal-free production For more information see here . Our RabMAb [®] technology is a patented hybridoma-based technology for making rabbit monoclonal antibodies. For details on our patents, please refer to RabMAb[®] patents .

Properties

Form	Liquid
Storage instructions	Shipped at 4°C. Store at +4°C short term (1-2 weeks). Upon delivery aliquot. Store at -20°C long term. Avoid freeze / thaw cycle.
Storage buffer	pH: 7.2 Preservative: 0.01% Sodium azide Constituents: 9% PBS, 40% Glycerol (glycerin, glycerine), 0.05% BSA, 50% Tissue culture supernatant

Purity	Tissue culture supernatant
Clonality	Monoclonal
Clone number	EPR11830
Isotype	IgG

Applications

The Abpromise guarantee Our **Abpromise guarantee** covers the use of ab170939 in the following tested applications.

The application notes include recommended starting dilutions; optimal dilutions/concentrations should be determined by the end user.

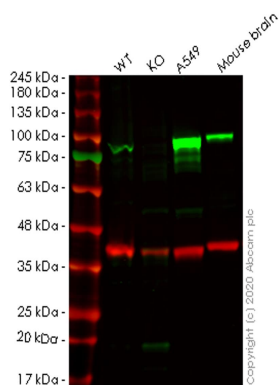
Application	Abreviews	Notes
Flow Cyt (Intra)		1/10 - 1/100. <u>ab172730</u> - Rabbit monoclonal IgG, is suitable for use as an isotype control with this antibody.
WB		1/1000 - 1/5000. Predicted molecular weight: 83 kDa.

Application notes Is unsuitable for ICC/IF, IHC-P or IP.

Target

Function	Hydrolyzes the second messenger cAMP, which is a key regulator of many important physiological processes. May be involved in mediating central nervous system effects of therapeutic agents ranging from antidepressants to antiasthmatic and anti-inflammatory agents.
Tissue specificity	Expressed in brain, heart, lung and skeletal muscle.
Pathway	Purine metabolism; 3',5'-cyclic AMP degradation; AMP from 3',5'-cyclic AMP: step 1/1.
Sequence similarities	Belongs to the cyclic nucleotide phosphodiesterase family. PDE4 subfamily.

Images



Western blot - Anti-PDE4B antibody [EPR11830]
(ab170939)

All lanes : Anti-PDE4B antibody [EPR11830] (ab170939) at 1/500 dilution

Lane 1 : Wild-type HeLa cell lysate

Lane 2 : PDE4B knockout HeLa cell lysate

Lane 3 : A549 cell lysate

Lane 4 : Mouse brain tissue lysate

Lysates/proteins at 20 µg per lane.

Secondary

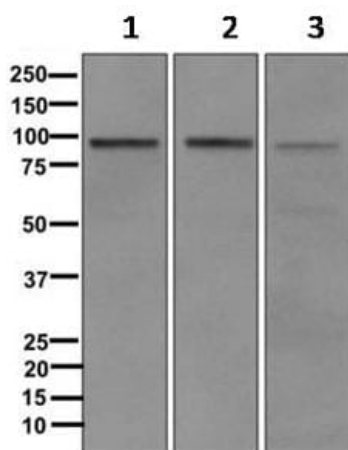
All lanes : Goat anti-Rabbit IgG H&L (IRDye® 800CW) preadsorbed ([ab216773](#)) at 1/10000 dilution

Predicted band size: 83 kDa

Observed band size: 83 kDa

Lanes 1-4: Merged signal (red and green). Green - ab170939 observed at 83 kDa. Red - loading control [ab8245](#) observed at 36 kDa.

ab170939 Anti-PDE4B antibody [EPR11830] was shown to specifically react with PDE4B in wild-type HeLa cells. Loss of signal was observed when knockout cell line [ab265259](#) (knockout cell lysate [ab257576](#)) was used. Wild-type and PDE4B knockout samples were subjected to SDS-PAGE. ab170939 and Anti-GAPDH antibody [6C5] - Loading Control ([ab8245](#)) were incubated overnight at 4°C at 1 in 500 dilution and 1 in 20000 dilution respectively. Blots were developed with Goat anti-Rabbit IgG H&L (IRDye® 800CW) preadsorbed ([ab216773](#)) and Goat anti-Mouse IgG H&L (IRDye® 680RD) preadsorbed ([ab216776](#)) secondary antibodies at 1 in 20000 dilution for 1 hour at room temperature before imaging.



Western blot - Anti-PDE4B antibody [EPR11830]
(ab170939)

All lanes : Anti-PDE4B antibody [EPR11830] (ab170939) at
1/1000 dilution

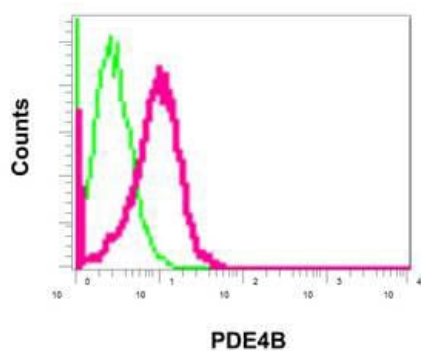
Lane 1 : Human fetal brain lysates

Lane 2 : Human glioma lysates

Lane 3 : A549 lysates

Lysates/proteins at 10 µg per lane.

Predicted band size: 83 kDa



Flow Cytometry (Intracellular) - Anti-PDE4B antibody
[EPR11830] (ab170939)

Intracellular flow cytometric analysis of permeabilized A549 cells
labeling PDE4B using ab170939 (red) at 1/10 dilution, or a rabbit
IgG (negative) (green).

Why choose a recombinant antibody?



Research with confidence
Consistent and reproducible results



Long-term and scalable supply
Recombinant technology



Success from the first experiment
Confirmed specificity



Ethical standards compliant
Animal-free production

Anti-PDE4B antibody [EPR11830] (ab170939)

Please note: All products are "FOR RESEARCH USE ONLY. NOT FOR USE IN DIAGNOSTIC PROCEDURES"

Our Abpromise to you: Quality guaranteed and expert technical support

- Replacement or refund for products not performing as stated on the datasheet
- Valid for 12 months from date of delivery
- Response to your inquiry within 24 hours
- We provide support in Chinese, English, French, German, Japanese and Spanish
- Extensive multi-media technical resources to help you
- We investigate all quality concerns to ensure our products perform to the highest standards

If the product does not perform as described on this datasheet, we will offer a refund or replacement. For full details of the Abpromise, please visit <https://www.abcam.com/abpromise> or contact our technical team.

Terms and conditions

- Guarantee only valid for products bought direct from Abcam or one of our authorized distributors