

Product datasheet

Anti-PDE7A/HCP1 antibody [EPR7731] ab154857

Recombinant RabMAb

[3 References](#) [4 Images](#)

Overview

Product name	Anti-PDE7A/HCP1 antibody [EPR7731]
Description	Rabbit monoclonal [EPR7731] to PDE7A/HCP1
Host species	Rabbit
Tested applications	Suitable for: WB, IHC-P, ICC/IF Unsuitable for: Flow Cyt or IP
Species reactivity	Reacts with: Human
Immunogen	Synthetic peptide corresponding to Human PDE7A/HCP1. Database link: Q13946
Positive control	HuT78 cell lysate; Human skeletal muscle tissue; HuT78 cells.
General notes	<p>This product is a recombinant monoclonal antibody, which offers several advantages including:</p> <ul style="list-style-type: none">- High batch-to-batch consistency and reproducibility- Improved sensitivity and specificity- Long-term security of supply- Animal-free production <p>For more information see here.</p> <p>Our RabMAb[®] technology is a patented hybridoma-based technology for making rabbit monoclonal antibodies. For details on our patents, please refer to RabMAb[®] patents.</p> <p>Mouse, Rat: We have preliminary internal testing data to indicate this antibody may not react with these species. Please contact us for more information.</p>

Properties

Form	Liquid
Storage instructions	Shipped at 4°C. Store at -20°C.
Storage buffer	pH: 7.2 Preservative: 0.01% Sodium azide Constituents: 9% PBS, 40% Glycerol (glycerin, glycerine), 0.05% BSA, 50% Tissue culture supernatant
Purity	Protein A purified

Clonality	Monoclonal
Clone number	EPR7731
Isotype	IgG

Applications

The Abpromise guarantee Our **Abpromise guarantee** covers the use of ab154857 in the following tested applications. The application notes include recommended starting dilutions; optimal dilutions/concentrations should be determined by the end user.

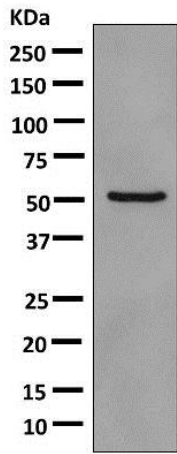
Application	Abreviews	Notes
WB		1/1000 - 1/10000. Predicted molecular weight: 56 kDa.
IHC-P		1/100 - 1/250. Perform heat mediated antigen retrieval before commencing with IHC staining protocol.
ICC/IF		1/250 - 1/500.

Application notes Is unsuitable for Flow Cyt or IP.

Target

Function	Hydrolyzes the second messenger cAMP, which is a key regulator of many important physiological processes. May have a role in muscle signal transduction.
Tissue specificity	PDE7A1 is found at high levels in skeletal muscle and at low levels in a variety of tissues including brain and heart. It is expressed as well in two T-cell lines. PDE7A2 is found abundantly in skeletal muscle and at low levels in heart.
Pathway	Purine metabolism; 3',5'-cyclic AMP degradation; AMP from 3',5'-cyclic AMP: step 1/1.
Sequence similarities	Belongs to the cyclic nucleotide phosphodiesterase family. PDE7 subfamily.
Developmental stage	Developmentally regulated. PDE7A1 and PDE7A2 are found in several fetal tissues, expression is reduced throughout development. It persists strongly only in adult skeletal muscle.
Domain	Composed of a C-terminal catalytic domain containing two putative divalent metal sites and an N-terminal regulatory domain.
Cellular localization	Cytoplasm > cytosol. PDE7A1 (57 kDa) is located mostly to soluble cellular fractions and Cytoplasm. PDE7A2 (50 kDa) is located to particulate cellular fractions.

Images



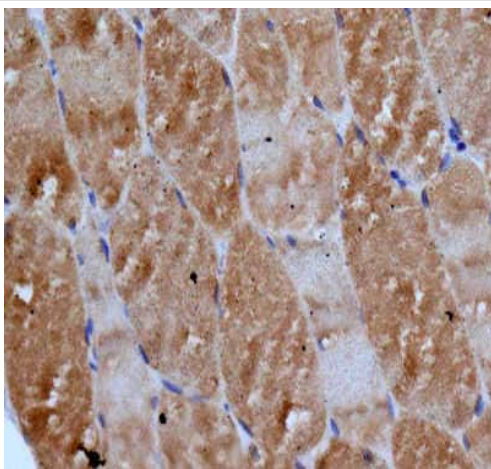
Western blot - Anti-PDE7A/HCP1 antibody
[EPR7731] (ab154857)

Anti-PDE7A/HCP1 antibody [EPR7731] (ab154857) at 1/1000 dilution + HuT78 cell lysate at 10 μ g

Secondary

Goat anti-rabbit HRP at 1/2000 dilution

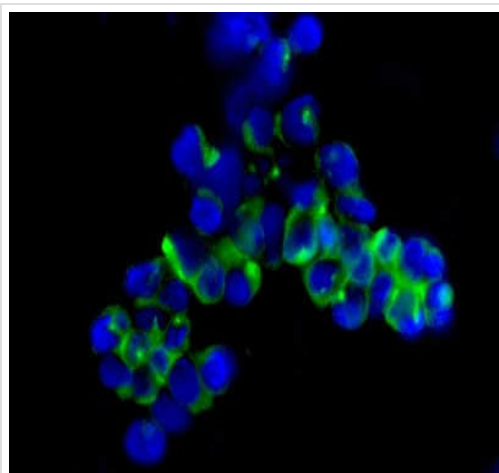
Predicted band size: 56 kDa



Immunohistochemistry (Formalin/PFA-fixed paraffin-embedded sections) - Anti-PDE7A/HCP1 antibody
[EPR7731] (ab154857)

Immunohistochemical analysis of paraffin-embedded Human skeletal muscle tissue labeling PDE7A/HCP1 with ab154857 at 1/100 dilution.

Perform heat mediated antigen retrieval before commencing with IHC staining protocol.



Immunofluorescent analysis of HuT78 cells labeling PDE7A/HCP1 with ab154857 at 1/250 dilution.

Immunocytochemistry/ Immunofluorescence - Anti-PDE7A/HCP1 antibody [EPR7731] (ab154857)

Why choose a recombinant antibody?



Research with confidence
Consistent and reproducible results



Long-term and scalable supply
Recombinant technology



Success from the first experiment
Confirmed specificity



Ethical standards compliant
Animal-free production

Anti-PDE7A/HCP1 antibody [EPR7731] (ab154857)

Please note: All products are "FOR RESEARCH USE ONLY. NOT FOR USE IN DIAGNOSTIC PROCEDURES"

Our Abpromise to you: Quality guaranteed and expert technical support

- Replacement or refund for products not performing as stated on the datasheet
- Valid for 12 months from date of delivery
- Response to your inquiry within 24 hours
- We provide support in Chinese, English, French, German, Japanese and Spanish

- Extensive multi-media technical resources to help you
- We investigate all quality concerns to ensure our products perform to the highest standards

If the product does not perform as described on this datasheet, we will offer a refund or replacement. For full details of the Abpromise, please visit <https://www.abcam.com/abpromise> or contact our technical team.

Terms and conditions

- Guarantee only valid for products bought direct from Abcam or one of our authorized distributors