


### Anti-PDE8A antibody ab227092

1 Image

#### Overview

<b>Product name</b>	Anti-PDE8A antibody
<b>Description</b>	Rabbit polyclonal to PDE8A
<b>Host species</b>	Rabbit
<b>Tested applications</b>	<b>Suitable for:</b> ICC/IF
<b>Species reactivity</b>	<b>Reacts with:</b> Human <b>Predicted to work with:</b> Rhesus monkey 
<b>Immunogen</b>	Recombinant fragment within Human PDE8A (internal sequence). The exact sequence is proprietary. Database link: <a href="#">O60658</a>
<b>Positive control</b>	ICC/IF: HepG2 cells.
<b>General notes</b>	<p>The Life Science industry has been in the grips of a reproducibility crisis for a number of years. Abcam is leading the way in addressing this with our range of recombinant monoclonal antibodies and knockout edited cell lines for gold-standard validation. Please check that this product meets your needs before purchasing.</p> <p>If you have any questions, special requirements or concerns, please send us an inquiry and/or contact our Support team ahead of purchase. Recommended alternatives for this product can be found below, along with publications, customer reviews and Q&amp;As</p>

#### Properties

<b>Form</b>	Liquid
<b>Storage instructions</b>	Shipped at 4°C. Store at +4°C short term (1-2 weeks). Upon delivery aliquot. Store at -20°C long term. Avoid freeze / thaw cycle.
<b>Storage buffer</b>	pH: 7.00 Preservative: 0.01% Thimerosal (merthiolate) Constituents: 79.99% PBS, 20% Glycerol (glycerin, glycerine)
<b>Purity</b>	Immunogen affinity purified
<b>Clonality</b>	Polyclonal
<b>Isotype</b>	IgG

## Applications

### The Abpromise guarantee

Our **Abpromise guarantee** covers the use of ab227092 in the following tested applications.

The application notes include recommended starting dilutions; optimal dilutions/concentrations should be determined by the end user.

Application	Abreviews	Notes
ICC/IF		1/100 - 1/1000.

## Target

### Function

Hydrolyzes the second messenger cAMP, which is a key regulator of many important physiological processes. May be involved in maintaining basal levels of the cyclic nucleotide and/or in the cAMP regulation of germ cell development.

### Tissue specificity

Expressed in most tissues except thymus and peripheral blood leukocytes. Highest levels in testis, ovary, small intestine and colon.

### Pathway

Purine metabolism; 3',5'-cyclic AMP degradation; AMP from 3',5'-cyclic AMP: step 1/1.

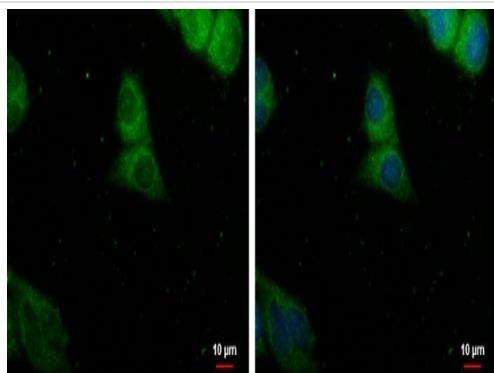
### Sequence similarities

Belongs to the cyclic nucleotide phosphodiesterase family. PDE8 subfamily.  
Contains 1 PAC (PAS-associated C-terminal) domain.  
Contains 1 PAS (PER-ARNT-SIM) domain.

### Domain

Composed of a C-terminal catalytic domain containing two putative divalent metal sites and an N-terminal regulatory domain.

## Images



Ice-cold methanol-fixed HepG2 (human liver hepatocellular carcinoma cell line) cells stained for PDE8A (green) using ab227092 at 1/500 dilution in ICC/IF. Nuclear Counterstain: Hoechst 33342 (blue).

Immunocytochemistry/ Immunofluorescence - Anti-PDE8A antibody (ab227092)

**Please note:** All products are "FOR RESEARCH USE ONLY. NOT FOR USE IN DIAGNOSTIC PROCEDURES"

## Our Abpromise to you: Quality guaranteed and expert technical support

- Replacement or refund for products not performing as stated on the datasheet
- Valid for 12 months from date of delivery

- Response to your inquiry within 24 hours
- We provide support in Chinese, English, French, German, Japanese and Spanish
- Extensive multi-media technical resources to help you
- We investigate all quality concerns to ensure our products perform to the highest standards

If the product does not perform as described on this datasheet, we will offer a refund or replacement. For full details of the Abpromise, please visit <https://www.abcam.com/abpromise> or contact our technical team.

#### **Terms and conditions**

---

- Guarantee only valid for products bought direct from Abcam or one of our authorized distributors