




Product datasheet

Anti-PDE9A antibody ab168432

[2 Images](#)

Overview

Product name	Anti-PDE9A antibody
Description	Mouse polyclonal to PDE9A
Host species	Mouse
Tested applications	Suitable for: WB, ICC/IF
Species reactivity	Reacts with: Human Predicted to work with: Mouse 
Immunogen	Recombinant full length protein, corresponding to amino acids 1-533 of Human PDE9A (NP_001001567.1). Run BLAST with  Run BLAST with 
Positive control	PDE9A transfected 293T cell line; HeLa cells.
General notes	<p>The Life Science industry has been in the grips of a reproducibility crisis for a number of years. Abcam is leading the way in addressing this with our range of recombinant monoclonal antibodies and knockout edited cell lines for gold-standard validation. Please check that this product meets your needs before purchasing.</p> <p>If you have any questions, special requirements or concerns, please send us an inquiry and/or contact our Support team ahead of purchase. Recommended alternatives for this product can be found below, along with publications, customer reviews and Q&As</p>

Properties

Form	Liquid
Storage instructions	Shipped at 4°C. Store at +4°C short term (1-2 weeks). Upon delivery aliquot. Store at -20°C long term.
Storage buffer	pH: 7.4 Constituent: 100% PBS
Purity	Protein A purified
Clonality	Polyclonal
Isotype	IgG

Applications

The Abpromise guarantee

Our **Abpromise guarantee** covers the use of ab168432 in the following tested applications.

The application notes include recommended starting dilutions; optimal dilutions/concentrations should be determined by the end user.

Application	Abreviews	Notes
WB		Use a concentration of 1 µg/ml. Predicted molecular weight: 68 kDa.
ICC/IF		Use a concentration of 10 µg/ml.

Target

Function

Hydrolyzes the second messenger cGMP, which is a key regulator of many important physiological processes.

Tissue specificity

Expressed in all tissues examined (testis, brain, small intestine, skeletal muscle, heart, lung, thymus, spleen, placenta, kidney, liver, pancreas, ovary and prostate) except blood. Highest levels in brain, heart, kidney, spleen, prostate and colon. Isoform PDE9A12 is found in prostate.

Sequence similarities

Belongs to the cyclic nucleotide phosphodiesterase family. PDE9 subfamily.

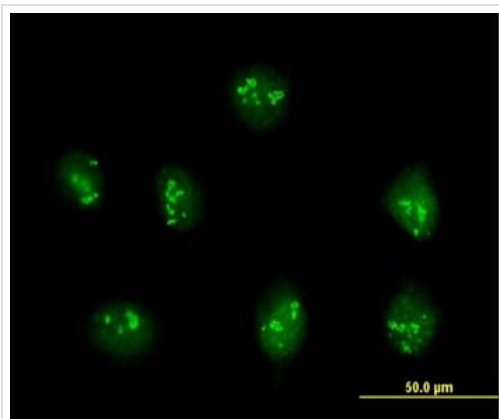
Domain

Composed of a C-terminal catalytic domain containing two putative divalent metal sites and an N-terminal regulatory domain.

Cellular localization

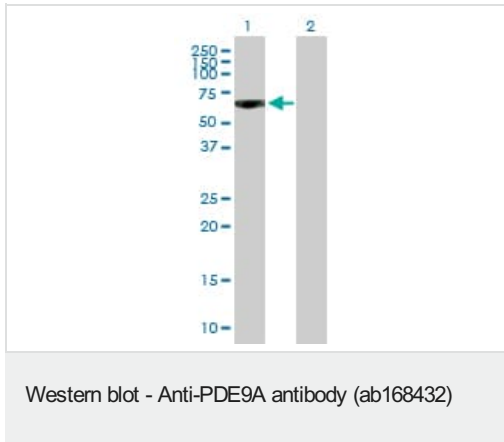
Cytoplasm. Endoplasmic reticulum; Cell projection > ruffle membrane. Cytoplasm > perinuclear region and Cell projection > ruffle membrane. Cytoplasm > perinuclear region. Golgi apparatus. Endoplasmic reticulum.

Images



Immunofluorescence analysis of HeLa cells labeling PDE9A with ab168432 at 10µg/ml.

Immunocytochemistry/ Immunofluorescence - Anti-PDE9A antibody (ab168432)



All lanes : Anti-PDE9A antibody (ab168432) at 1 µg/ml

Lane 1 : PDE9A transfected 293T lysate

Lane 2 : Non-transfected 293T lysate

Lysates/proteins at 15 µl per lane.

Predicted band size: 68 kDa

Please note: All products are "FOR RESEARCH USE ONLY. NOT FOR USE IN DIAGNOSTIC PROCEDURES"

Our Abpromise to you: Quality guaranteed and expert technical support

- Replacement or refund for products not performing as stated on the datasheet
- Valid for 12 months from date of delivery
- Response to your inquiry within 24 hours
- We provide support in Chinese, English, French, German, Japanese and Spanish
- Extensive multi-media technical resources to help you
- We investigate all quality concerns to ensure our products perform to the highest standards

If the product does not perform as described on this datasheet, we will offer a refund or replacement. For full details of the Abpromise, please visit <https://www.abcam.com/abpromise> or contact our technical team.

Terms and conditions

- Guarantee only valid for products bought direct from Abcam or one of our authorized distributors