


Product datasheet

Anti-PDIA2/PDIP antibody ab110195

[1 References](#) [3 Images](#)

Overview

Product name	Anti-PDIA2/PDIP antibody
Description	Goat polyclonal to PDIA2/PDIP
Host species	Goat
Tested applications	Suitable for: WB, IHC-P
Species reactivity	Reacts with: Human Predicted to work with: Mouse, Rat 
Immunogen	Synthetic peptide corresponding to Human PDIA2/PDIP aa 300-400 (internal sequence). Database link: Q13087 Run BLAST with Run BLAST with
Positive control	Human Heart and Human Small Intestine tissue. Human Pancreas lysate
General notes	<p>The Life Science industry has been in the grips of a reproducibility crisis for a number of years. Abcam is leading the way in addressing this with our range of recombinant monoclonal antibodies and knockout edited cell lines for gold-standard validation. Please check that this product meets your needs before purchasing.</p> <p>If you have any questions, special requirements or concerns, please send us an inquiry and/or contact our Support team ahead of purchase. Recommended alternatives for this product can be found below, along with publications, customer reviews and Q&As</p>

Properties

Form	Liquid
Storage instructions	Shipped at 4°C. Upon delivery aliquot and store at -20°C. Avoid freeze / thaw cycles.
Storage buffer	pH: 7.30 Preservative: 0.02% Sodium azide Constituents: 0.5% BSA, Tris buffered saline
Purity	Immunogen affinity purified
Clonality	Polyclonal
Isotype	IgG

Applications

The Abpromise guarantee

Our **Abpromise guarantee** covers the use of ab110195 in the following tested applications.

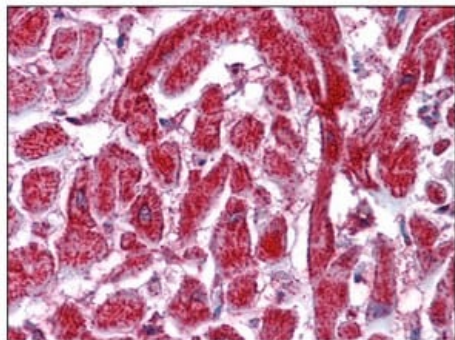
The application notes include recommended starting dilutions; optimal dilutions/concentrations should be determined by the end user.

Application	Abreviews	Notes
WB		Use a concentration of 0.01 - 0.03 µg/ml. Predicted molecular weight: 57 kDa.
IHC-P		Use a concentration of 3.75 µg/ml.

Target

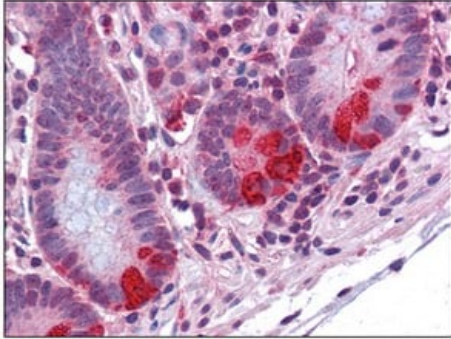
Function	Acts as an intracellular estrogen-binding protein. May be involved in modulating cellular levels and biological functions of estrogens in the pancreas. May act as a chaperone that inhibits aggregation of misfolded proteins.
Tissue specificity	Highly expressed in pancreas (at protein level).
Sequence similarities	Belongs to the protein disulfide isomerase family. Contains 2 thioredoxin domains.
Post-translational modifications	The disulfide-linked homodimer exhibits an enhanced chaperone activity. Glycosylated.
Cellular localization	Endoplasmic reticulum lumen.

Images



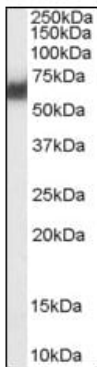
ab110195 at 3.75 µg/ml staining PDIA2/PDIP in Human Heart Formalin-Fixed, Paraffin-Embedded tissue.

Immunohistochemistry (Formalin/PFA-fixed paraffin-embedded sections) - Anti-PDIA2/PDIP antibody (ab110195)



Immunohistochemistry (Formalin/PFA-fixed paraffin-embedded sections) - Anti-PDIA2/PDIP antibody (ab110195)

ab110195 at 3.75 µg/ml staining PDIA2/PDIP in Human small intestine Formalin-Fixed, Paraffin-Embedded tissue.



Western blot - Anti-PDIA2/PDIP antibody (ab110195)

Anti-PDIA2/PDIP antibody (ab110195) at 0.03 µg/ml + Human Pancreas lysate at 35 µg

Developed using the ECL technique.

Predicted band size: 57 kDa

Primary incubation was 1 hour

Please note: All products are "FOR RESEARCH USE ONLY. NOT FOR USE IN DIAGNOSTIC PROCEDURES"

Our Abpromise to you: Quality guaranteed and expert technical support

- Replacement or refund for products not performing as stated on the datasheet
- Valid for 12 months from date of delivery
- Response to your inquiry within 24 hours
- We provide support in Chinese, English, French, German, Japanese and Spanish
- Extensive multi-media technical resources to help you
- We investigate all quality concerns to ensure our products perform to the highest standards

If the product does not perform as described on this datasheet, we will offer a refund or replacement. For full details of the Abpromise, please visit <https://www.abcam.com/abpromise> or contact our technical team.

Terms and conditions

- Guarantee only valid for products bought direct from Abcam or one of our authorized distributors