

Anti-PDLIM1/CLP36 antibody [EPR7186(B)] - BSA and Azide free ab240039

Recombinant RabMAb

4 Images

Overview

Product name	Anti-PDLIM1/CLP36 antibody [EPR7186(B)] - BSA and Azide free
Description	Rabbit monoclonal [EPR7186(B)] to PDLIM1/CLP36 - BSA and Azide free
Host species	Rabbit
Tested applications	Suitable for: Flow Cyt (Intra), ICC/IF, WB Unsuitable for: IHC-P
Species reactivity	Reacts with: Mouse, Rat, Human
Immunogen	Synthetic peptide. This information is proprietary to Abcam and/or its suppliers.
Positive control	ICC/IF: 293T cells
General notes	ab240039 is the carrier-free version of ab129015 .

Our **carrier-free** antibodies are typically supplied in a PBS-only formulation, purified and free of BSA, sodium azide and glycerol. The carrier-free buffer and high concentration allow for increased conjugation efficiency.

This conjugation-ready format is designed for use with fluorochromes, metal isotopes, oligonucleotides, and enzymes, which makes them ideal for antibody labelling, functional and cell-based assays, flow-based assays (e.g. mass cytometry) and Multiplex Imaging applications.

Use our **conjugation kits** for antibody conjugates that are ready-to-use in as little as 20 minutes with <1 minute hands-on-time and 100% antibody recovery: available for fluorescent dyes, HRP, biotin and gold.

This product is compatible with the Maxpar[®] Antibody Labeling Kit from Fluidigm, without the need for antibody preparation. Maxpar[®] is a trademark of Fluidigm Canada Inc.

This product is a recombinant monoclonal antibody, which offers several advantages including:

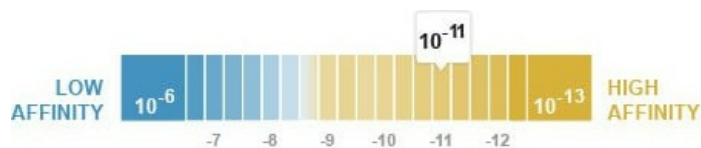
- High batch-to-batch consistency and reproducibility
- Improved sensitivity and specificity
- Long-term security of supply
- Animal-free production

For more information [see here](#).

Our RabMAb[®] technology is a patented hybridoma-based technology for making rabbit monoclonal antibodies. For details on our patents, please refer to [RabMAb[®] patents](#).

Properties

Form	Liquid
Storage instructions	Shipped at 4°C. Store at +4°C. Do Not Freeze.
Dissociation constant (K_D)	$K_D = 9.54 \times 10^{-11} \text{ M}$



[Learn more about \$K_D\$](#)

Storage buffer	pH: 7.2 Constituent: PBS
Carrier free	Yes
Purity	Protein A purified
Clonality	Monoclonal
Clone number	EPR7186(B)
Isotype	IgG

Applications

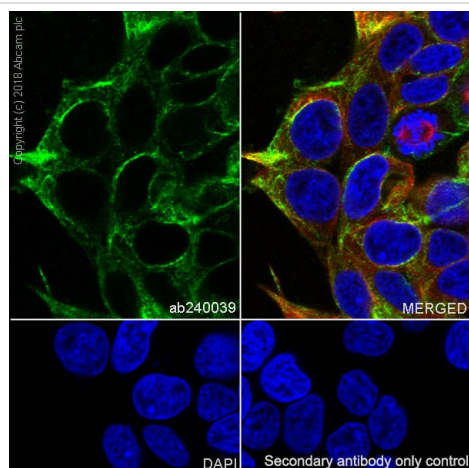
The Abpromise guarantee Our **Abpromise guarantee** covers the use of ab240039 in the following tested applications. The application notes include recommended starting dilutions; optimal dilutions/concentrations should be determined by the end user.

Application	Abreviews	Notes
Flow Cyt (Intra)		Use at an assay dependent concentration. ab199376 - Rabbit monoclonal IgG, is suitable for use as an isotype control with this antibody.
ICC/IF		Use at an assay dependent concentration.
WB		Use at an assay dependent concentration. Detects a band of approximately 36 kDa (predicted molecular weight: 36 kDa).

Application notes Is unsuitable for IHC-P.

Target

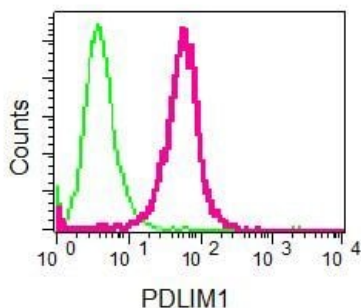
Function	Cytoskeletal protein that may act as an adapter that brings other proteins (like kinases) to the cytoskeleton.
Tissue specificity	Strongly expressed in the heart and skeletal muscle, moderately expressed in the spleen, small intestine, colon, placenta, and lung. A lower level expression is seen in liver, thymus, kidney, prostate and pancreas and is not found in the brain, testis, ovary, and peripheral blood leukocytes.
Sequence similarities	Contains 1 LIM zinc-binding domain. Contains 1 PDZ (DHR) domain.
Cellular localization	Cytoplasm. Cytoplasm > cytoskeleton. Associates with the actin stress fibers.



Immunocytochemistry/ Immunofluorescence - Anti-PDLIM1/CLP36 antibody [EPR7186(B)] - BSA and Azide free (ab240039)

Immunocytochemistry/ Immunofluorescence analysis of 293T (human embryonic kidney epithelial cell) cells labeling PDLIM1/CLP36 with purified **ab129015** at 1/100 dilution (10 µg/mL). Cells were fixed in 4% Paraformaldehyde and permeabilized with 0.1% tritonX-100. Cells were counterstained with **ab195889** Anti-alpha Tubulin antibody [DM1A] - Microtubule Marker (Alexa Fluor® 594) 1/200 (2.5 µg/mL). Goat anti rabbit IgG (Alexa Fluor® 488, **ab150077**) was used as the secondary antibody at 1/1000 (2 µg/mL) dilution. DAPI (blue) was used as nuclear counterstain. **ab195889** Anti-alpha Tubulin antibody [DM1A] - Microtubule Marker (Alexa Fluor® 594) 1/200 (2.5 µg/mL) was used as the secondary antibody only control.

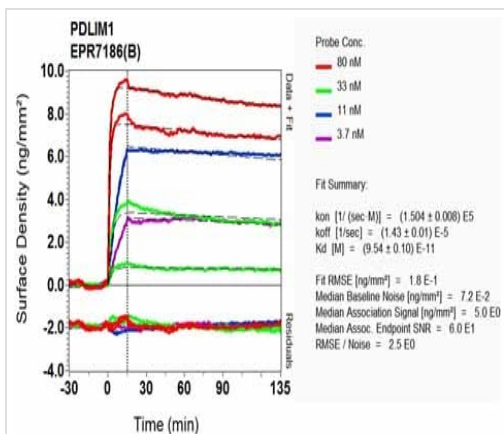
This data was developed using the same antibody clone in a different buffer formulation containing PBS, BSA, glycerol, and sodium azide (**ab129015**).



Flow Cytometry (Intracellular) - Anti-PDLIM1/CLP36 antibody [EPR7186(B)] - BSA and Azide free (ab240039)

ab129015, at 1/100 dilution, staining PDLIM1/CLP36 in permeabilized Saos 2 cells by intracellular flow cytometry or a Rabbit IgG negative control (green).

This data was developed using the same antibody clone in a different buffer formulation containing PBS, BSA, glycerol, and sodium azide (**ab129015**).



SPR Scanning - Anti-PDLIM1/CLP36 antibody
[EPR7186(B)] - BSA and Azide free (ab240039)

Equilibrium dissociation constant (K_D)

Learn more about K_D

[Click here to learn more about \$K_D\$](#)

This data was developed using the same antibody clone in a different buffer formulation containing PBS, BSA, glycerol, and sodium azide ([ab129015](#)).

Why choose a
recombinant antibody?



**Research with
confidence**
Consistent and
reproducible results



**Long-term and
scalable supply**
Recombinant
technology



**Success from the
first experiment**
Confirmed
specificity



**Ethical standards
compliant**
Animal-free
production

Anti-PDLIM1/CLP36 antibody [EPR7186(B)] - BSA
and Azide free (ab240039)

Please note: All products are "FOR RESEARCH USE ONLY. NOT FOR USE IN DIAGNOSTIC PROCEDURES"

Our Abpromise to you: Quality guaranteed and expert technical support

- Replacement or refund for products not performing as stated on the datasheet
- Valid for 12 months from date of delivery
- Response to your inquiry within 24 hours
- We provide support in Chinese, English, French, German, Japanese and Spanish
- Extensive multi-media technical resources to help you
- We investigate all quality concerns to ensure our products perform to the highest standards

If the product does not perform as described on this datasheet, we will offer a refund or replacement. For full details of the Abpromise, please visit <https://www.abcam.com/abpromise> or contact our technical team.

Terms and conditions

- Guarantee only valid for products bought direct from Abcam or one of our authorized distributors