

Product datasheet

Anti-PDP2 antibody [MS41A 3C3BC10] ab133982

[2 References](#) [1 Image](#)

Overview

Product name	Anti-PDP2 antibody [MS41A 3C3BC10]
Description	Mouse monoclonal [MS41A 3C3BC10] to PDP2
Host species	Mouse
Specificity	ab133982 does not react with Human Recombinant PDP1 or Human Recombinant PDK.
Tested applications	Suitable for: WB
Species reactivity	Reacts with: Human Does not react with: Mouse, Rat
Immunogen	Full length protein. This information is considered to be commercially sensitive.
Positive control	Recombinant PDP2 protein, Human heart or liver homogenate, HeLa, HEK293, HepG2 and jurkat whole cell lysate.
General notes	<p>This antibody clone is manufactured by Abcam. If you require a custom buffer formulation or conjugation for your experiments, please contact orders@abcam.com.</p> <p>The Life Science industry has been in the grips of a reproducibility crisis for a number of years. Abcam is leading the way in addressing this with our range of recombinant monoclonal antibodies and knockout edited cell lines for gold-standard validation. Please check that this product meets your needs before purchasing.</p> <p>If you have any questions, special requirements or concerns, please send us an inquiry and/or contact our Support team ahead of purchase. Recommended alternatives for this product can be found below, along with publications, customer reviews and Q&As</p> <p>Product was previously marketed under the MitoSciences sub-brand.</p>

Properties

Form	Liquid
Storage instructions	Shipped at 4°C. Store at +4°C short term (1-2 weeks). Store at -20°C or -80°C. Avoid freeze / thaw cycle.
Storage buffer	pH: 7.5 Preservative: 0.02% Sodium azide Constituent: 99% HEPES buffered saline
Purity	Ammonium Sulphate Precipitation

Purification notes	Near homogeneity as judged by SDS-PAGE. ab133982 was produced in vitro using hybridomas grown in serum-free medium, and then concentrated by ammonium sulfate precipitation.
Clonality	Monoclonal
Clone number	MS41A 3C3BC10
Isotype	IgG2a
Light chain type	kappa

Applications

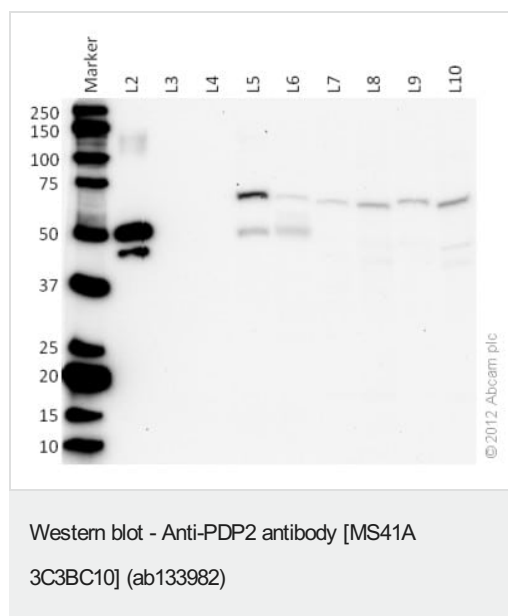
The Abpromise guarantee Our **Abpromise guarantee** covers the use of ab133982 in the following tested applications. The application notes include recommended starting dilutions; optimal dilutions/concentrations should be determined by the end user.

Application	Abreviews	Notes
WB		Use a concentration of 1 µg/ml. Detects a band of approximately 60 kDa (predicted molecular weight: 60 kDa). Note: This antibody works optimally in 5% Milk for all blocking and antibody steps.

Target

Function	Catalyzes the dephosphorylation and concomitant reactivation of the alpha subunit of the E1 component of the pyruvate dehydrogenase complex.
Sequence similarities	Belongs to the PP2C family.
Cellular localization	Mitochondrion matrix.

Images



All lanes : Anti-PDP2 antibody [MS41A 3C3BC10] (ab133982) at 1 µg/ml

Lane 1 : Molecular weight marker

Lane 2 : Recombinant human PDP2 protein ([ab110358](#)) at 0.01 µg

Lane 3 : Recombinant Human PDP1/PDP protein (His tag) ([ab110357](#)) at 0.01 µg

Lane 4 : Recombinant human PDK1 protein ([ab110359](#)) at 0.01 µg

Lane 5 : HHH (Human heart homogenate) at 20 µg

Lane 6 : HLH (Human liver homogenate) at 20 µg

Lane 7 : HeLa (Human epithelial carcinoma cell line) Whole Cell Lysate at 10 µg

Lane 8 : HEK293 (Human embryonic kidney 293 cell line) Whole

Cell Lysate at 10 µg

Lane 9 : HepG2 (Human hepatocellular carcinoma cell line) Whole

Cell Lysate at 10 µg

Lane 10 : Jurkat (Human T cell lymphoblast-like cell line) Whole

Cell Lysate at 10 µg

Secondary

All lanes : Goat polyclonal to Mouse IgG – H&L – Pre-Adsorbed (HRP) at 1/10000 dilution

Developed using the ECL technique.

Performed under reducing conditions.

Predicted band size: 60 kDa

Observed band size: 60 kDa

Exposure time: 5 minutes

Predicted mature band size: 52 kDa

Observed band size: 52 kDa

Note: The antibody recognizes both the mature (52 kDa) and the immature (60 kDa) versions of PDP2 protein. The immunogen was mature PDP2 protein, lacking the first 66 amino acids which are used as a transit peptide for mitochondrial targeting. The antibody produces a band against the endogenous protein at the mature weight in tissue homogenates, but not in cancer cells where the protein may fail to mature.

Please note: All products are "FOR RESEARCH USE ONLY. NOT FOR USE IN DIAGNOSTIC PROCEDURES"

Our Abpromise to you: Quality guaranteed and expert technical support

- Replacement or refund for products not performing as stated on the datasheet
- Valid for 12 months from date of delivery
- Response to your inquiry within 24 hours
- We provide support in Chinese, English, French, German, Japanese and Spanish
- Extensive multi-media technical resources to help you
- We investigate all quality concerns to ensure our products perform to the highest standards

If the product does not perform as described on this datasheet, we will offer a refund or replacement. For full details of the Abpromise,

please visit <https://www.abcam.com/abpromise> or contact our technical team.

Terms and conditions

- Guarantee only valid for products bought direct from Abcam or one of our authorized distributors