


Anti-PDZ-RhoGEF antibody ab110059

[3 References](#) [1 Image](#)

Overview

Product name	Anti-PDZ-RhoGEF antibody
Description	Rabbit polyclonal to PDZ-RhoGEF
Host species	Rabbit
Tested applications	Suitable for: WB
Species reactivity	Reacts with: Human Predicted to work with: Mouse, Rat 
Immunogen	Synthetic peptide corresponding to Human PDZ-RhoGEF (N terminal).
Positive control	A549 and COLO cell extracts.
General notes	<p>The Life Science industry has been in the grips of a reproducibility crisis for a number of years. Abcam is leading the way in addressing this with our range of recombinant monoclonal antibodies and knockout edited cell lines for gold-standard validation. Please check that this product meets your needs before purchasing.</p> <p>If you have any questions, special requirements or concerns, please send us an inquiry and/or contact our Support team ahead of purchase. Recommended alternatives for this product can be found below, along with publications, customer reviews and Q&As</p>

Properties

Form	Liquid
Storage instructions	Shipped at 4°C. Store at -20°C. Stable for 12 months at -20°C.
Storage buffer	<p>pH: 7.40</p> <p>Preservative: 0.02% Sodium azide</p> <p>Constituents: PBS, 0.88% Sodium chloride, 50% Glycerol (glycerin, glycerine)</p>
Purity	PBS without Mg2+ and Ca2+
Purification notes	Immunogen affinity purified
Clonality	ab110059 was affinity-purified from rabbit antiserum by affinity-chromatography using epitope-specific immunogen.
Isotype	Polyclonal
	IgG

Applications

The Abpromise guarantee

Our **Abpromise guarantee** covers the use of ab110059 in the following tested applications.

The application notes include recommended starting dilutions; optimal dilutions/concentrations should be determined by the end user.

Application	Abreviews	Notes
WB		1/500 - 1/1000. Predicted molecular weight: 168 kDa.

Target

Function

May play a role in the regulation of RhoA GTPase by guanine nucleotide-binding alpha-12 (GNA12) and alpha-13 (GNA13). Acts as guanine nucleotide exchange factor (GEF) for RhoA GTPase and may act as GTPase-activating protein (GAP) for GNA12 and GNA13.

Tissue specificity

Ubiquitously expressed.

Sequence similarities

Contains 1 DH (DBL-homology) domain.
Contains 1 PDZ (DHR) domain.
Contains 1 PH domain.
Contains 1 RGSL (RGS-like) domain.

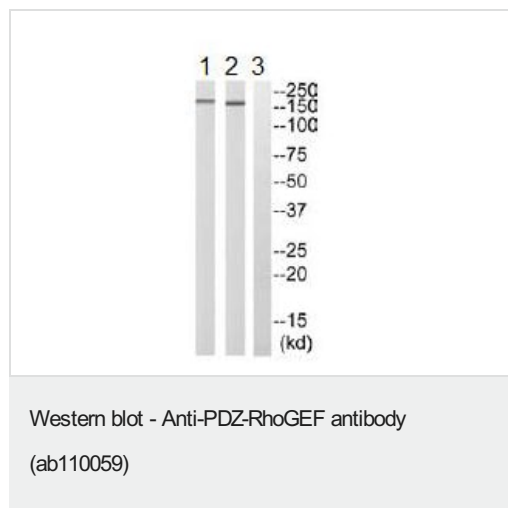
Domain

The poly-Pro region is essential for plasma membrane localization upon stimulation.

Cellular localization

Cytoplasm. Membrane. Translocated to the membrane upon stimulation.

Images



All lanes : Anti-PDZ-RhoGEF antibody (ab110059) at 1/500 dilution

Lane 1 : A549 cell extract

Lane 2 : COLO cell extract

Lane 3 : COLO cell extract with immunizing peptide

Lysates/proteins at 30 µg per lane.

Predicted band size: 168 kDa

Please note: All products are "FOR RESEARCH USE ONLY. NOT FOR USE IN DIAGNOSTIC PROCEDURES"

Our Abpromise to you: Quality guaranteed and expert technical support

- Replacement or refund for products not performing as stated on the datasheet
- Valid for 12 months from date of delivery
- Response to your inquiry within 24 hours

- We provide support in Chinese, English, French, German, Japanese and Spanish
- Extensive multi-media technical resources to help you
- We investigate all quality concerns to ensure our products perform to the highest standards

If the product does not perform as described on this datasheet, we will offer a refund or replacement. For full details of the Abpromise, please visit <https://www.abcam.com/abpromise> or contact our technical team.

Terms and conditions

- Guarantee only valid for products bought direct from Abcam or one of our authorized distributors