



Product datasheet

PE Anti-14-3-3 sigma/SFN antibody [02] ab275638

1 Image

Overview

Product name	PE Anti-14-3-3 sigma/SFN antibody [02]
Description	PE Mouse monoclonal [02] to 14-3-3 sigma/SFN
Host species	Mouse
Conjugation	PE. Ex: 488nm, Em: 575nm
Tested applications	Suitable for: Flow Cyt (Intra)
Species reactivity	Reacts with: Human
Immunogen	Recombinant full length protein corresponding to Human 14-3-3 sigma/SFN aa 1 to the C-terminus. Two additional amino acids (Gly and Pro) at the N-terminal. Database link: P31947
	<div>  Run BLAST with </div> <div>  Run BLAST with </div>
Positive control	Flow Cyt (Intra): HeLa cells.
General notes	<p>The Life Science industry has been in the grips of a reproducibility crisis for a number of years. Abcam is leading the way in addressing this with our range of recombinant monoclonal antibodies and knockout edited cell lines for gold-standard validation. Please check that this product meets your needs before purchasing.</p> <p>If you have any questions, special requirements or concerns, please send us an inquiry and/or contact our Support team ahead of purchase. Recommended alternatives for this product can be found below, along with publications, customer reviews and Q&As</p>

Properties

Form	Liquid
Storage instructions	Shipped at 4°C. Store at +4°C. Do Not Freeze. Store In the Dark.
Storage buffer	Preservative: 0.09% Sodium azide Constituent: 0.5% BSA
Purity	Protein A purified
Clonality	Monoclonal
Clone number	02
Isotype	IgG1

Applications

The Abpromise guarantee

Our **Abpromise guarantee** covers the use of ab275638 in the following tested applications.

The application notes include recommended starting dilutions; optimal dilutions/concentrations should be determined by the end user.

Application	Abreviews	Notes
Flow Cyt (Intra)		Use at an assay dependent concentration. 10 µl/Test

Target

Function

Adapter protein implicated in the regulation of a large spectrum of both general and specialized signaling pathways. Binds to a large number of partners, usually by recognition of a phosphoserine or phosphothreonine motif. Binding generally results in the modulation of the activity of the binding partner. When bound to KRT17, regulates protein synthesis and epithelial cell growth by stimulating Akt/mTOR pathway. May also regulate MDM2 autoubiquitination and degradation and thereby activate p53/TP53. p53-regulated inhibitor of G2/M progression.

Tissue specificity

Present mainly in tissues enriched in stratified squamous keratinizing epithelium.

Sequence similarities

Belongs to the 14-3-3 family.

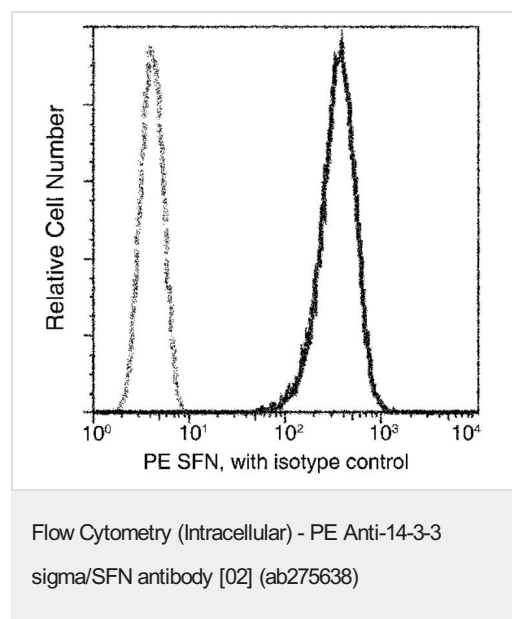
Post-translational modifications

Ubiquitinated. Ubiquitination by RFFL induces proteasomal degradation and indirectly regulates p53/TP53 activation.

Cellular localization

Cytoplasm. Nucleus. Secreted. May be secreted by a non-classical secretory pathway.

Images



Intracellular flow cytometric analysis of HeLa (human epithelial cell line from cervix adenocarcinoma) cells labeling SFN with ab275638 at 10 µl/Test (Black) compared with isotype control (Grey). The Fluorescence histograms were derived from gated events with the forward and side light-scatter characteristics of intact cells.

Please note: All products are "FOR RESEARCH USE ONLY. NOT FOR USE IN DIAGNOSTIC PROCEDURES"

Our Abpromise to you: Quality guaranteed and expert technical support

- Replacement or refund for products not performing as stated on the datasheet
- Valid for 12 months from date of delivery
- Response to your inquiry within 24 hours

- We provide support in Chinese, English, French, German, Japanese and Spanish
- Extensive multi-media technical resources to help you
- We investigate all quality concerns to ensure our products perform to the highest standards

If the product does not perform as described on this datasheet, we will offer a refund or replacement. For full details of the Abpromise, please visit <https://www.abcam.com/abpromise> or contact our technical team.

Terms and conditions

- Guarantee only valid for products bought direct from Abcam or one of our authorized distributors