

Product datasheet

PE Anti-6X His tag® antibody [AD1.1.10] ab72467

★★★★☆ [2 Abreviews](#) [13 References](#) [1 Image](#)

Overview

Product name	PE Anti-6X His tag® antibody [AD1.1.10]
Description	PE Mouse monoclonal [AD1.1.10] to 6X His tag®
Host species	Mouse
Conjugation	PE. Ex: 488nm, Em: 575nm
Tested applications	Suitable for: Flow Cyt
Species reactivity	Reacts with: Species independent
Immunogen	Synthetic peptide HHHHHH tag - tagged
General notes	<p>Excitation max. lambda: 565>498 nm Emission max. lambda: 578 nm F/P 1:1.</p> <p>The Life Science industry has been in the grips of a reproducibility crisis for a number of years. Abcam is leading the way in addressing this with our range of recombinant monoclonal antibodies and knockout edited cell lines for gold-standard validation. Please check that this product meets your needs before purchasing.</p> <p>If you have any questions, special requirements or concerns, please send us an inquiry and/or contact our Support team ahead of purchase. Recommended alternatives for this product can be found below, along with publications, customer reviews and Q&As</p>

Properties

Form	Liquid
Storage instructions	Shipped at 4°C. Store at +4°C.
Storage buffer	pH: 7.40 Preservative: 0.013% Sodium azide Constituents: 1.64% Sodium phosphate, 1.71% Sucrose, 0.1% BSA, 0.87% Sodium chloride
Purity	Size exclusion
Purification notes	Size exclusion chromatography as well as some proprietary methods for purifying the final materials were used.
Clonality	Monoclonal
Clone number	AD1.1.10
Isotype	IgG1

Applications

The Abpromise guarantee

Our **Abpromise guarantee** covers the use of ab72467 in the following tested applications.

The application notes include recommended starting dilutions; optimal dilutions/concentrations should be determined by the end user.

Application	Abreviews	Notes
Flow Cyt	★★★★☆ (2)	1/50 - 1/100. ab91357 - Mouse monoclonal IgG1, is suitable for use as an isotype control with this antibody.

Target

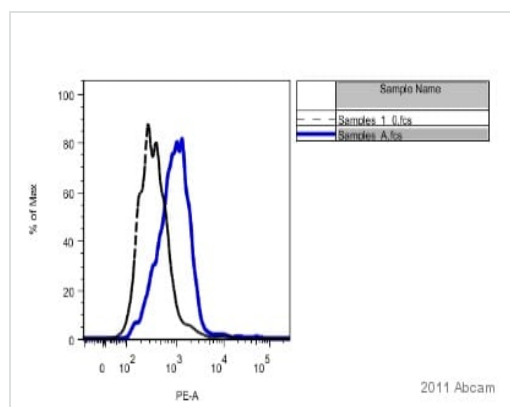
Relevance

The H-H-H-H-H-H motif is used as a tag on many recombinant proteins to facilitate purification. His-tags can be fused to the amino- or carboxy- termini of proteins in transfected or transformed cells.

Cellular localization

Depends upon the localization of the parent protein tagged with hexahistidine.

Images



Flow Cytometry - PE Anti-6XHis tag® antibody

[AD1.1.10] (ab72467)

This image is courtesy of an Anonymous Abreview.

BALB-3T3 cells, which express moderate amounts of EGFR, were incubated with a His6-tagged anti-EGFR fibronectin domain. The labeled cells were washed and incubated with 50 microliters of 1:15 diluted PE-conjugated anti-His6 antibody. Cells were washed and analyzed by flow cytometry. A control without fibronectin domain was also analyzed. Image: Dashed black line is control without fibronectin. Solid blue line is sample with His6-tagged anti-EGFR fibronectin domain.

Please note: All products are "FOR RESEARCH USE ONLY. NOT FOR USE IN DIAGNOSTIC PROCEDURES"

Our Abpromise to you: Quality guaranteed and expert technical support

- Replacement or refund for products not performing as stated on the datasheet
- Valid for 12 months from date of delivery
- Response to your inquiry within 24 hours
- We provide support in Chinese, English, French, German, Japanese and Spanish
- Extensive multi-media technical resources to help you

- We investigate all quality concerns to ensure our products perform to the highest standards

If the product does not perform as described on this datasheet, we will offer a refund or replacement. For full details of the Abpromise, please visit <https://www.abcam.com/abpromise> or contact our technical team.

Terms and conditions

- Guarantee only valid for products bought direct from Abcam or one of our authorized distributors