


Product datasheet

PE Anti-Annexin-2/ANXA2 antibody [EPR13052(B)] ab210729

Recombinant RabMAb

2 Images

Overview

Product name	PE Anti-Annexin-2/ANXA2 antibody [EPR13052(B)]
Description	PE Rabbit monoclonal [EPR13052(B)] to Annexin-2/ANXA2
Host species	Rabbit
Conjugation	PE. Ex: 488nm, Em: 575nm
Tested applications	Suitable for: Flow Cyt (Intra)
Species reactivity	Reacts with: Human Predicted to work with: Mouse, Rat 
Immunogen	Synthetic peptide. This information is proprietary to Abcam and/or its suppliers.
Positive control	Flow Cyt (intra): HeLa cells.
General notes	<p>This product is a recombinant monoclonal antibody, which offers several advantages including:</p> <ul style="list-style-type: none"> - High batch-to-batch consistency and reproducibility - Improved sensitivity and specificity - Long-term security of supply - Animal-free production <p>For more information see here.</p> <p>Our RabMAb[®] technology is a patented hybridoma-based technology for making rabbit monoclonal antibodies. For details on our patents, please refer to RabMAb[®] patents.</p>

Properties

Form	Liquid
Storage instructions	Shipped at 4°C. Upon delivery aliquot. Store at +4°C. Do Not Freeze. Store In the Dark.
Storage buffer	pH: 7.4 Preservative: 0.02% Sodium azide Constituents: PBS, 1% BSA
Purity	Protein A purified
Clonality	Monoclonal

Clone number EPR13052(B)
Isotype IgG

Applications

The Abpromise guarantee Our **Abpromise guarantee** covers the use of ab210729 in the following tested applications. The application notes include recommended starting dilutions; optimal dilutions/concentrations should be determined by the end user.

Application	Abreviews	Notes
Flow Cyt (Intra)		1/5000. The cellular localisation of this product has been verified in ICC/IF

Target

Function Calcium-regulated membrane-binding protein whose affinity for calcium is greatly enhanced by anionic phospholipids. It binds two calcium ions with high affinity. May be involved in heat-stress response.

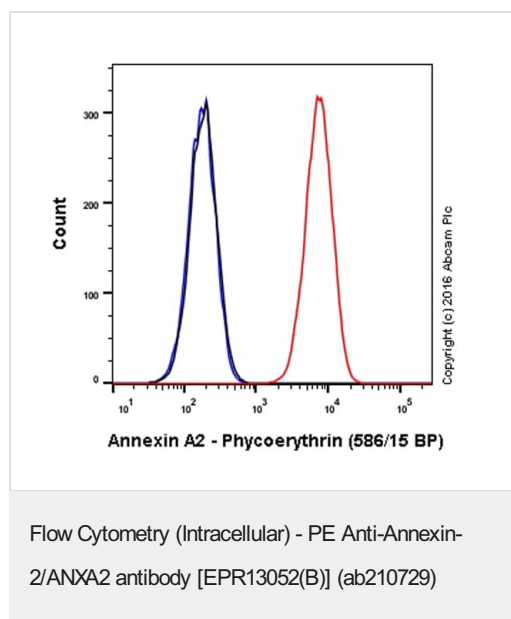
Sequence similarities Belongs to the annexin family.
Contains 4 annexin repeats.

Domain A pair of annexin repeats may form one binding site for calcium and phospholipid.

Post-translational modifications Phosphorylation of Tyr-24 enhances heat stress-induced translocation to the cell surface. ISGylated.

Cellular localization Secreted > extracellular space > extracellular matrix > basement membrane. Melanosome. In the lamina beneath the plasma membrane. Identified by mass spectrometry in melanosome fractions from stage I to stage IV. Translocated from the cytoplasm to the cell surface through a Golgi-independent mechanism.

Images



Overlay histogram showing HeLa cells stained with ab210729 (red line). The cells were fixed with 4% formaldehyde (10 min) and then permeabilized with 90% methanol for 30 min at -20°C. The cells were then incubated in 1x PBS / 10% normal goat serum to block non-specific protein-protein interactions followed by the antibody (ab210729, 1/5000 dilution) for 30 min at 22°C.

Isotype control antibody (black line) was rabbit IgG (monoclonal) Phycoerythrin (**ab209478**) used at the same concentration and conditions as the primary antibody. Unlabelled sample (blue line) was also used as a control.

Acquisition of >5,000 events were collected using a 50 mW Yellow/Green laser (561nm) and 586/15 bandpass filter.

Why choose a recombinant antibody?



Research with confidence
Consistent and reproducible results



Long-term and scalable supply
Recombinant technology



Success from the first experiment
Confirmed specificity



Ethical standards compliant
Animal-free production

PE Anti-Annexin-2/ANXA2 antibody [EPR13052(B)]
(ab210729)

Please note: All products are "FOR RESEARCH USE ONLY. NOT FOR USE IN DIAGNOSTIC PROCEDURES"

Our Abpromise to you: Quality guaranteed and expert technical support

- Replacement or refund for products not performing as stated on the datasheet
- Valid for 12 months from date of delivery
- Response to your inquiry within 24 hours
- We provide support in Chinese, English, French, German, Japanese and Spanish
- Extensive multi-media technical resources to help you
- We investigate all quality concerns to ensure our products perform to the highest standards

If the product does not perform as described on this datasheet, we will offer a refund or replacement. For full details of the Abpromise, please visit <https://www.abcam.com/abpromise> or contact our technical team.

Terms and conditions

- Guarantee only valid for products bought direct from Abcam or one of our authorized distributors