

Product datasheet

PE Anti-B Cell antibody [CA2.1D6] ab34124

[1 Image](#)

Overview

Product name	PE Anti-B Cell antibody [CA2.1D6]
Description	PE Mouse monoclonal [CA2.1D6] to B Cell
Host species	Mouse
Conjugation	PE. Ex: 488nm, Em: 575nm
Specificity	This antibody is specific for a cell surface antigen expressed by canine B lymphocytes.
Tested applications	Suitable for: Flow Cyt
Species reactivity	Reacts with: Horse, Cat, Dog
Immunogen	Tissue, cells or virus corresponding to Dog B Cell. B cells (Dog)
General notes	<p>Purified IgG conjugated to R. Phycoerythrin (RPE).</p> <p>The Life Science industry has been in the grips of a reproducibility crisis for a number of years. Abcam is leading the way in addressing this with our range of recombinant monoclonal antibodies and knockout edited cell lines for gold-standard validation. Please check that this product meets your needs before purchasing.</p> <p>If you have any questions, special requirements or concerns, please send us an inquiry and/or contact our Support team ahead of purchase. Recommended alternatives for this product can be found below, along with publications, customer reviews and Q&As</p>

Properties

Form	Liquid
Storage instructions	Shipped at 4°C. Store at +4°C.
Storage buffer	<p>pH: 7.40</p> <p>Preservative: 0.09% Sodium azide</p> <p>Constituents: PBS, 1% BSA</p>
Purity	Protein G purified
Clonality	Monoclonal
Clone number	CA2.1D6
Isotype	IgG1

Applications

The Abpromise guarantee

Our **Abpromise guarantee** covers the use of ab34124 in the following tested applications.

The application notes include recommended starting dilutions; optimal dilutions/concentrations should be determined by the end user.

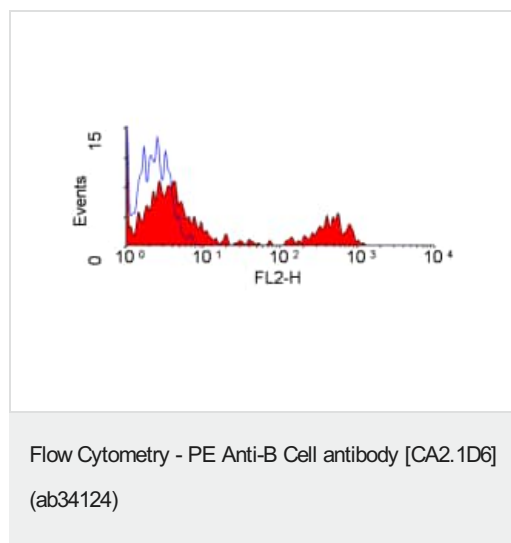
Application	Abreviews	Notes
Flow Cyt		Use 10µl for 10 ⁶ cells. Use 10ul of neat antibody to label 10 ⁶ cells or cells or 100µl whole blood.

Target

Relevance

B cells are lymphocytes that are produced in the bone marrow and require bone marrow stromal cells and their cytokines for maturation. During its development, each B cell becomes genetically programmed through a series of gene splicing reactions to produce an antibody molecule with a unique specificity.

Images



ab34124 neat, staining canine peripheral blood lymphocytes using FACS.

Please note: All products are "FOR RESEARCH USE ONLY. NOT FOR USE IN DIAGNOSTIC PROCEDURES"

Our Abpromise to you: Quality guaranteed and expert technical support

- Replacement or refund for products not performing as stated on the datasheet
- Valid for 12 months from date of delivery
- Response to your inquiry within 24 hours
- We provide support in Chinese, English, French, German, Japanese and Spanish
- Extensive multi-media technical resources to help you
- We investigate all quality concerns to ensure our products perform to the highest standards

If the product does not perform as described on this datasheet, we will offer a refund or replacement. For full details of the Abpromise, please visit <https://www.abcam.com/abpromise> or contact our technical team.

Terms and conditions

- Guarantee only valid for products bought direct from Abcam or one of our authorized distributors