

Product datasheet

PE Anti-CCR7 antibody [4B12] ab95669

[1 References](#) [1 Image](#)

Overview

Product name	PE Anti-CCR7 antibody [4B12]
Description	PE Rat monoclonal [4B12] to CCR7
Host species	Rat
Conjugation	PE. Ex: 488nm, Em: 575nm
Specificity	ab95669 stains Mouse CCR7-GFP fusion protein-transfected RBL cells
Tested applications	Suitable for: Flow Cyt
Species reactivity	Reacts with: Mouse
Immunogen	Tissue, cells or virus corresponding to CCR7. CCR7 Rat basophilic leukaemia (RBL)-2H3 transfectants.
Positive control	C57BL/6, Balb/C and SJL/J splenocytes and thymocytes.
General notes	Excitation: 488 nm Emission: 575 nm. The Life Science industry has been in the grips of a reproducibility crisis for a number of years. Abcam is leading the way in addressing this with our range of recombinant monoclonal antibodies and knockout edited cell lines for gold-standard validation. Please check that this product meets your needs before purchasing. If you have any questions, special requirements or concerns, please send us an inquiry and/or contact our Support team ahead of purchase. Recommended alternatives for this product can be found below, along with publications, customer reviews and Q&As

Properties

Form	Liquid
Storage instructions	Shipped at 4°C. Store at +4°C.
Storage buffer	pH: 7.20 Preservative: 0.09% Sodium azide Constituents: 0.87% Sodium chloride, PBS
Purity	Protein G purified
Clonality	Monoclonal
Clone number	4B12
Myeloma	x63-Ag8.653

Isotype	IgG2a
Light chain type	kappa

Applications

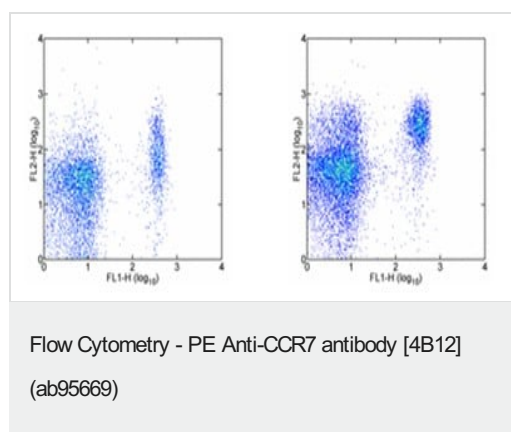
The Abpromise guarantee Our **Abpromise guarantee** covers the use of ab95669 in the following tested applications. The application notes include recommended starting dilutions; optimal dilutions/concentrations should be determined by the end user.

Application	Abreviews	Notes
Flow Cyt		Use 1-5µg for 10 ⁶ cells. ab134674 - Rat monoclonal IgG2a, is suitable for use as an isotype control with this antibody.

Target

Function	Receptor for the MIP-3-beta chemokine. Probable mediator of EBV effects on B-lymphocytes or of normal lymphocyte functions.
Tissue specificity	Expressed in various lymphoid tissues and activated B- and T-lymphocytes, strongly up-regulated in B-cells infected with Epstein-Barr virus and T-cells infected with herpesvirus 6 or 7.
Sequence similarities	Belongs to the G-protein coupled receptor 1 family.
Cellular localization	Cell membrane.

Images



Staining of C57BL/6 splenocytes with Anti-Mouse CD4 FITC and 0.5 µg of ab95669 with staining carried out at 4 °C (left) or 37 °C (right). Cells in the lymphocyte gate were used for analysis

Please note: All products are "FOR RESEARCH USE ONLY. NOT FOR USE IN DIAGNOSTIC PROCEDURES"

Our Abpromise to you: Quality guaranteed and expert technical support

- Replacement or refund for products not performing as stated on the datasheet
- Valid for 12 months from date of delivery
- Response to your inquiry within 24 hours

- We provide support in Chinese, English, French, German, Japanese and Spanish
- Extensive multi-media technical resources to help you
- We investigate all quality concerns to ensure our products perform to the highest standards

If the product does not perform as described on this datasheet, we will offer a refund or replacement. For full details of the Abpromise, please visit <https://www.abcam.com/abpromise> or contact our technical team.

Terms and conditions

- Guarantee only valid for products bought direct from Abcam or one of our authorized distributors