

PE Anti-CD151 antibody [50-6] ab253266

[1 Image](#)

Overview

Product name	PE Anti-CD151 antibody [50-6]
Description	PE Mouse monoclonal [50-6] to CD151
Host species	Mouse
Conjugation	PE. Ex: 488nm, Em: 575nm
Tested applications	Suitable for: Flow Cyt
Species reactivity	Reacts with: Human
Immunogen	Tissue, cells or virus corresponding to CD151. Human epidermoid carcinoma cell line Hep-3.
Positive control	Flow Cyt: Human peripheral blood.
General notes	<p>The Life Science industry has been in the grips of a reproducibility crisis for a number of years. Abcam is leading the way in addressing this with our range of recombinant monoclonal antibodies and knockout edited cell lines for gold-standard validation. Please check that this product meets your needs before purchasing.</p> <p>If you have any questions, special requirements or concerns, please send us an inquiry and/or contact our Support team ahead of purchase. Recommended alternatives for this product can be found below, along with publications, customer reviews and Q&As</p>

Properties

Form	Liquid
Storage instructions	Shipped at 4°C. Store at +4°C. Store In the Dark.
Storage buffer	<p>pH: 7.4</p> <p>Preservative: 0.0975% Sodium azide</p> <p>Constituent: PBS</p>
Purity	Size exclusion
Purification notes	The purified antibody is conjugated with R-Phycoerythrin (PE) under optimum conditions. The conjugate is purified by size-exclusion chromatography and adjusted for direct use.
Clonality	Monoclonal
Clone number	50-6
Isotype	IgG1

Applications

The Abpromise guarantee

Our **Abpromise guarantee** covers the use of ab253266 in the following tested applications.

The application notes include recommended starting dilutions; optimal dilutions/concentrations should be determined by the end user.

Application	Abreviews	Notes
Flow Cyt		Use 10µl for 10 ⁶ cells. Or 100 µl of whole blood.

Target

Function

Essential for the proper assembly of the glomerular and tubular basement membranes in kidney.

Tissue specificity

Expressed in a variety of tissues including vascular endothelium and epidermis. Expressed on erythroid cells, with a higher level of expression in erythroid precursors than on mature erythrocytes.

Involvement in disease

Defects in CD151 are the cause of nephropathy with pretibial epidermolysis bullosa and deafness (NPEBD) [MIM:609057]. NPEBD is characterized by the association of hereditary nephritis, epidermolysis bullosa, deafness, and beta-thalassemia minor.

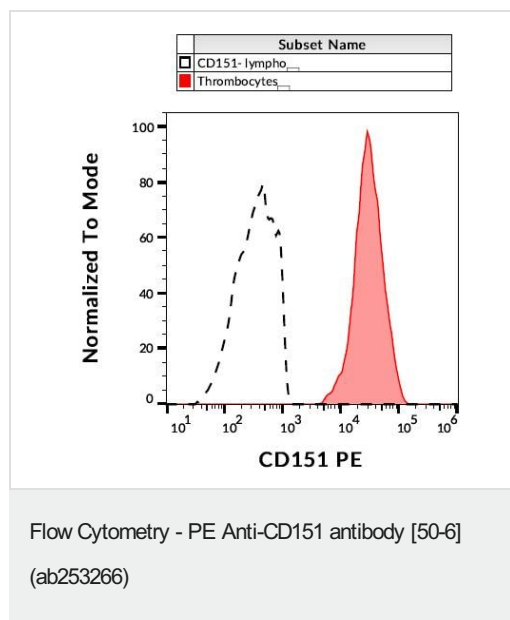
Sequence similarities

Belongs to the tetraspanin (TM4SF) family.

Cellular localization

Membrane.

Images



Flow Cytometry analysis of human peripheral blood labeling CD151 with ab253266. Surface staining.

Please note: All products are "FOR RESEARCH USE ONLY. NOT FOR USE IN DIAGNOSTIC PROCEDURES"

Our Abpromise to you: Quality guaranteed and expert technical support

- Replacement or refund for products not performing as stated on the datasheet

- Valid for 12 months from date of delivery
- Response to your inquiry within 24 hours
- We provide support in Chinese, English, French, German, Japanese and Spanish
- Extensive multi-media technical resources to help you
- We investigate all quality concerns to ensure our products perform to the highest standards

If the product does not perform as described on this datasheet, we will offer a refund or replacement. For full details of the Abpromise, please visit <https://www.abcam.com/abpromise> or contact our technical team.

Terms and conditions

- Guarantee only valid for products bought direct from Abcam or one of our authorized distributors