

## Product datasheet

### PE Anti-CD200 / OX2 antibody [MRC OX90] ab33739

[1 References](#) [1 Image](#)

#### Overview

<b>Product name</b>	PE Anti-CD200 / OX2 antibody [MRC OX90]
<b>Description</b>	PE Rat monoclonal [MRC OX90] to CD200 / OX2
<b>Host species</b>	Rat
<b>Conjugation</b>	PE. Ex: 488nm, Em: 575nm
<b>Specificity</b>	Recognises the mouse CD200 cell surface antigen, also known as OX2.
<b>Tested applications</b>	<b>Suitable for:</b> Flow Cyt
<b>Species reactivity</b>	<b>Reacts with:</b> Mouse
<b>Immunogen</b>	Fusion protein corresponding to Mouse CD200/ OX2. Database link: <a href="#">Q54901</a>
<b>Positive control</b>	CD200 is expressed by splenic B lymphocytes, follicular dendritic cells, splenic endothelium and by neurons.
<b>General notes</b>	Purified IgG conjugated to R. Phycoerythrin (RPE).  The Life Science industry has been in the grips of a reproducibility crisis for a number of years. Abcam is leading the way in addressing this with our range of recombinant monoclonal antibodies and knockout edited cell lines for gold-standard validation. Please check that this product meets your needs before purchasing.  If you have any questions, special requirements or concerns, please send us an inquiry and/or contact our Support team ahead of purchase. Recommended alternatives for this product can be found below, along with publications, customer reviews and Q&As

#### Properties

<b>Form</b>	Liquid
<b>Storage instructions</b>	Shipped at 4°C. Store at +4°C.
<b>Storage buffer</b>	Preservative: 0.09% Sodium azide Constituents: PBS, 1% BSA
<b>Purity</b>	Protein G purified
<b>Purification notes</b>	Purified IgG prepared by affinity chromatography on Protein G from tissue culture supernatant.
<b>Clonality</b>	Monoclonal
<b>Clone number</b>	MRC OX90

<b>Myeloma</b>	Y3/Ag1.2.3
<b>Isotype</b>	IgG2a

## Applications

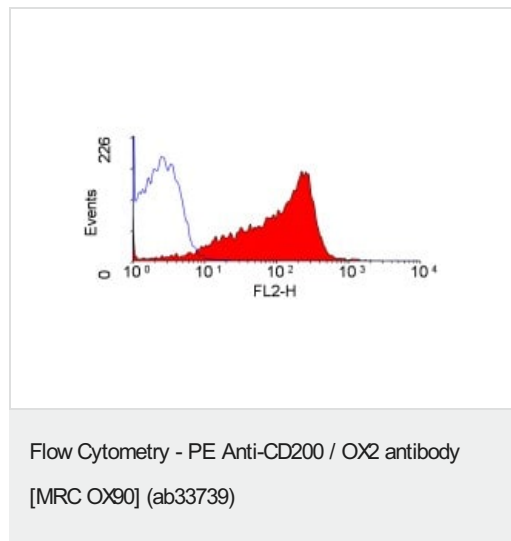
**The Abpromise guarantee** Our **Abpromise guarantee** covers the use of ab33739 in the following tested applications. The application notes include recommended starting dilutions; optimal dilutions/concentrations should be determined by the end user.

Application	Abreviews	Notes
<b>Flow Cyt</b>		Use 10µl for 10 <sup>6</sup> cells. Use 10µl for 10 <sup>6</sup> cells in 100µl. The Fc region of monoclonal antibodies may bind non-specifically to cells expressing low affinity fc receptors.

## Target

<b>Function</b>	Costimulates T-cell proliferation. May regulate myeloid cell activity in a variety of tissues.
<b>Sequence similarities</b>	Contains 1 Ig-like C2-type (immunoglobulin-like) domain. Contains 1 Ig-like V-type (immunoglobulin-like) domain.
<b>Cellular localization</b>	Cell membrane.

## Images



ab33739 staining of mouse splenocytes.

**Please note:** All products are "FOR RESEARCH USE ONLY. NOT FOR USE IN DIAGNOSTIC PROCEDURES"

## Our Abpromise to you: Quality guaranteed and expert technical support

- Replacement or refund for products not performing as stated on the datasheet

- Valid for 12 months from date of delivery
- Response to your inquiry within 24 hours
- We provide support in Chinese, English, French, German, Japanese and Spanish
- Extensive multi-media technical resources to help you
- We investigate all quality concerns to ensure our products perform to the highest standards

If the product does not perform as described on this datasheet, we will offer a refund or replacement. For full details of the Abpromise, please visit <https://www.abcam.com/abpromise> or contact our technical team.

#### **Terms and conditions**

---

- Guarantee only valid for products bought direct from Abcam or one of our authorized distributors