

Product datasheet

PE Anti-CD300 α antibody [MEM-260], prediluted ab64675

[1 Image](#)

Overview

Product name	PE Anti-CD300a antibody [MEM-260], prediluted
Description	PE Mouse monoclonal [MEM-260] to CD300a, prediluted
Host species	Mouse
Conjugation	PE. Ex: 488nm, Em: 575nm
Tested applications	Suitable for: Flow Cyt
Species reactivity	Reacts with: Human
Immunogen	Tissue, cells or virus corresponding to Human CD300a. HPB human acute lymphoid leukemia cell line

General notes

The Life Science industry has been in the grips of a reproducibility crisis for a number of years. Abcam is leading the way in addressing this with our range of recombinant monoclonal antibodies and knockout edited cell lines for gold-standard validation. Please check that this product meets your needs before purchasing.

If you have any questions, special requirements or concerns, please send us an inquiry and/or contact our Support team ahead of purchase. Recommended alternatives for this product can be found below, along with publications, customer reviews and Q&As

Properties

Form	Liquid
Storage instructions	Shipped at 4°C. Store at +4°C.
Storage buffer	pH: 7.4 Preservative: 0.097% Sodium azide Constituents: PBS, 0.2% BSA
Purity	Size exclusion
Purification notes	The purified antibody (>95% by SDS-PAGE) is conjugated with R-Phycoerythrin (PE) under optimum conditions. The conjugate is purified by size-exclusion chromatography and adjusted for direct use.
Clonality	Monoclonal
Clone number	MEM-260

Isotype

IgG1

Applications

The Abpromise guarantee

Our **Abpromise guarantee** covers the use of ab64675 in the following tested applications.

The application notes include recommended starting dilutions; optimal dilutions/concentrations should be determined by the end user.

Application	Abreviews	Notes
Flow Cyt		Use 20µl for 10 ⁶ cells. (or 100µl of whole blood). ab01257 Mouse monoclonal IgG1 is suitable for use as an

Target

Function

Inhibitory receptor which may contribute to the down-regulation of cytolytic activity in natural killer (NK) cells, and to the down-regulation of mast cell degranulation.

Tissue specificity

Expressed not only by natural killer (NK) cells but also by T-cell subsets, B-cells, dendritic cells, mast cells, granulocytes and monocytes.

Sequence similarities

Belongs to the CD300 family.
Contains 1 Ig-like V-type (immunoglobulin-like) domain.

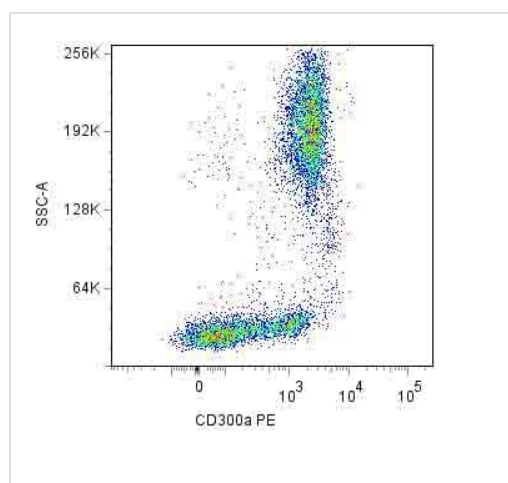
Post-translational modifications

Phosphorylated on tyrosine.

Cellular localization

Cell membrane.

Images



ab64675 at 20ul/100ul sample staining CD300a in human peripheral blood cells by Flow Cytometry.

Flow Cytometry - PE Anti-CD300a antibody [MEM-260], prediluted (ab64675)

Please note: All products are "FOR RESEARCH USE ONLY. NOT FOR USE IN DIAGNOSTIC PROCEDURES"

Our Abpromise to you: Quality guaranteed and expert technical support

- Replacement or refund for products not performing as stated on the datasheet
- Valid for 12 months from date of delivery
- Response to your inquiry within 24 hours

- We provide support in Chinese, English, French, German, Japanese and Spanish
- Extensive multi-media technical resources to help you
- We investigate all quality concerns to ensure our products perform to the highest standards

If the product does not perform as described on this datasheet, we will offer a refund or replacement. For full details of the Abpromise, please visit <https://www.abcam.com/abpromise> or contact our technical team.

Terms and conditions

- Guarantee only valid for products bought direct from Abcam or one of our authorized distributors