

## Product datasheet

### PE Anti-CD68 antibody [FA-11] ab216701

Recombinant

1 Image

#### Overview

<b>Product name</b>	PE Anti-CD68 antibody [FA-11]
<b>Description</b>	PE Rat monoclonal [FA-11] to CD68
<b>Host species</b>	Rat
<b>Conjugation</b>	PE. Ex: 488nm, Em: 575nm
<b>Tested applications</b>	<b>Suitable for:</b> Flow Cyt (Intra)
<b>Species reactivity</b>	<b>Reacts with:</b> Mouse
<b>Immunogen</b>	Full length native protein (purified). This information is proprietary to Abcam and/or its suppliers.
<b>Positive control</b>	Flow Cyt (Intra): Raw264.7 cells
<b>General notes</b>	<p>This product is a recombinant monoclonal antibody, which offers several advantages including:</p> <ul style="list-style-type: none"> <li>- High batch-to-batch consistency and reproducibility</li> <li>- Improved sensitivity and specificity</li> <li>- Long-term security of supply</li> <li>- Animal-free production</li> </ul> <p>For more information <a href="#">see here</a>.</p> <p>Our RabMAb<sup>®</sup> technology is a patented hybridoma-based technology for making rabbit monoclonal antibodies. For details on our patents, please refer to <a href="#">RabMAb<sup>®</sup> patents</a>.</p>

#### Properties

<b>Form</b>	Liquid
<b>Storage instructions</b>	Shipped at 4°C. Upon delivery aliquot. Store at +4°C. Do Not Freeze. Store In the Dark.
<b>Storage buffer</b>	<p>pH: 7.4</p> <p>Preservative: 0.02% Sodium azide</p> <p>Constituents: 1% BSA, PBS</p>
<b>Purity</b>	Immunogen affinity purified
<b>Purification notes</b>	Purified IgG prepared by affinity chromatography on Protein G from tissue culture supernatant.
<b>Clonality</b>	Monoclonal
<b>Clone number</b>	FA-11
<b>Isotype</b>	IgG2a

## Applications

### The Abpromise guarantee

Our **Abpromise guarantee** covers the use of ab216701 in the following tested applications.

The application notes include recommended starting dilutions; optimal dilutions/concentrations should be determined by the end user.

Application	Abreviews	Notes
Flow Cyt (Intra)		1/1000. <b>The cellular localisation of this product has been verified in ICC/IF.</b>

## Target

### Function

Could play a role in phagocytic activities of tissue macrophages, both in intracellular lysosomal metabolism and extracellular cell-cell and cell-pathogen interactions. Binds to tissue- and organ-specific lectins or selectins, allowing homing of macrophage subsets to particular sites. Rapid recirculation of CD68 from endosomes and lysosomes to the plasma membrane may allow macrophages to crawl over selectin-bearing substrates or other cells.

### Tissue specificity

Highly expressed by blood monocytes and tissue macrophages. Also expressed in lymphocytes, fibroblasts and endothelial cells. Expressed in many tumor cell lines which could allow them to attach to selectins on vascular endothelium, facilitating their dissemination to secondary sites.

### Sequence similarities

Belongs to the LAMP family.

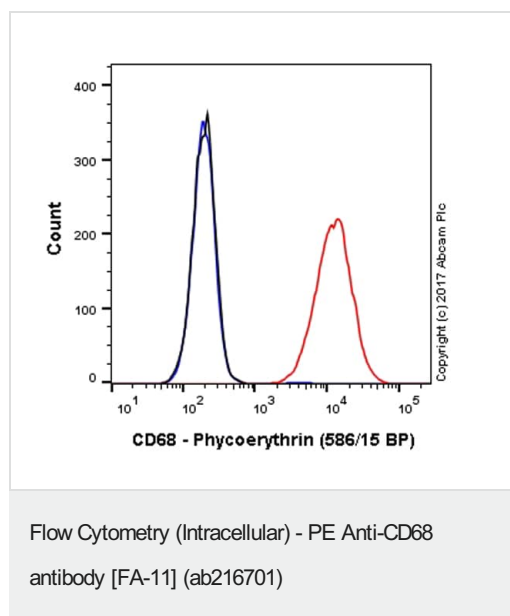
### Post-translational modifications

N- and O-glycosylated.

### Cellular localization

Cell membrane and Endosome membrane. Lysosome membrane.

## Images



Overlay histogram showing Raw264.7 cells stained with ab216701 (red line). The cells were fixed with 80% methanol (5 min) and then permeabilized with 0.1% PBS-Triton X-100 for 15 min. The cells were then incubated in 1x PBS / 10% normal goat serum to block non-specific protein-protein interactions followed by the antibody (ab216701, 1/1000 dilution) for 30 min at 22°C.

Isotype control antibody (black line) was Rabbit IgG (monoclonal) Phycoerythrin (**ab209478**) used at the same concentration and conditions as the primary antibody. Unlabelled sample (blue line) was also used as a control.

Acquisition of >5,000 events were collected using a 50 mW Yellow/Green laser (561nm) and 586/15 bandpass filter.

This antibody gave a positive signal in Raw264.7 cells fixed with 4% formaldehyde (10 min)/permeabilized with 0.1% PBS-Triton X-

100 for 15 min used under the same conditions.

**Please note:** All products are "FOR RESEARCH USE ONLY. NOT FOR USE IN DIAGNOSTIC PROCEDURES"

### **Our Abpromise to you: Quality guaranteed and expert technical support**

---

- Replacement or refund for products not performing as stated on the datasheet
- Valid for 12 months from date of delivery
- Response to your inquiry within 24 hours
- We provide support in Chinese, English, French, German, Japanese and Spanish
- Extensive multi-media technical resources to help you
- We investigate all quality concerns to ensure our products perform to the highest standards

If the product does not perform as described on this datasheet, we will offer a refund or replacement. For full details of the Abpromise, please visit <https://www.abcam.com/abpromise> or contact our technical team.

### **Terms and conditions**

---

- Guarantee only valid for products bought direct from Abcam or one of our authorized distributors