


### PE Anti-CD83 antibody [HB15e] ab234242

[1 Image](#)

#### Overview

<b>Product name</b>	PE Anti-CD83 antibody [HB15e]
<b>Description</b>	PE Mouse monoclonal [HB15e] to CD83
<b>Host species</b>	Mouse
<b>Conjugation</b>	PE. Ex: 488nm, Em: 575nm
<b>Tested applications</b>	<b>Suitable for:</b> Flow Cyt
<b>Species reactivity</b>	<b>Reacts with:</b> Human <b>Predicted to work with:</b> Non human primates 
<b>Immunogen</b>	Tissue, cells or virus corresponding to Human CD83. (Human CD83-transfected Cos cells).
<b>Positive control</b>	Flow Cyt: IFN gamma-activated human peripheral blood cells.
<b>General notes</b>	<p>The Life Science industry has been in the grips of a reproducibility crisis for a number of years. Abcam is leading the way in addressing this with our range of recombinant monoclonal antibodies and knockout edited cell lines for gold-standard validation. Please check that this product meets your needs before purchasing.</p> <p>If you have any questions, special requirements or concerns, please send us an inquiry and/or contact our Support team ahead of purchase. Recommended alternatives for this product can be found below, along with publications, customer reviews and Q&amp;As</p>

#### Properties

<b>Form</b>	Liquid
<b>Storage instructions</b>	Shipped at 4°C. Store at +4°C. Store In the Dark.
<b>Storage buffer</b>	pH: 7.4 Preservative: 0.0975% Sodium azide Constituent: PBS
<b>Purity</b>	Size exclusion
<b>Purification notes</b>	Purified antibody is conjugated with R-Phycoerythrin (PE) under optimum conditions. The conjugate is purified by size-exclusion chromatography and adjusted for direct use. No reconstitution is necessary.
<b>Clonality</b>	Monoclonal
<b>Clone number</b>	HB15e

Isotype

IgG1

## Applications

### The Abpromise guarantee

Our **Abpromise guarantee** covers the use of ab234242 in the following tested applications.

The application notes include recommended starting dilutions; optimal dilutions/concentrations should be determined by the end user.

Application	Abreviews	Notes
Flow Cyt		Use 10µl for 10 <sup>6</sup> cells. (or 100 µl of whole blood).

## Target

### Function

May play a significant role in antigen presentation or the cellular interactions that follow lymphocyte activation.

### Tissue specificity

Expressed by activated lymphocytes, Langerhans cells and interdigitating reticulum cells.

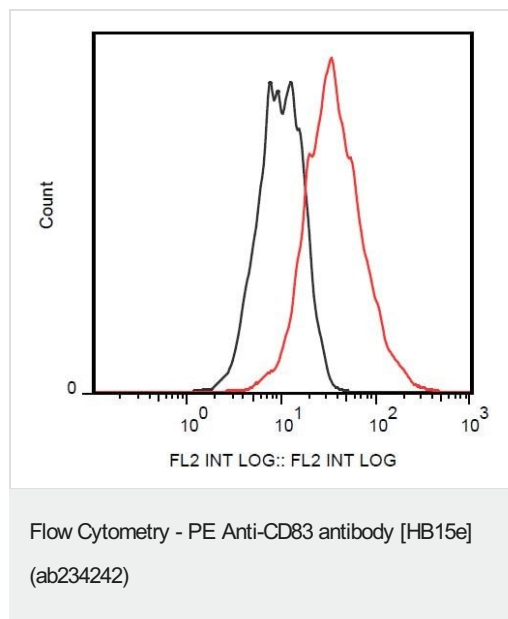
### Sequence similarities

Contains 1 Ig-like V-type (immunoglobulin-like) domain.

### Cellular localization

Membrane.

## Images



Flow cytometric analysis of IFN gamma-activated human peripheral blood cells labeling CD83 with ab234242. Surface staining. Gated on singlets.

**Please note:** All products are "FOR RESEARCH USE ONLY. NOT FOR USE IN DIAGNOSTIC PROCEDURES"

## Our Abpromise to you: Quality guaranteed and expert technical support

- Replacement or refund for products not performing as stated on the datasheet
- Valid for 12 months from date of delivery

- Response to your inquiry within 24 hours
- We provide support in Chinese, English, French, German, Japanese and Spanish
- Extensive multi-media technical resources to help you
- We investigate all quality concerns to ensure our products perform to the highest standards

If the product does not perform as described on this datasheet, we will offer a refund or replacement. For full details of the Abpromise, please visit <https://www.abcam.com/abpromise> or contact our technical team.

#### **Terms and conditions**

---

- Guarantee only valid for products bought direct from Abcam or one of our authorized distributors