

Product datasheet

PE Anti-CD90 / Thy1 antibody [5E10] ab95700

[4 References](#) [1 Image](#)

Overview

Product name	PE Anti-CD90 / Thy1 antibody [5E10]
Description	PE Mouse monoclonal [5E10] to CD90 / Thy1
Host species	Mouse
Conjugation	PE. Ex: 488nm, Em: 575nm
Tested applications	Suitable for: Flow Cyt
Species reactivity	Reacts with: Human
Immunogen	Tissue, cells or virus corresponding to Human CD90/ Thy1. Human erythroleukemia (HEL) cells.
Positive control	Human erythroleukemia (HEL) cells
General notes	<p>The Life Science industry has been in the grips of a reproducibility crisis for a number of years. Abcam is leading the way in addressing this with our range of recombinant monoclonal antibodies and knockout edited cell lines for gold-standard validation. Please check that this product meets your needs before purchasing.</p> <p>If you have any questions, special requirements or concerns, please send us an inquiry and/or contact our Support team ahead of purchase. Recommended alternatives for this product can be found below, along with publications, customer reviews and Q&As</p>

Properties

Form	Liquid
Storage instructions	Shipped at 4°C. Store at +4°C.
Storage buffer	pH: 7.20 Preservative: 0.09% Sodium azide
Purity	Protein G purified
Clonality	Monoclonal
Clone number	5E10
Isotype	IgG1
Light chain type	kappa

Applications

The Abpromise guarantee

Our **Abpromise guarantee** covers the use of ab95700 in the following tested applications.

The application notes include recommended starting dilutions; optimal dilutions/concentrations should be determined by the end user.

Application	Abreviews	Notes
Flow Cyt		Use 5µl for 10 ⁶ cells. ab91357 - Mouse monoclonal IgG1, is suitable for use as an isotype control with this antibody.

Target

Function

May play a role in cell-cell or cell-ligand interactions during synaptogenesis and other events in the brain.

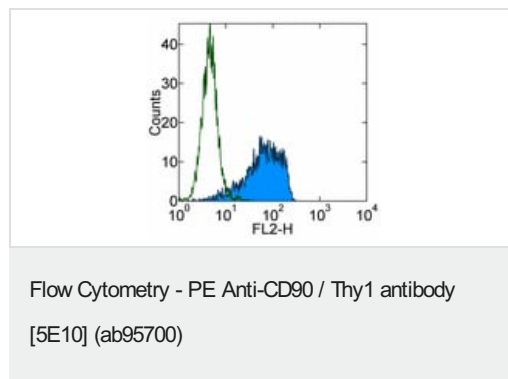
Sequence similarities

Contains 1 Ig-like V-type (immunoglobulin-like) domain.

Cellular localization

Cell membrane.

Images



Flow cytometry staining of Human erythroleukemia (HEL) cells with Mouse IgG1 ? Isotype Control PE (open histogram) or ab95700 (filled histogram). Total viable cells were used for analysis.

Please note: All products are "FOR RESEARCH USE ONLY. NOT FOR USE IN DIAGNOSTIC PROCEDURES"

Our Abpromise to you: Quality guaranteed and expert technical support

- Replacement or refund for products not performing as stated on the datasheet
- Valid for 12 months from date of delivery
- Response to your inquiry within 24 hours
- We provide support in Chinese, English, French, German, Japanese and Spanish
- Extensive multi-media technical resources to help you
- We investigate all quality concerns to ensure our products perform to the highest standards

If the product does not perform as described on this datasheet, we will offer a refund or replacement. For full details of the Abpromise, please visit <https://www.abcam.com/abpromise> or contact our technical team.

Terms and conditions

- Guarantee only valid for products bought direct from Abcam or one of our authorized distributors