



Product datasheet

PE Anti-eIF4EBP1 (phospho T37 + T46) antibody [4EB1T37T46-A5] ab278687

Recombinant

2 Images

Overview

Product name	PE Anti-eIF4EBP1 (phospho T37 + T46) antibody [4EB1T37T46-A5]
Description	PE Rabbit monoclonal [4EB1T37T46-A5] to eIF4EBP1 (phospho T37 + T46)
Host species	Rabbit
Conjugation	PE. Ex: 488nm, Em: 575nm
Tested applications	Suitable for: Flow Cyt
Species reactivity	Reacts with: Human
Immunogen	Synthetic peptide within Human eIF4EBP1 (phospho T37 + T46). The exact immunogen sequence used to generate this antibody is proprietary information. If additional detail on the immunogen is needed to determine the suitability of the antibody for your needs, please contact our Scientific Support team to discuss your requirements. Database link: Q13541
	 Run BLAST with  Run BLAST with
Positive control	Flow cyt: Jurkat cells treated with TPA.
General notes	This product is a recombinant monoclonal antibody, which offers several advantages including: <ul style="list-style-type: none"> - High batch-to-batch consistency and reproducibility - Improved sensitivity and specificity - Long-term security of supply - Animal-free production For more information see here .

Properties

Form	Liquid
Storage instructions	Shipped at 4°C. Store at +4°C. Store In the Dark.
Storage buffer	Preservative: 0.09% Sodium azide Constituents: 99.71% PBS, 0.2% BSA
Purity	Protein A/G purified
Clonality	Monoclonal

Clone number 4EB1T37T46-A5
Isotype IgG
Light chain type kappa

Applications

The Abpromise guarantee Our **Abpromise guarantee** covers the use of ab278687 in the following tested applications. The application notes include recommended starting dilutions; optimal dilutions/concentrations should be determined by the end user.

Application	Abreviews	Notes
Flow Cyt		Use 5µl for 10 ⁶ cells.

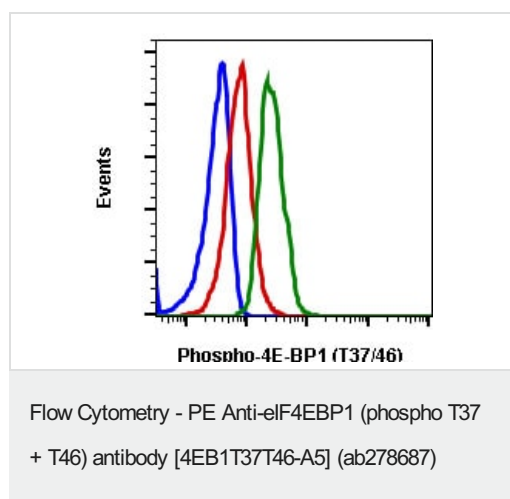
Target

Function Regulates eIF4E activity by preventing its assembly into the eIF4F complex. Mediates the regulation of protein translation by hormones, growth factors and other stimuli that signal through the MAP kinase and mTORC1 pathways.

Sequence similarities Belongs to the eIF4E-binding protein family.

Post-translational modifications Phosphorylated on serine and threonine residues in response to insulin, EGF and PDGF. Phosphorylation at Thr-37, Thr-46, Ser-65 and Thr-70 is regulated by mTORC1. Phosphorylated upon DNA damage, probably by ATM or ATR.

Images



Flow cytometric analysis of Jurkat cells unstained LY294002 treated cells as negative control (blue) or stained and treated with LY294002 (red) or with TPA (green) using ab278687.

Why choose a recombinant antibody?



Research with confidence
Consistent and reproducible results



Long-term and scalable supply
Recombinant technology



Success from the first experiment
Confirmed specificity



Ethical standards compliant
Animal-free production

PE Anti-eIF4EBP1 (phospho T37 + T46) antibody
[4EB1T37T46-A5] (ab278687)

Please note: All products are "FOR RESEARCH USE ONLY. NOT FOR USE IN DIAGNOSTIC PROCEDURES"

Our Abpromise to you: Quality guaranteed and expert technical support

- Replacement or refund for products not performing as stated on the datasheet
- Valid for 12 months from date of delivery
- Response to your inquiry within 24 hours
- We provide support in Chinese, English, French, German, Japanese and Spanish
- Extensive multi-media technical resources to help you
- We investigate all quality concerns to ensure our products perform to the highest standards

If the product does not perform as described on this datasheet, we will offer a refund or replacement. For full details of the Abpromise, please visit <https://www.abcam.com/abpromise> or contact our technical team.

Terms and conditions

- Guarantee only valid for products bought direct from Abcam or one of our authorized distributors