

Product datasheet

PE Anti-ENPP3/B10 antibody [NP4D6] ab90751

★★★★★ [3 Abreviews](#) [2 Images](#)

Overview

Product name	PE Anti-ENPP3/B10 antibody [NP4D6]
Description	PE Mouse monoclonal [NP4D6] to ENPP3/B10
Host species	Mouse
Conjugation	PE. Ex: 488nm, Em: 575nm
Tested applications	Suitable for: Flow Cyt, ICC/IF, Flow Cyt (Intra)
Species reactivity	Reacts with: Human
Immunogen	Tissue, cells or virus corresponding to Human ENPP3/B10. HEK-293 cells transfected with human ENPP3/B10 Database link: O14638
Positive control	Flow Cyt: human basophils. Flow Cyt (Intra): human blood cells ICC/IF: human basophils
General notes	<p>The purified antibody is conjugated with R-Phycoerythrin (PE) under optimum conditions.</p> <p>The Life Science industry has been in the grips of a reproducibility crisis for a number of years. Abcam is leading the way in addressing this with our range of recombinant monoclonal antibodies and knockout edited cell lines for gold-standard validation. Please check that this product meets your needs before purchasing.</p> <p>If you have any questions, special requirements or concerns, please send us an inquiry and/or contact our Support team ahead of purchase. Recommended alternatives for this product can be found below, along with publications, customer reviews and Q&As</p>

Properties

Form	Liquid
Storage instructions	Shipped at 4°C. Store at +4°C.
Storage buffer	pH: 7.4 Preservative: 0.097% Sodium azide Constituents: PBS, 0.2% BSA
Purity	Size exclusion
Purification notes	The unconjugated antibody was purified by protein A (G) affinity chromatography (>95% by SDS-PAGE). After conjugation, the antibody was purified by size-exclusion chromatography and adjusted for direct use.

Clonality	Monoclonal
Clone number	NP4D6
Isotype	IgG1

Applications

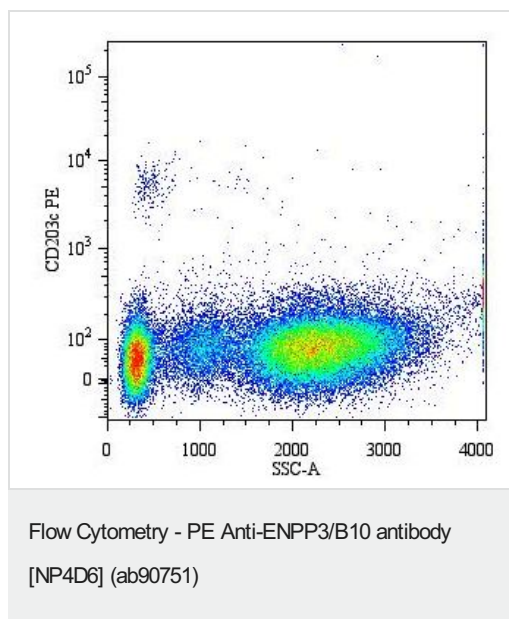
The Abpromise guarantee Our **Abpromise guarantee** covers the use of ab90751 in the following tested applications. The application notes include recommended starting dilutions; optimal dilutions/concentrations should be determined by the end user.

Application	Abreviews	Notes
Flow Cyt	★★★★★ (2)	Use 20µl for 10 ⁶ cells. ab91357 - Mouse monoclonal IgG1, is suitable for use as an isotype control with this antibody.
ICC/IF	★★★★★ (1)	Use at an assay dependent concentration.
Flow Cyt (Intra)		Use 20µl for 10 ⁶ cells. ab91357 - Mouse monoclonal IgG1, is suitable for use as an isotype control with this antibody.

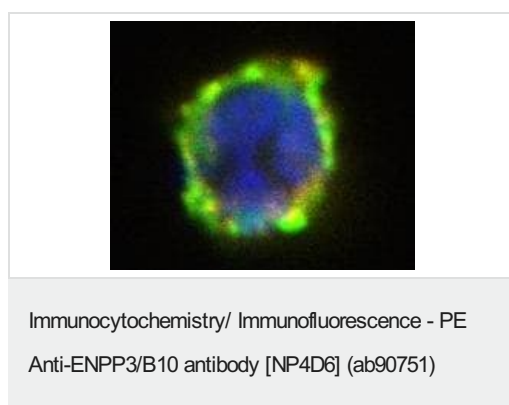
Target

Function	Cleaves a variety of phosphodiester and phosphosulfate bonds including deoxynucleotides, nucleotide sugars, and NAD.
Tissue specificity	Expressed in bile ducts, prostate, uterus and colon. Exclusively expressed on basophils, mast cells and their progenitors.
Sequence similarities	Belongs to the nucleotide pyrophosphatase/phosphodiesterase family. Contains 2 SMB (somatomedin-B) domains.
Post-translational modifications	N-glycosylation is necessary for correct trafficking to the apical surface, but is not the apical targeting signal. It has been suggested that the active SMB domain may be permitted considerable disulfide bond heterogeneity or variability, thus two alternate disulfide patterns based on 3D structures are described with 1 disulfide bond conserved in both.
Cellular localization	Membrane. Secreted. Located to the apical surface in intestinal and kidney epithelial cells. Located to the cell surface of basophils, and to the apical plasma membrane of bile duct cells. Secreted in serum, and in lumen of epithelial cells.

Images



ab90751 staining ENPP3/B10 on the surface of human basophils isolated from allergen-stimulated whole blood by flow cytometry.



Surface staining of activated human basophil by FITC-conjugated anti-CD63 (clone MEM-259, [ab18235](#), green) and PE-conjugated anti-ENPP3/B10 (clone NP4D6, ab90751, red); merged signal yellow. DNA visualized by DAPI (blue).

Please note: All products are "FOR RESEARCH USE ONLY. NOT FOR USE IN DIAGNOSTIC PROCEDURES"

Our Abpromise to you: Quality guaranteed and expert technical support

- Replacement or refund for products not performing as stated on the datasheet
- Valid for 12 months from date of delivery
- Response to your inquiry within 24 hours
- We provide support in Chinese, English, French, German, Japanese and Spanish
- Extensive multi-media technical resources to help you
- We investigate all quality concerns to ensure our products perform to the highest standards

If the product does not perform as described on this datasheet, we will offer a refund or replacement. For full details of the Abpromise, please visit <https://www.abcam.com/abpromise> or contact our technical team.

Terms and conditions

- Guarantee only valid for products bought direct from Abcam or one of our authorized distributors