

## Product datasheet

# PE Anti-F4/80 antibody [Cl:A3-1] ab105156

[7 References](#) [1 Image](#)

### Overview

---

<b>Product name</b>	PE Anti-F4/80 antibody [Cl:A3-1]
<b>Description</b>	PE Rat monoclonal [Cl:A3-1] to F4/80
<b>Host species</b>	Rat
<b>Conjugation</b>	PE. Ex: 488nm, Em: 575nm
<b>Specificity</b>	ab105156 recognises the murine F4/80 antigen.
<b>Tested applications</b>	<b>Suitable for:</b> Flow Cyt
<b>Species reactivity</b>	<b>Reacts with:</b> Mouse
<b>Immunogen</b>	Tissue, cells or virus corresponding to Mouse F4/80. Thioglycollate stimulated peritoneal cavity macrophages from C57/BL mice.
<b>Positive control</b>	Mouse J774 cells
<b>General notes</b>	

Clone Cl:A3-1 has been reported to modulate cytokine levels released in response to *Listeria monocytogenes*.

The Life Science industry has been in the grips of a reproducibility crisis for a number of years. Abcam is leading the way in addressing this with our range of recombinant monoclonal antibodies and knockout edited cell lines for gold-standard validation. Please check that this product meets your needs before purchasing.

If you have any questions, special requirements or concerns, please send us an inquiry and/or contact our Support team ahead of purchase. Recommended alternatives for this product can be found below, along with publications, customer reviews and Q&As

### Properties

---

<b>Form</b>	Liquid
<b>Storage instructions</b>	Shipped at 4°C. Store at +4°C.
<b>Storage buffer</b>	pH: 7.40 Preservative: 0.09% Sodium azide Constituents: 1% BSA, 5% Sucrose, PBS
<b>Purity</b>	Protein A purified
<b>Primary antibody notes</b>	Clone Cl:A3-1 has been reported to modulate cytokine levels released in response to <i>Listeria</i>

monocytogenes.

<b>Clonality</b>	Monoclonal
<b>Clone number</b>	Cl:A3-1
<b>Myeloma</b>	NS1
<b>Isotype</b>	IgG2b

## Applications

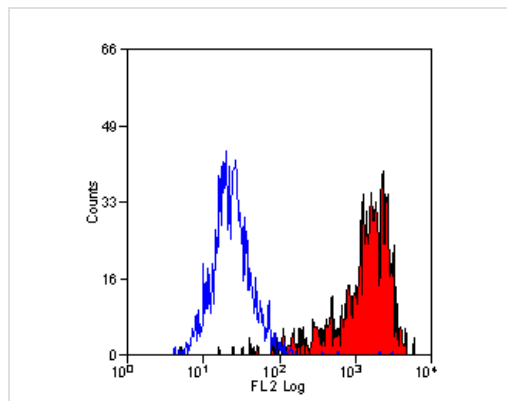
**The Abpromise guarantee** Our **Abpromise guarantee** covers the use of ab105156 in the following tested applications. The application notes include recommended starting dilutions; optimal dilutions/concentrations should be determined by the end user.

Application	Abreviews	Notes
Flow Cyt		Use 10µl for 10 <sup>6</sup> cells. in 100 µl. <b>ab136585</b> - Rat monoclonal IgG2b, is suitable for use as an isotype control with this antibody.

## Target

<b>Function</b>	Orphan receptor involved in cell adhesion and probably in cell-cell interactions specifically involving cells of the immune system. May play a role in regulatory T-cells (Treg) development.
<b>Tissue specificity</b>	Expression is restricted to eosinophils.
<b>Sequence similarities</b>	Belongs to the G-protein coupled receptor 2 family. Adhesion G-protein coupled receptor (ADGR) subfamily. Contains 6 EGF-like domains. Contains 1 GPS domain.
<b>Cellular localization</b>	Cell membrane.

## Images



Flow cytometry staining of mouse J774 cells with ab105156.

Flow Cytometry - PE Anti-F4/80 antibody [Cl:A3-1]  
(ab105156)

**Please note:** All products are "FOR RESEARCH USE ONLY. NOT FOR USE IN DIAGNOSTIC PROCEDURES"

### **Our Abpromise to you: Quality guaranteed and expert technical support**

---

- Replacement or refund for products not performing as stated on the datasheet
- Valid for 12 months from date of delivery
- Response to your inquiry within 24 hours
  
- We provide support in Chinese, English, French, German, Japanese and Spanish
- Extensive multi-media technical resources to help you
- We investigate all quality concerns to ensure our products perform to the highest standards

If the product does not perform as described on this datasheet, we will offer a refund or replacement. For full details of the Abpromise, please visit <https://www.abcam.com/abpromise> or contact our technical team.

### **Terms and conditions**

---

- Guarantee only valid for products bought direct from Abcam or one of our authorized distributors