


Product datasheet

PE Anti-FKBP52 antibody [EPR6618] ab211767

Recombinant RabMAb

[2 Images](#)

Overview

Product name	PE Anti-FKBP52 antibody [EPR6618]
Description	PE Rabbit monoclonal [EPR6618] to FKBP52
Host species	Rabbit
Conjugation	PE. Ex: 488nm, Em: 575nm
Tested applications	Suitable for: Flow Cyt (Intra)
Species reactivity	Reacts with: Human Predicted to work with: Mouse, Rat 
Immunogen	Synthetic peptide. This information is proprietary to Abcam and/or its suppliers.
Positive control	Flow Cyt (Intra): HeLa cells
General notes	Our RabMAb [®] technology is a patented hybridoma-based technology for making rabbit monoclonal antibodies. For details on our patents, please refer to RabMAb[®] patents .

Properties

Form	Liquid
Storage instructions	Shipped at 4°C. Upon delivery aliquot. Store at +4°C. Do Not Freeze. Store In the Dark.
Storage buffer	pH: 7.4 Preservative: 0.02% Sodium azide Constituents: PBS, 1% BSA
Purity	Protein A purified
Clonality	Monoclonal
Clone number	EPR6618
Isotype	IgG

Applications

The Abpromise guarantee Our [Abpromise guarantee](#) covers the use of ab211767 in the following tested applications. The application notes include recommended starting dilutions; optimal dilutions/concentrations should be determined by the end user.

Application	Abreviews	Notes
Flow Cyt (Intra)		1/1000. The cellular localisation of this product has been verified in ICC/IF.

Target

Function

Immunophilin protein with PPlase and co-chaperone activities (By similarity). Component of unliganded steroid receptors heterocomplexes through interaction with heat-shock protein 90 (HSP90). May play a role in the intracellular trafficking of heterooligomeric forms of steroid hormone receptors between cytoplasm and nuclear compartments (By similarity). The isomerase activity controls neuronal growth cones via regulation of TRPC1 channel opening. Acts also as a regulator of microtubule dynamics by inhibiting MAPT/TAU ability to promote microtubule assembly.

Tissue specificity

Widely expressed.

Sequence similarities

Contains 2 PPlase FKBP-type domains.

Contains 3 TPR repeats.

Domain

The PPlase activity is mainly due to the first PPlase FKBP-type domain (1-138 AA).

The C-terminal region (AA 375-458) is required to prevent tubulin polymerization.

The chaperone activity resides in the C-terminal region, mainly between amino acids 264 and 400.

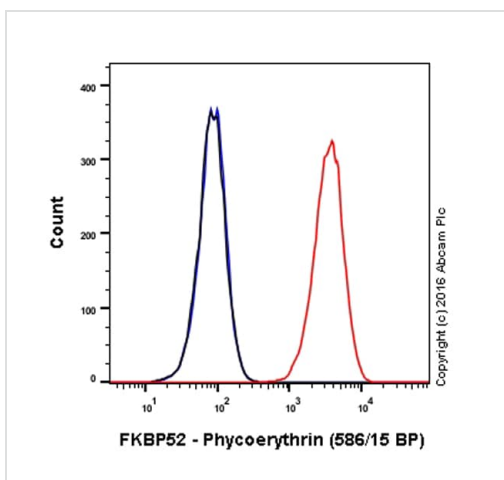
Post-translational modifications

Phosphorylation by CK2 results in loss of HSP90 binding activity (By similarity). Phosphorylated upon DNA damage, probably by ATM or ATR.

Cellular localization

Cytoplasm > cytosol. Nucleus. Cytoplasm > cytoskeleton.





Images



Overlay histogram showing HeLa cells stained with ab211767 (red line). The cells were fixed with 4% formaldehyde and then permeabilized with 90% methanol at -20°C for 15 min. The cells were then incubated in 1x PBS / 10% normal goat serum to block non-specific protein-protein interactions followed by the antibody (ab211767, 1/1000 dilution) for 30 min at 22°C. Isotype control antibody (black line) was rabbit IgG (monoclonal) Phycoerythrin ([ab209478](#)) used at the same concentration and conditions as the primary antibody. Unlabelled sample (blue line) was also used as a control. Acquisition of >5,000 events were collected using a 50mW Yellow/Green laser (561nm) and 586/15 bandpass filter.

Flow Cytometry (Intracellular) - PE Anti-FKBP52 antibody [EPR6618] (ab211767)

Why choose a recombinant antibody?

 <p>Research with confidence Consistent and reproducible results</p>	 <p>Long-term and scalable supply Recombinant technology</p>
 <p>Success from the first experiment Confirmed specificity</p>	 <p>Ethical standards compliant Animal-free production</p>

PE Anti-FKBP52 antibody [EPR6618] (ab211767)

Please note: All products are "FOR RESEARCH USE ONLY. NOT FOR USE IN DIAGNOSTIC PROCEDURES"

Our Abpromise to you: Quality guaranteed and expert technical support

- Replacement or refund for products not performing as stated on the datasheet
- Valid for 12 months from date of delivery
- Response to your inquiry within 24 hours
- We provide support in Chinese, English, French, German, Japanese and Spanish
- Extensive multi-media technical resources to help you
- We investigate all quality concerns to ensure our products perform to the highest standards

If the product does not perform as described on this datasheet, we will offer a refund or replacement. For full details of the Abpromise, please visit <https://www.abcam.com/abpromise> or contact our technical team.

Terms and conditions

- Guarantee only valid for products bought direct from Abcam or one of our authorized distributors