

## Product datasheet

### PE Anti-GNLY/Granulysin antibody [DH2] ab95829

1 Image

#### Overview

<b>Product name</b>	PE Anti-GNLY/Granulysin antibody [DH2]
<b>Description</b>	PE Mouse monoclonal [DH2] to GNLY/Granulysin
<b>Host species</b>	Mouse
<b>Conjugation</b>	PE. Ex: 488nm, Em: 575nm
<b>Tested applications</b>	<b>Suitable for:</b> Flow Cyt
<b>Species reactivity</b>	<b>Reacts with:</b> Human
<b>Immunogen</b>	Recombinant fragment corresponding to Human GNLY/Granulysin. Database link: <a href="#">P22749</a>
<b>Positive control</b>	Normal Human peripheral blood cells
<b>General notes</b>	<p>The Life Science industry has been in the grips of a reproducibility crisis for a number of years. Abcam is leading the way in addressing this with our range of recombinant monoclonal antibodies and knockout edited cell lines for gold-standard validation. Please check that this product meets your needs before purchasing.</p> <p>If you have any questions, special requirements or concerns, please send us an inquiry and/or contact our Support team ahead of purchase. Recommended alternatives for this product can be found below, along with publications, customer reviews and Q&amp;As</p>

#### Properties

<b>Form</b>	Liquid
<b>Storage instructions</b>	Shipped at 4°C. Store at +4°C.
<b>Storage buffer</b>	pH: 7.20 Preservative: 0.09% Sodium azide Constituents: BSA, PBS
<b>Purity</b>	Protein G purified
<b>Clonality</b>	Monoclonal
<b>Clone number</b>	DH2
<b>Isotype</b>	IgG1
<b>Light chain type</b>	kappa

## Applications

### The Abpromise guarantee

Our **Abpromise guarantee** covers the use of ab95829 in the following tested applications.

The application notes include recommended starting dilutions; optimal dilutions/concentrations should be determined by the end user.

Application	Abreviews	Notes
Flow Cyt		Use 5µl for 10 <sup>6</sup> cells.

## Target

### Function

Antimicrobial protein that kills intracellular pathogens. Active against a broad range of microbes, including Gram-positive and Gram-negative bacteria, fungi, and parasites. Kills Mycobacterium tuberculosis.

### Tissue specificity

Expressed in natural killer and T-cells.

### Sequence similarities

Contains 1 saposin B-type domain.

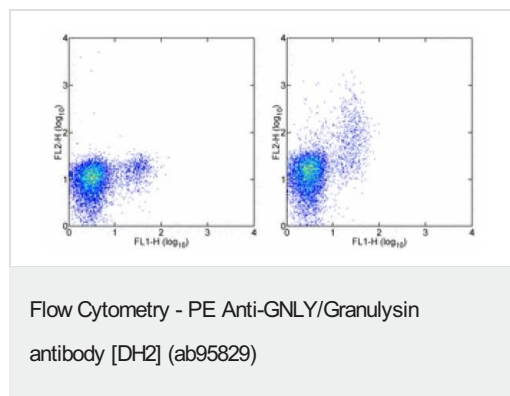
### Post-translational modifications

A 9 kDa form is produced by proteolytic processing of a 15 kDa protein.

### Cellular localization

Secreted. Located in the cytotoxic granules of T-cells, which are released upon antigen stimulation.

## Images



Staining of normal Human peripheral blood cells with Anti-Human CD56 (NCAM) FITC then fixed and permeabilized and stained with Mouse IgG1 ? Isotype Control PE (left) or ab95829 (right). Cells in the lymphocyte gate were used for analysis.

**Please note:** All products are "FOR RESEARCH USE ONLY. NOT FOR USE IN DIAGNOSTIC PROCEDURES"

## Our Abpromise to you: Quality guaranteed and expert technical support

- Replacement or refund for products not performing as stated on the datasheet
- Valid for 12 months from date of delivery
- Response to your inquiry within 24 hours
- We provide support in Chinese, English, French, German, Japanese and Spanish
- Extensive multi-media technical resources to help you

- We investigate all quality concerns to ensure our products perform to the highest standards

If the product does not perform as described on this datasheet, we will offer a refund or replacement. For full details of the Abpromise, please visit <https://www.abcam.com/abpromise> or contact our technical team.

#### **Terms and conditions**

---

- Guarantee only valid for products bought direct from Abcam or one of our authorized distributors